



Seguimiento Cuentas del GTS

Información diaria provisional (d+1)

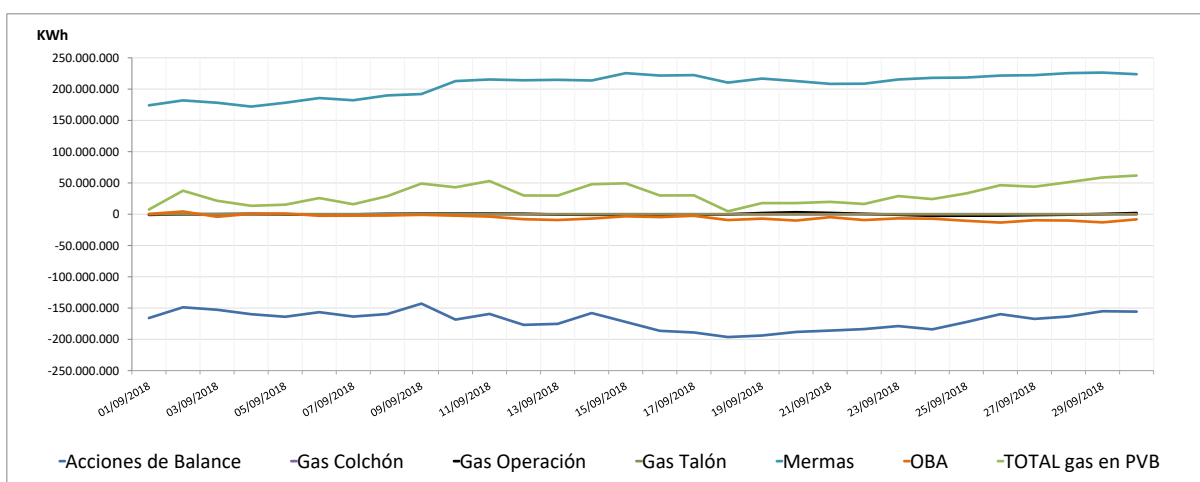
septiembre-18

02/10/2018

Seguimiento diario provisional de existencias (d+1)

Unidad:KWh							
	Acciones de Balance	Gas Colchón	Gas Operación	Gas Talón	Mermas	OBA	TOTAL gas en PVB
1-sep.	-165.913.038	0	-1.047.494	0	174.113.729	404.425	7.557.622
2-sep.	-148.748.202	0	-10.807	0	181.952.490	4.393.013	37.586.494
3-sep.	-152.714.342	0	134.333	0	178.199.830	-4.095.608	21.524.213
4-sep.	-159.807.579	0	552.006	0	172.052.362	697.354	13.494.143
5-sep.	-163.907.890	0	-148.086	0	178.220.575	1.123.891	15.288.490
6-sep.	-156.586.282	0	-939.296	0	185.711.069	-2.384.091	25.801.400
7-sep.	-163.553.992	0	-306.865	0	182.170.642	-2.319.186	15.990.599
8-sep.	-159.571.548	0	578.310	0	189.922.132	-2.069.726	28.859.168
9-sep.	-142.878.988	0	772.162	0	192.064.391	-929.963	49.027.602
10-sep.	-168.407.940	0	906.694	0	212.814.020	-2.270.480	43.042.294
11-sep.	-159.366.962	0	929.752	0	215.371.858	-3.833.001	53.101.647
12-sep.	-176.851.465	0	728.385	0	214.071.847	-7.964.625	29.984.142
13-sep.	-175.273.416	0	-533.511	0	214.836.199	-9.248.141	29.781.131
14-sep.	-157.953.512	0	-887.859	0	213.768.934	-6.959.850	47.967.713
15-sep.	-172.171.826	0	-570.588	0	225.522.432	-3.374.452	49.405.566
16-sep.	-186.369.804	0	-720.460	0	221.664.723	-4.607.253	29.967.206
17-sep.	-189.005.314	0	-635.680	0	222.365.271	-2.549.719	30.174.558
18-sep.	-196.341.086	0	-139.346	0	210.415.895	-9.311.847	4.623.616
19-sep.	-193.901.947	0	1.900.970	0	216.876.301	-7.063.944	17.811.380
20-sep.	-188.182.557	0	3.183.271	0	212.861.991	-10.053.943	17.808.762
21-sep.	-186.010.336	0	2.141.015	0	208.336.069	-4.701.243	19.765.505
22-sep.	-183.616.404	0	649.823	0	208.649.083	-9.309.610	16.372.892
23-sep.	-178.802.458	0	-897.486	0	215.349.697	-6.630.425	29.019.328
24-sep.	-184.034.453	0	-2.603.872	0	217.963.124	-7.081.936	24.242.863
25-sep.	-172.328.100	0	-2.345.138	0	218.488.132	-10.518.131	33.296.763
26-sep.	-159.734.932	0	-2.242.929	0	221.655.613	-13.315.081	46.362.671
27-sep.	-167.315.732	0	-1.367.401	0	222.284.796	-9.654.147	43.947.516
28-sep.	-163.493.803	0	-753.925	0	225.526.797	-10.063.438	51.215.631
29-sep.	-155.033.999	0	377.898	0	226.424.153	-13.009.662	58.758.390
30-sep.	-155.659.303	0	1.923.421	0	223.819.877	-8.211.782	61.872.213

Evolución existencias cuentas GTS en PVB



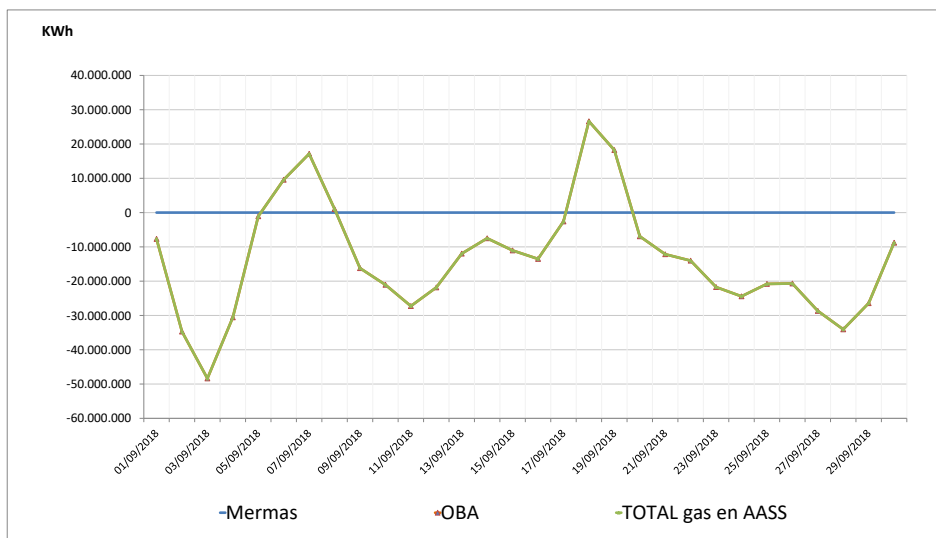
Observaciones:

Cuentas GTS en AASS: Septiembre 2018

Seguimiento diario provisional de existencias (d+1)

Unidad:KWh	Mermas	OBA	TOTAL gas en AASS
1-sep.	0	-7.670.215	-7.670.215
2-sep.	0	-34.702.703	-34.702.703
3-sep.	0	-48.376.320	-48.376.320
4-sep.	0	-30.566.740	-30.566.740
5-sep.	0	-1.074.136	-1.074.136
6-sep.	0	9.576.007	9.576.007
7-sep.	0	17.132.901	17.132.901
8-sep.	0	1.053.774	1.053.774
9-sep.	0	-16.201.802	-16.201.802
10-sep.	0	-21.055.043	-21.055.043
11-sep.	0	-27.258.113	-27.258.113
12-sep.	0	-21.827.320	-21.827.320
13-sep.	0	-11.963.835	-11.963.835
14-sep.	0	-7.497.286	-7.497.286
15-sep.	0	-11.040.991	-11.040.991
16-sep.	0	-13.504.309	-13.504.309
17-sep.	0	-2.590.017	-2.590.017
18-sep.	0	26.626.730	26.626.730
19-sep.	0	18.241.296	18.241.296
20-sep.	0	-6.919.119	-6.919.119
21-sep.	0	-12.143.539	-12.143.539
22-sep.	0	-14.026.354	-14.026.354
23-sep.	0	-21.720.944	-21.720.944
24-sep.	0	-24.424.771	-24.424.771
25-sep.	0	-20.795.232	-20.795.232
26-sep.	0	-20.678.013	-20.678.013
27-sep.	0	-28.681.585	-28.681.585
28-sep.	0	-34.066.451	-34.066.451
29-sep.	0	-26.417.188	-26.417.188
30-sep.	0	-8.784.595	-8.784.595

Evolución existencias cuentas GTS en AASS



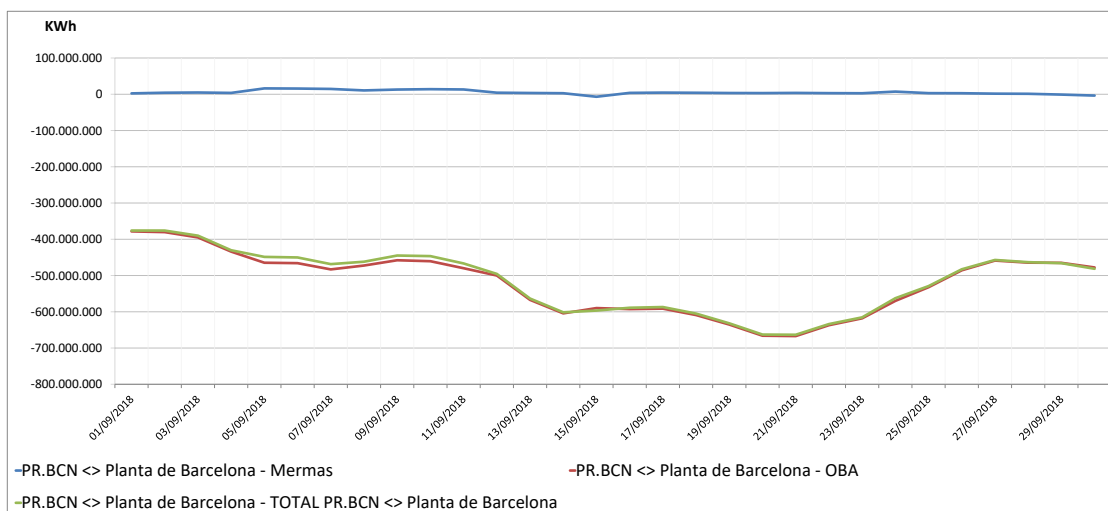
Observaciones :

Cuentas GTS en PR Barcelona: Septiembre 2018

Seguimiento diario provisional de existencias (d+1)

Unidad: KWh			
	Mermas	OBA	TOTAL PR.BCN <> Planta de Barcelona
1-sep.	2.363.107	-378.249.260	-375.886.153
2-sep.	4.205.914	-380.229.049	-376.023.135
3-sep.	4.829.914	-394.906.262	-390.076.348
4-sep.	3.746.451	-434.040.173	-430.293.722
5-sep.	16.156.597	-464.794.232	-448.637.635
6-sep.	15.730.866	-465.933.605	-450.202.739
7-sep.	14.619.990	-483.153.143	-468.533.153
8-sep.	10.551.367	-472.475.226	-461.923.859
9-sep.	12.992.058	-457.910.561	-444.918.503
10-sep.	14.052.743	-460.534.433	-446.481.690
11-sep.	13.201.791	-479.894.418	-466.692.627
12-sep.	4.340.557	-499.943.070	-495.602.513
13-sep.	3.548.586	-567.140.766	-563.592.180
14-sep.	2.811.494	-604.362.641	-601.551.147
15-sep.	-6.896.402	-589.798.715	-596.695.117
16-sep.	3.796.813	-592.664.241	-588.867.428
17-sep.	4.473.354	-591.397.671	-586.924.317
18-sep.	4.051.252	-609.066.003	-605.014.751
19-sep.	3.400.910	-635.256.414	-631.855.504
20-sep.	3.147.034	-666.028.968	-662.881.934
21-sep.	3.713.191	-667.050.182	-663.336.991
22-sep.	3.079.323	-636.986.088	-633.906.765
23-sep.	2.712.384	-618.058.821	-615.346.437
24-sep.	7.325.980	-569.992.276	-562.666.296
25-sep.	3.067.017	-532.306.120	-529.239.103
26-sep.	2.785.523	-485.616.750	-482.831.227
27-sep.	1.671.839	-458.765.565	-457.093.726
28-sep.	1.281.451	-464.487.816	-463.206.365
29-sep.	-870.960	-465.035.011	-465.905.971
30-sep.	-3.660.137	-477.746.660	-481.406.797

Evolución existencias cuentas GTS en PR Barcelona



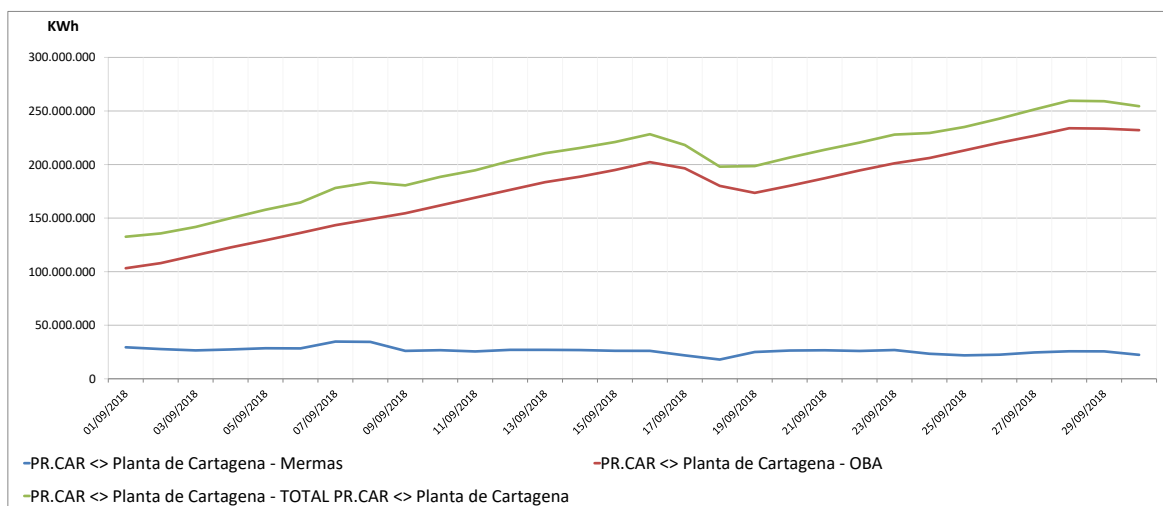
Observaciones:

Cuentas GTS en PR Cartagena: Septiembre 2018

Seguimiento diario provisional de existencias (d+1)

Unidad: KWh			
	Mermas	OBA	TOTAL PR.CAR <> Planta de Cartagena
1-sep.	29.397.015	103.211.234	132.608.249
2-sep.	27.741.368	107.949.446	135.690.814
3-sep.	26.483.681	115.288.679	141.772.360
4-sep.	27.338.017	122.603.101	149.941.118
5-sep.	28.525.256	129.284.662	157.809.918
6-sep.	28.353.390	136.204.244	164.557.634
7-sep.	34.719.618	143.396.822	178.116.440
8-sep.	34.423.205	148.955.178	183.378.383
9-sep.	26.039.039	154.508.206	180.547.245
10-sep.	26.682.419	161.812.838	188.495.257
11-sep.	25.520.322	169.112.403	194.632.725
12-sep.	27.031.283	176.317.284	203.348.567
13-sep.	27.016.591	183.543.063	210.559.654
14-sep.	26.802.520	188.675.036	215.477.556
15-sep.	26.113.752	194.901.972	221.015.724
16-sep.	26.056.463	202.224.157	228.280.620
17-sep.	21.831.110	196.433.873	218.264.983
18-sep.	17.937.511	180.076.504	198.014.015
19-sep.	24.995.234	173.554.460	198.549.694
20-sep.	26.368.062	180.152.375	206.520.437
21-sep.	26.594.661	187.185.410	213.780.071
22-sep.	25.983.168	194.507.101	220.490.269
23-sep.	26.837.492	201.119.599	227.957.091
24-sep.	23.333.942	206.103.017	229.436.959
25-sep.	21.852.816	213.181.784	235.034.600
26-sep.	22.464.936	220.354.375	242.819.311
27-sep.	24.580.869	226.796.381	251.377.250
28-sep.	25.669.662	233.872.742	259.542.404
29-sep.	25.585.111	233.516.776	259.101.887
30-sep.	22.347.945	232.077.858	254.425.803

Evolución existencias cuentas GTS en PR Cartagena



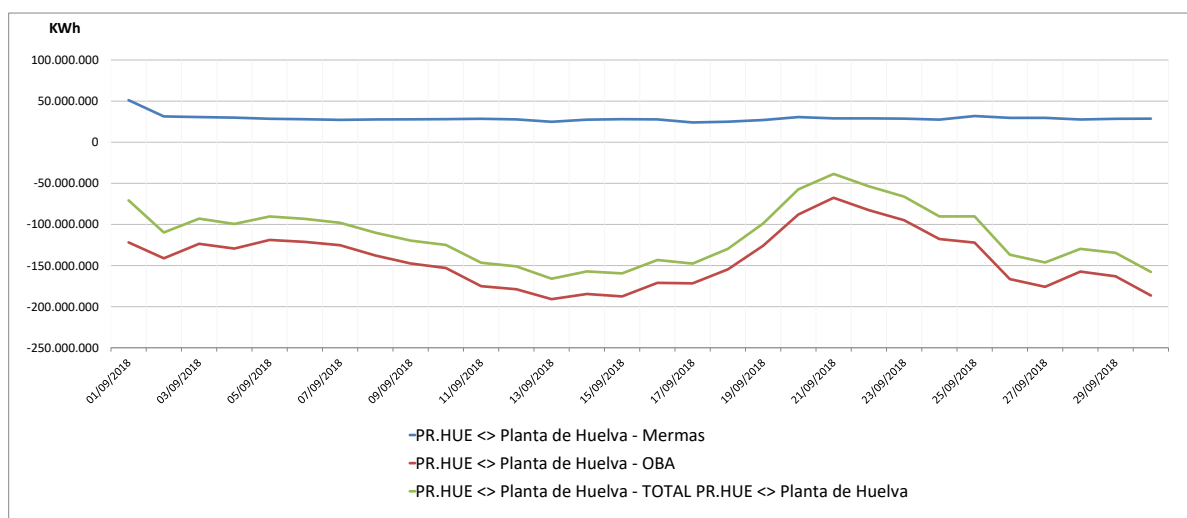
Observaciones:

Cuentas GTS en PR Huelva: Septiembre 2018

Seguimiento diario provisional de existencias (d+1)

Unidad: KWh			
	Mermas	OBA	TOTAL PR.HUE <> Planta de Huelva
1-sep.	51.169.187	-121.858.623	-70.689.436
2-sep.	31.376.524	-141.158.175	-109.781.651
3-sep.	30.620.985	-123.555.378	-92.934.393
4-sep.	29.922.452	-129.332.610	-99.410.158
5-sep.	28.539.996	-118.861.606	-90.321.610
6-sep.	27.986.256	-121.241.422	-93.255.166
7-sep.	27.218.059	-125.230.088	-98.012.029
8-sep.	27.738.695	-137.778.534	-110.039.839
9-sep.	27.824.307	-147.490.130	-119.665.823
10-sep.	28.084.713	-153.009.287	-124.924.574
11-sep.	28.524.758	-175.093.277	-146.568.519
12-sep.	27.799.438	-178.827.005	-151.027.567
13-sep.	24.895.669	-190.900.690	-166.005.021
14-sep.	27.447.324	-184.597.127	-157.149.803
15-sep.	28.045.890	-187.556.234	-159.510.344
16-sep.	27.810.920	-171.073.680	-143.262.760
17-sep.	24.053.547	-171.650.078	-147.596.531
18-sep.	24.962.739	-154.658.476	-129.695.737
19-sep.	27.022.243	-125.918.829	-98.896.586
20-sep.	30.594.844	-87.881.888	-57.287.044
21-sep.	29.009.731	-67.579.158	-38.569.427
22-sep.	29.002.258	-82.615.939	-53.613.681
23-sep.	28.709.344	-94.856.619	-66.147.275
24-sep.	27.503.481	-117.759.311	-90.255.830
25-sep.	31.896.972	-122.104.594	-90.207.622
26-sep.	29.642.354	-166.483.833	-136.841.479
27-sep.	29.613.389	-175.865.481	-146.252.092
28-sep.	27.661.814	-157.348.641	-129.686.827
29-sep.	28.516.569	-163.124.129	-134.607.560
30-sep.	28.682.616	-186.434.298	-157.751.682

Evolución existencias cuentas GTS en PR Huelva



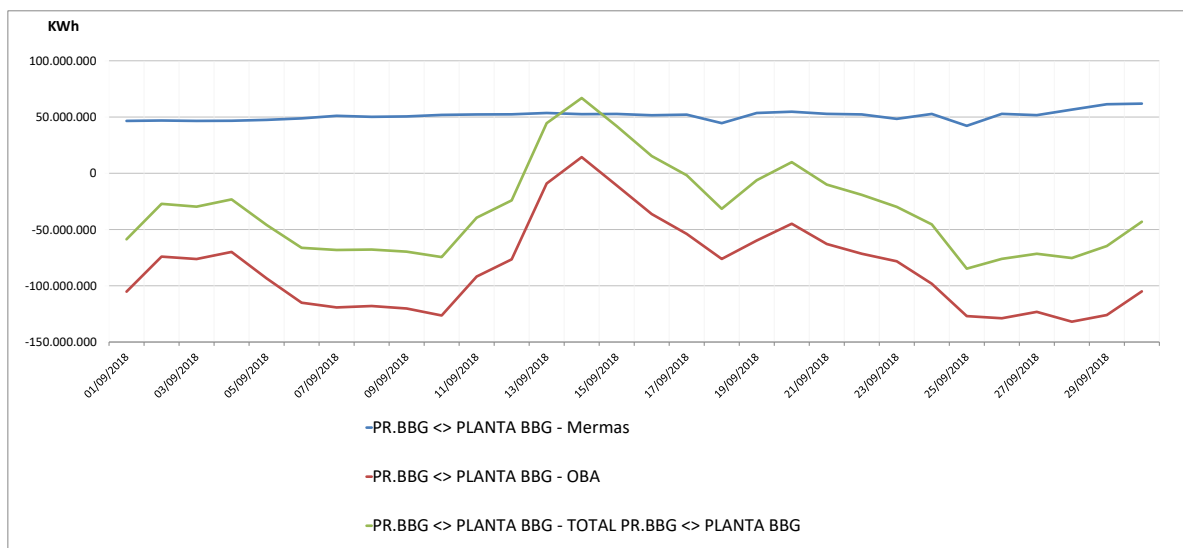
Observaciones:

Cuentas GTS en PR Bilbao: Septiembre 2018

Seguimiento diario provisional de existencias (d+1)

Unidad: KWh			
	Mermas	OBA	TOTAL PR.BBG <> PLANTA BBG
1-sep.	46.539.401	-105.208.851	-58.669.450
2-sep.	46.916.631	-74.084.375	-27.167.744
3-sep.	46.542.160	-76.204.395	-29.662.235
4-sep.	46.686.880	-69.888.725	-23.201.845
5-sep.	47.480.634	-93.406.104	-45.925.470
6-sep.	48.800.066	-115.050.341	-66.250.275
7-sep.	51.068.816	-119.224.823	-68.156.007
8-sep.	50.192.956	-117.990.527	-67.797.571
9-sep.	50.518.161	-120.189.254	-69.671.093
10-sep.	51.901.049	-126.396.024	-74.494.975
11-sep.	52.306.554	-91.779.720	-39.473.166
12-sep.	52.417.283	-76.516.346	-24.099.063
13-sep.	53.605.777	-9.082.314	44.523.463
14-sep.	52.553.999	14.347.399	66.901.398
15-sep.	52.753.205	-10.817.443	41.935.762
16-sep.	51.584.825	-36.240.191	15.344.634
17-sep.	52.134.236	-53.898.216	-1.763.980
18-sep.	44.550.388	-76.129.996	-31.579.608
19-sep.	53.608.465	-59.770.140	-6.161.675
20-sep.	54.741.095	-44.839.887	9.901.208
21-sep.	52.795.605	-62.836.621	-10.041.016
22-sep.	52.333.885	-71.509.493	-19.175.608
23-sep.	48.353.583	-78.224.200	-29.870.617
24-sep.	52.750.922	-98.172.252	-45.421.330
25-sep.	42.192.198	-126.955.980	-84.763.782
26-sep.	52.808.980	-128.878.713	-76.069.733
27-sep.	51.657.537	-123.202.937	-71.545.400
28-sep.	56.581.187	-131.914.211	-75.333.024
29-sep.	61.362.383	-126.017.024	-64.654.641
30-sep.	61.919.053	-104.978.427	-43.059.374

Evolución existencias cuentas GTS en PR Bilbao

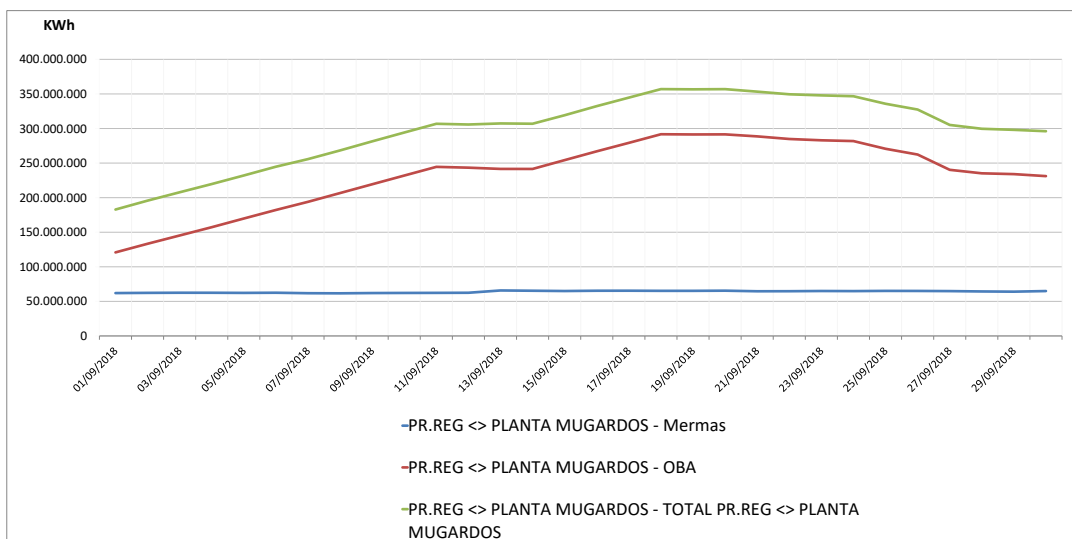


Observaciones:

Seguimiento diario provisional de existencias (d+1)

Unidad: KWh			
	Mermas	OBA	TOTAL PR.REG <> PLANTA MUGARDOS
1-sep.	61.990.394	120.808.511	182.798.905
2-sep.	62.337.554	133.315.119	195.652.673
3-sep.	62.516.430	145.246.239	207.762.669
4-sep.	62.444.380	157.271.055	219.715.435
5-sep.	62.280.361	169.784.575	232.064.936
6-sep.	62.511.237	182.225.519	244.736.756
7-sep.	61.825.581	193.940.703	255.766.284
8-sep.	61.649.154	206.665.167	268.314.321
9-sep.	62.033.110	219.342.015	281.375.125
10-sep.	62.184.063	231.978.031	294.162.094
11-sep.	62.324.033	244.489.887	306.813.920
12-sep.	62.466.113	243.345.551	305.811.664
13-sep.	65.789.479	241.525.375	307.314.854
14-sep.	65.385.175	241.505.263	306.890.438
15-sep.	64.957.202	254.270.815	319.228.017
16-sep.	65.382.592	266.980.559	332.363.151
17-sep.	65.422.302	279.240.639	344.662.941
18-sep.	65.242.779	291.708.207	356.950.986
19-sep.	65.256.839	291.403.295	356.660.134
20-sep.	65.454.193	291.486.479	356.940.672
21-sep.	64.648.903	288.633.215	353.282.118
22-sep.	64.664.833	284.824.559	349.489.392
23-sep.	65.007.347	282.927.327	347.934.674
24-sep.	64.850.615	281.812.687	346.663.302
25-sep.	65.163.533	270.641.087	335.804.620
26-sep.	65.106.425	262.305.711	327.412.136
27-sep.	64.874.634	240.269.727	305.144.361
28-sep.	64.377.946	235.224.207	299.602.153
29-sep.	64.019.255	234.037.631	298.056.886
30-sep.	64.930.258	231.139.183	296.069.441

Evolución existencias cuentas GTS en PR Mugaridos



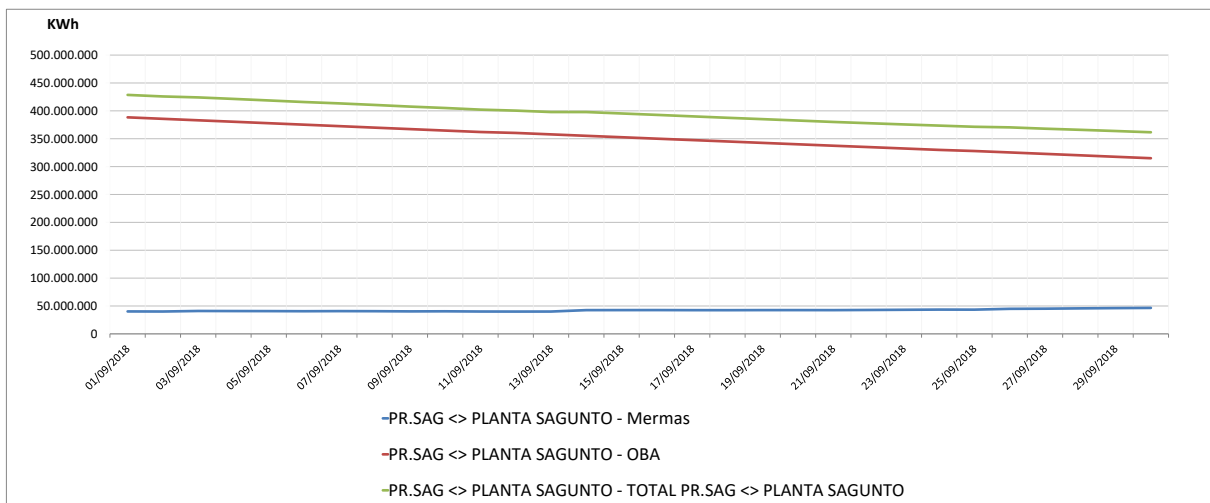
Observaciones:

Cuentas GTS en PR Sagunto: Septiembre 2018

Seguimiento diario provisional de existencias (d+1)

Unidad: KWh			
	Mermas	OBA	TOTAL PR.SAG <> PLANTA SAGUNTO
1-sep.	40.247.537	388.354.756	428.602.293
2-sep.	40.128.013	385.705.668	425.833.681
3-sep.	41.041.120	383.068.420	424.109.540
4-sep.	40.940.021	380.452.036	421.392.057
5-sep.	40.798.610	377.820.868	418.619.478
6-sep.	40.633.310	375.204.612	415.837.922
7-sep.	40.782.273	372.564.100	413.346.373
8-sep.	40.708.667	369.919.044	410.627.711
9-sep.	40.341.287	367.268.292	407.609.579
10-sep.	40.448.618	364.635.012	405.083.630
11-sep.	40.136.245	362.053.008	402.189.253
12-sep.	40.014.202	360.393.424	400.407.626
13-sep.	40.078.494	357.777.104	397.855.598
14-sep.	42.570.661	355.237.584	397.808.245
15-sep.	42.633.288	352.668.048	395.301.336
16-sep.	42.668.144	350.107.408	392.775.552
17-sep.	42.513.347	347.578.512	390.091.859
18-sep.	42.469.715	345.049.360	387.519.075
19-sep.	42.616.110	342.522.000	385.138.110
20-sep.	42.607.279	340.010.320	382.617.599
21-sep.	42.591.918	337.495.824	380.087.742
22-sep.	42.843.792	334.981.264	377.825.056
23-sep.	43.191.566	332.471.440	375.663.006
24-sep.	43.546.141	329.962.512	373.508.653
25-sep.	43.434.362	327.949.776	371.384.138
26-sep.	44.952.364	325.417.680	370.370.044
27-sep.	45.136.195	322.833.552	367.969.747
28-sep.	45.713.340	320.226.704	365.940.044
29-sep.	46.199.902	317.625.168	363.825.070
30-sep.	46.561.599	315.008.848	361.570.447

Evolución existencias cuentas GTS en PR Sagunto



Observaciones: