



Seguimiento Cuentas del GTS

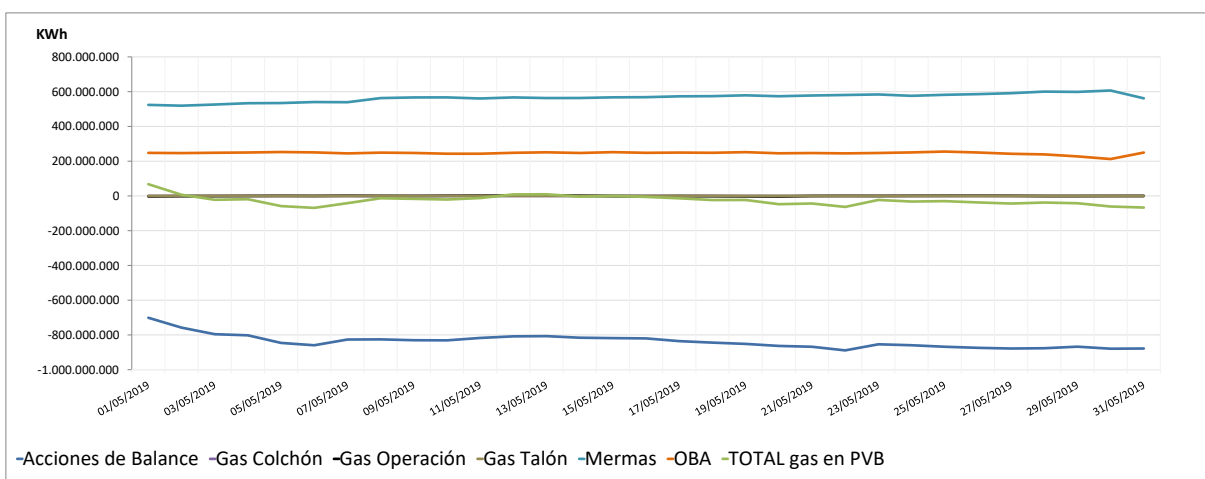
Información diaria provisional (d+1)

mayo-19

Seguimiento diario provisional de existencias (d+1)

| Unidad:KWh | Acciones de Balance | Gas Colchón | Gas Operación | Gas Talón | Mermas | OBA | TOTAL gas en PVB |
|------------|---------------------|-------------|---------------|-----------|-------------|-------------|------------------|
| 1-may.-19 | -701.134.910 | 0 | -2.916.968 | 0 | 523.928.888 | 247.751.993 | 67.629.003 |
| 2-may.-19 | -757.790.730 | 0 | -1.337.897 | 0 | 519.328.427 | 246.607.543 | 6.807.343 |
| 3-may.-19 | -795.646.873 | 0 | -934.431 | 0 | 525.952.917 | 248.397.125 | -22.231.262 |
| 4-may.-19 | -802.120.575 | 0 | -362.482 | 0 | 533.509.345 | 249.873.045 | -19.100.667 |
| 5-may.-19 | -845.918.615 | 0 | 263.145 | 0 | 534.474.341 | 252.627.077 | -58.554.052 |
| 6-may.-19 | -859.400.102 | 0 | -225.120 | 0 | 540.291.434 | 250.559.239 | -68.774.549 |
| 7-may.-19 | -826.350.695 | 0 | 968.812 | 0 | 539.200.457 | 244.727.340 | -41.454.086 |
| 8-may.-19 | -825.400.833 | 0 | -29.637 | 0 | 562.901.180 | 249.027.867 | -13.501.423 |
| 9-may.-19 | -830.421.092 | 0 | -455.066 | 0 | 566.648.130 | 247.306.273 | -16.921.755 |
| 10-may.-19 | -831.084.016 | 0 | 629.504 | 0 | 566.940.144 | 242.829.185 | -20.685.183 |
| 11-may.-19 | -817.399.283 | 0 | 1.452.793 | 0 | 560.778.354 | 242.867.677 | -12.300.459 |
| 12-may.-19 | -808.149.622 | 0 | 1.960.460 | 0 | 566.841.330 | 248.168.242 | 8.820.410 |
| 13-may.-19 | -806.924.764 | 0 | 2.327.136 | 0 | 563.235.259 | 250.936.174 | 9.573.805 |
| 14-may.-19 | -815.958.244 | 0 | 1.102.916 | 0 | 563.476.495 | 247.005.910 | -4.372.923 |
| 15-may.-19 | -818.334.524 | 0 | -807.676 | 0 | 567.358.087 | 251.878.627 | 94.514 |
| 16-may.-19 | -819.938.997 | 0 | -1.989.806 | 0 | 568.347.737 | 248.040.378 | -5.540.688 |
| 17-may.-19 | -835.569.126 | 0 | -769.905 | 0 | 573.158.659 | 249.393.673 | -13.786.699 |
| 18-may.-19 | -844.201.898 | 0 | -1.593.370 | 0 | 574.016.615 | 248.123.409 | -23.655.244 |
| 19-may.-19 | -851.545.452 | 0 | -2.550.140 | 0 | 578.987.583 | 251.884.958 | -23.223.051 |
| 20-may.-19 | -863.127.992 | 0 | -3.332.868 | 0 | 573.594.603 | 245.321.743 | -47.544.514 |
| 21-may.-19 | -867.980.411 | 0 | -395.084 | 0 | 577.843.161 | 246.879.642 | -43.652.692 |
| 22-may.-19 | -888.805.657 | 0 | 32.556 | 0 | 580.756.309 | 244.825.733 | -63.191.059 |
| 23-may.-19 | -853.830.899 | 0 | -338.786 | 0 | 583.944.915 | 247.094.284 | -23.130.486 |
| 24-may.-19 | -859.080.308 | 0 | 199.840 | 0 | 576.047.881 | 250.451.416 | -32.381.171 |
| 25-may.-19 | -868.037.154 | 0 | 592.391 | 0 | 582.030.341 | 255.285.614 | -30.128.808 |
| 26-may.-19 | -873.995.396 | 0 | 887.962 | 0 | 585.801.543 | 249.762.057 | -37.543.834 |
| 27-may.-19 | -878.166.953 | 0 | 539.120 | 0 | 591.152.199 | 242.473.860 | -44.001.774 |
| 28-may.-19 | -876.499.436 | 0 | -814.062 | 0 | 600.404.567 | 238.900.624 | -38.008.307 |
| 29-may.-19 | -867.460.598 | 0 | -840.272 | 0 | 598.772.776 | 227.498.283 | -42.029.811 |
| 30-may.-19 | -879.215.373 | 0 | -517.455 | 0 | 606.644.341 | 212.267.712 | -60.820.775 |
| 31-may.-19 | -878.047.330 | 0 | -196.130 | 0 | 561.616.160 | 249.632.686 | -66.994.614 |

Evolución existencias cuentas GTS en PVB



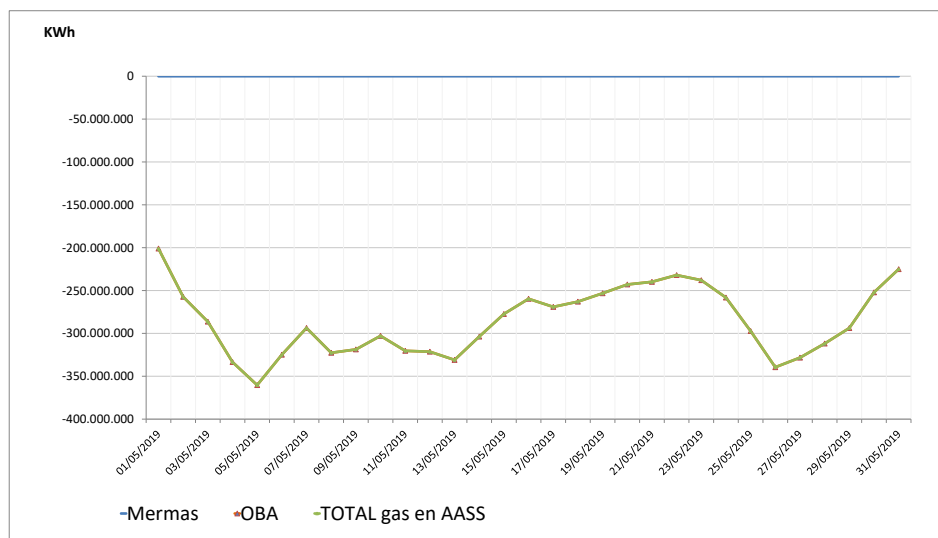
Observaciones:

Cuentas GTS en AASS: Mayo 2019

Seguimiento diario provisional de existencias (d+1)

| Unidad:KWh | Mermas | OBA | TOTAL gas en AASS |
|------------|--------|--------------|-------------------|
| 1-may. | 0 | -201.030.648 | -201.030.648 |
| 2-may. | 0 | -257.307.159 | -257.307.159 |
| 3-may. | 0 | -286.323.504 | -286.323.504 |
| 4-may. | 0 | -333.425.509 | -333.425.509 |
| 5-may. | 0 | -360.313.084 | -360.313.084 |
| 6-may. | 0 | -324.854.968 | -324.854.968 |
| 7-may. | 0 | -293.659.989 | -293.659.989 |
| 8-may. | 0 | -322.606.919 | -322.606.919 |
| 9-may. | 0 | -318.691.054 | -318.691.054 |
| 10-may. | 0 | -302.910.260 | -302.910.260 |
| 11-may. | 0 | -320.347.853 | -320.347.853 |
| 12-may. | 0 | -321.340.921 | -321.340.921 |
| 13-may. | 0 | -330.941.447 | -330.941.447 |
| 14-may. | 0 | -303.743.434 | -303.743.434 |
| 15-may. | 0 | -277.369.978 | -277.369.978 |
| 16-may. | 0 | -259.676.009 | -259.676.009 |
| 17-may. | 0 | -269.068.363 | -269.068.363 |
| 18-may. | 0 | -262.974.283 | -262.974.283 |
| 19-may. | 0 | -253.194.327 | -253.194.327 |
| 20-may. | 0 | -242.938.137 | -242.938.137 |
| 21-may. | 0 | -239.855.525 | -239.855.525 |
| 22-may. | 0 | -232.005.549 | -232.005.549 |
| 23-may. | 0 | -237.940.015 | -237.940.015 |
| 24-may. | 0 | -258.221.319 | -258.221.319 |
| 25-may. | 0 | -297.249.526 | -297.249.526 |
| 26-may. | 0 | -339.453.707 | -339.453.707 |
| 27-may. | 0 | -328.276.239 | -328.276.239 |
| 28-may. | 0 | -311.844.605 | -311.844.605 |
| 29-may. | 0 | -293.796.624 | -293.796.624 |
| 30-may. | 0 | -252.140.198 | -252.140.198 |
| 31-may. | 0 | -225.070.805 | -225.070.805 |

Evolución existencias cuentas GTS en AASS



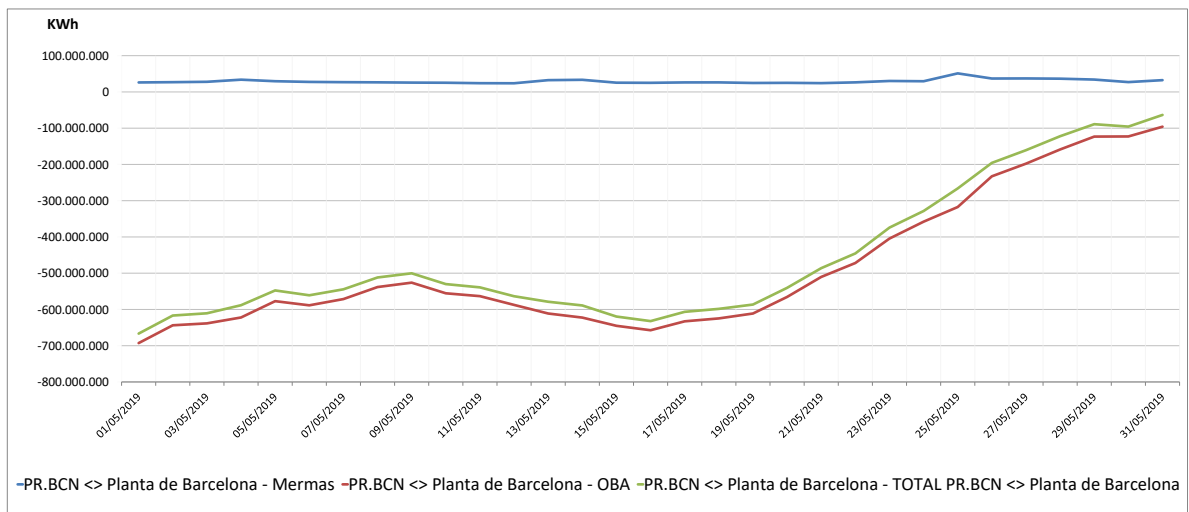
Observaciones :

Cuentas GTS en PR Barcelona: Mayo 2019

Seguimiento diario provisional de existencias (d+1)

| Unidad: KWh | Mermas | OBA | TOTAL PR.BCN <> Planta de Barcelona |
|-------------|------------|--------------|-------------------------------------|
| 1-may. | 26.170.461 | -692.767.210 | -666.596.749 |
| 2-may. | 26.937.835 | -643.728.866 | -616.791.031 |
| 3-may. | 27.872.002 | -638.438.348 | -610.566.346 |
| 4-may. | 33.781.832 | -622.137.514 | -588.355.682 |
| 5-may. | 29.607.384 | -577.179.522 | -547.572.138 |
| 6-may. | 27.618.699 | -588.604.996 | -560.986.297 |
| 7-may. | 26.938.704 | -571.439.771 | -544.501.067 |
| 8-may. | 26.469.314 | -538.243.303 | -511.773.989 |
| 9-may. | 25.730.813 | -526.098.590 | -500.367.777 |
| 10-may. | 25.339.696 | -555.433.102 | -530.093.406 |
| 11-may. | 24.132.077 | -563.260.247 | -539.128.170 |
| 12-may. | 23.848.158 | -587.433.012 | -563.584.854 |
| 13-may. | 32.493.383 | -611.190.364 | -578.696.981 |
| 14-may. | 33.424.630 | -622.432.417 | -589.007.787 |
| 15-may. | 25.518.964 | -645.089.611 | -619.570.647 |
| 16-may. | 25.116.102 | -657.281.742 | -632.165.640 |
| 17-may. | 26.223.342 | -632.796.533 | -606.573.191 |
| 18-may. | 26.314.952 | -624.745.138 | -598.430.186 |
| 19-may. | 24.709.945 | -611.180.655 | -586.470.710 |
| 20-may. | 25.100.619 | -565.475.161 | -540.374.542 |
| 21-may. | 24.243.537 | -510.353.416 | -486.109.879 |
| 22-may. | 26.410.992 | -471.908.956 | -445.497.964 |
| 23-may. | 30.151.922 | -404.424.582 | -374.272.660 |
| 24-may. | 29.473.586 | -357.949.847 | -328.476.261 |
| 25-may. | 51.167.626 | -317.383.393 | -266.215.767 |
| 26-may. | 37.011.853 | -232.764.893 | -195.753.040 |
| 27-may. | 37.197.552 | -197.843.620 | -160.646.068 |
| 28-may. | 36.537.286 | -158.752.748 | -122.215.462 |
| 29-may. | 34.107.448 | -123.144.651 | -89.037.203 |
| 30-may. | 27.097.010 | -122.831.878 | -95.734.868 |
| 31-may. | 32.474.804 | -95.902.505 | -63.427.701 |

Evolución existencias cuentas GTS en PR Barcelona



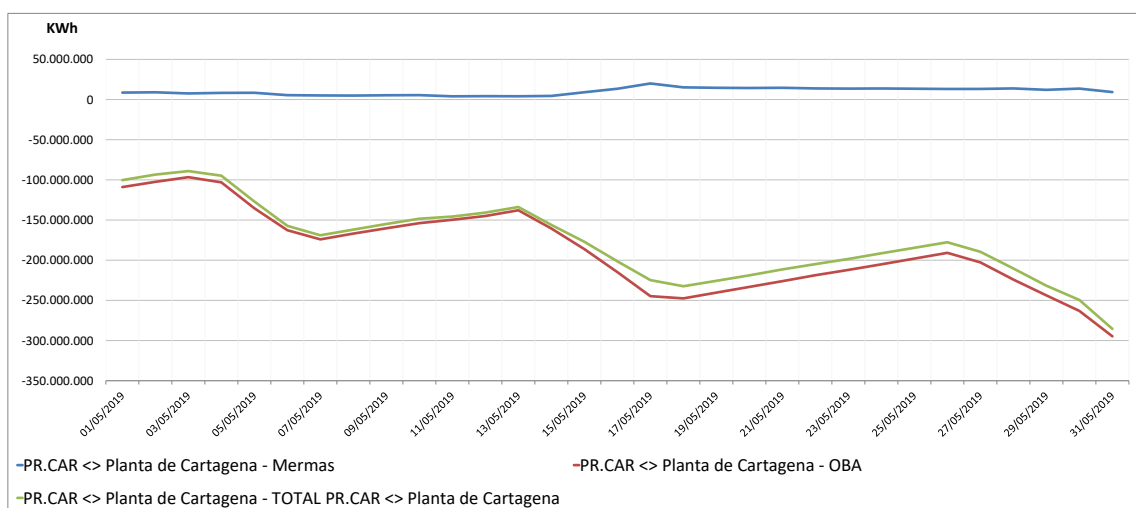
Observaciones:

Cuentas GTS en PR Cartagena: Mayo 2019

Seguimiento diario provisional de existencias (d+1)

| Unidad: KWh | | | |
|-------------|------------|--------------|-------------------------------------|
| | Mermas | OBA | TOTAL PR.CAR <> Planta de Cartagena |
| 1-may. | 8.661.712 | -108.962.952 | -100.301.240 |
| 2-may. | 9.008.491 | -102.430.325 | -93.421.834 |
| 3-may. | 7.568.066 | -96.608.482 | -89.040.416 |
| 4-may. | 8.278.329 | -103.080.045 | -94.801.716 |
| 5-may. | 8.415.545 | -135.325.646 | -126.910.101 |
| 6-may. | 5.450.111 | -162.659.814 | -157.209.703 |
| 7-may. | 5.100.078 | -174.036.927 | -168.936.849 |
| 8-may. | 4.943.029 | -166.842.476 | -161.899.447 |
| 9-may. | 5.329.508 | -160.237.646 | -154.908.138 |
| 10-may. | 5.509.078 | -153.855.254 | -148.346.176 |
| 11-may. | 4.010.021 | -149.651.796 | -145.641.775 |
| 12-may. | 4.239.455 | -144.974.983 | -140.735.528 |
| 13-may. | 4.065.116 | -137.831.247 | -133.766.131 |
| 14-may. | 4.498.809 | -160.529.840 | -156.031.031 |
| 15-may. | 9.109.030 | -186.196.221 | -177.087.191 |
| 16-may. | 13.428.591 | -214.831.086 | -201.402.495 |
| 17-may. | 20.000.977 | -244.746.912 | -224.745.935 |
| 18-may. | 15.141.563 | -247.509.894 | -232.368.331 |
| 19-may. | 14.638.290 | -240.296.943 | -225.658.653 |
| 20-may. | 14.360.802 | -233.207.521 | -218.846.719 |
| 21-may. | 14.632.077 | -226.069.367 | -211.437.290 |
| 22-may. | 13.832.428 | -218.672.372 | -204.839.944 |
| 23-may. | 13.597.110 | -212.046.660 | -198.449.550 |
| 24-may. | 13.763.931 | -205.135.669 | -191.371.738 |
| 25-may. | 13.457.094 | -197.986.986 | -184.529.892 |
| 26-may. | 13.175.821 | -190.809.365 | -177.633.544 |
| 27-may. | 13.185.659 | -202.712.113 | -189.526.454 |
| 28-may. | 13.840.392 | -224.113.156 | -210.272.764 |
| 29-may. | 12.081.487 | -243.776.211 | -231.694.724 |
| 30-may. | 13.624.336 | -263.153.875 | -249.529.539 |
| 31-may. | 9.286.862 | -294.745.619 | -285.458.757 |

Evolución existencias cuentas GTS en PR Cartagena



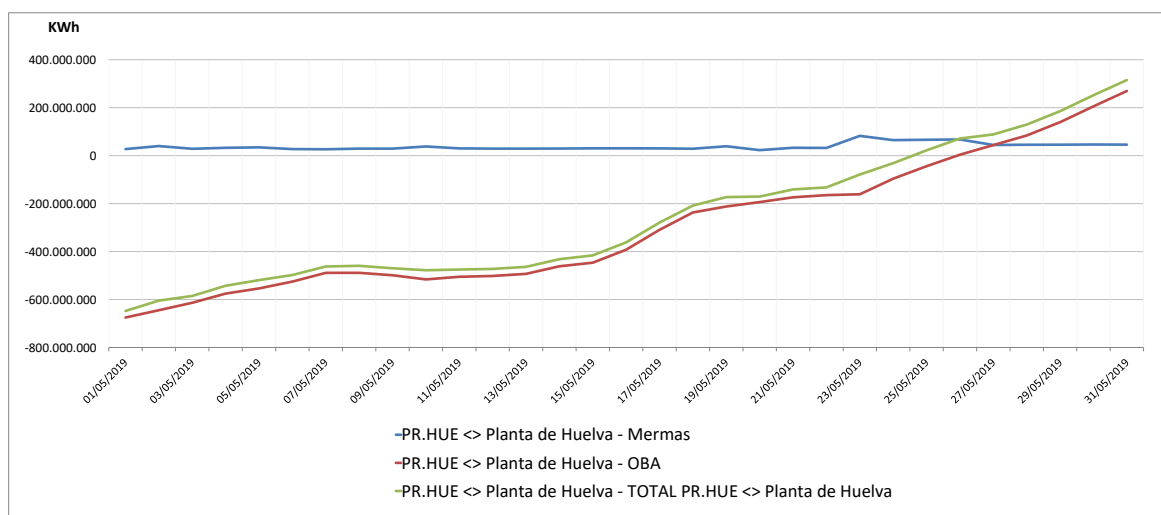
Observaciones:

Cuentas GTS en PR Huelva: Mayo 2019

Seguimiento diario provisional de existencias (d+1)

| Unidad: KWh | | | |
|-------------|------------|--------------|----------------------------------|
| | Mermas | OBA | TOTAL PR.HUE <> Planta de Huelva |
| 1-may. | 27.371.239 | -675.127.015 | -647.755.776 |
| 2-may. | 40.068.157 | -644.648.939 | -604.580.782 |
| 3-may. | 28.564.274 | -613.624.675 | -585.060.401 |
| 4-may. | 32.671.432 | -575.291.495 | -542.620.063 |
| 5-may. | 34.566.006 | -553.688.788 | -519.122.782 |
| 6-may. | 27.422.659 | -525.239.867 | -497.817.208 |
| 7-may. | 26.606.361 | -488.803.538 | -462.197.177 |
| 8-may. | 29.277.141 | -488.707.015 | -459.429.874 |
| 9-may. | 29.271.219 | -498.838.698 | -469.567.479 |
| 10-may. | 38.327.770 | -516.243.764 | -477.915.994 |
| 11-may. | 30.311.443 | -505.288.772 | -474.977.329 |
| 12-may. | 29.277.617 | -501.702.061 | -472.424.444 |
| 13-may. | 29.202.802 | -492.987.247 | -463.784.445 |
| 14-may. | 29.658.553 | -461.511.754 | -431.853.201 |
| 15-may. | 30.470.557 | -446.367.085 | -415.896.528 |
| 16-may. | 30.600.328 | -392.117.056 | -361.516.728 |
| 17-may. | 30.260.027 | -309.307.590 | -279.047.563 |
| 18-may. | 28.868.955 | -236.970.149 | -208.101.194 |
| 19-may. | 39.111.582 | -211.985.366 | -172.873.784 |
| 20-may. | 23.036.625 | -193.613.742 | -170.577.117 |
| 21-may. | 32.832.115 | -173.774.652 | -140.942.537 |
| 22-may. | 32.122.418 | -164.565.404 | -132.442.986 |
| 23-may. | 82.503.844 | -161.119.490 | -78.615.646 |
| 24-may. | 64.738.568 | -96.154.171 | -31.415.603 |
| 25-may. | 66.331.874 | -43.983.844 | 22.348.030 |
| 26-may. | 67.426.417 | 3.975.478 | 71.401.895 |
| 27-may. | 44.466.013 | 44.071.866 | 88.537.879 |
| 28-may. | 45.502.728 | 84.133.314 | 129.636.042 |
| 29-may. | 45.707.710 | 139.704.388 | 185.412.098 |
| 30-may. | 46.411.945 | 205.637.330 | 252.049.275 |
| 31-may. | 45.753.728 | 269.637.616 | 315.391.344 |

Evolución existencias cuentas GTS en PR Huelva



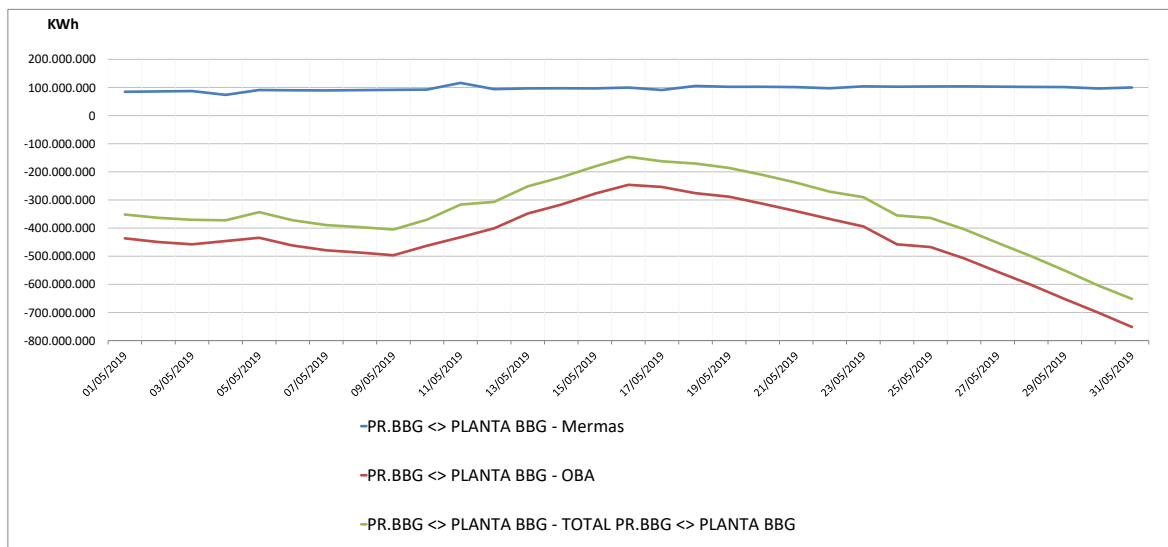
Observaciones:

Cuentas GTS en PR Bilbao: Mayo 2019

Seguimiento diario provisional de existencias (d+1)

| Unidad: KWh | | | |
|-------------|-------------|--------------|----------------------------|
| | Mermas | OBA | TOTAL PR.BBG <> PLANTA BBG |
| 1-may. | 84.630.900 | -436.475.852 | -351.844.952 |
| 2-may. | 85.971.334 | -449.543.204 | -363.571.870 |
| 3-may. | 87.213.832 | -457.741.131 | -370.527.299 |
| 4-may. | 73.758.251 | -446.048.107 | -372.289.856 |
| 5-may. | 90.971.950 | -434.376.580 | -343.404.630 |
| 6-may. | 89.929.899 | -461.998.465 | -372.068.566 |
| 7-may. | 89.491.773 | -478.907.447 | -389.415.674 |
| 8-may. | 90.503.997 | -487.024.483 | -396.520.486 |
| 9-may. | 91.552.971 | -496.541.099 | -404.988.128 |
| 10-may. | 92.474.472 | -462.653.726 | -370.179.254 |
| 11-may. | 116.225.665 | -432.481.525 | -316.255.860 |
| 12-may. | 94.075.421 | -400.888.908 | -306.813.487 |
| 13-may. | 96.701.589 | -348.208.161 | -251.506.572 |
| 14-may. | 97.169.960 | -316.419.624 | -219.249.664 |
| 15-may. | 96.684.835 | -277.523.481 | -180.838.646 |
| 16-may. | 99.615.598 | -246.102.088 | -146.486.490 |
| 17-may. | 91.142.632 | -253.695.300 | -162.552.668 |
| 18-may. | 105.397.923 | -275.907.199 | -170.509.276 |
| 19-may. | 102.284.111 | -288.414.843 | -186.130.732 |
| 20-may. | 102.458.899 | -313.376.537 | -210.917.638 |
| 21-may. | 101.258.208 | -339.805.731 | -238.547.523 |
| 22-may. | 97.159.660 | -367.717.295 | -270.557.635 |
| 23-may. | 103.984.169 | -394.085.401 | -290.101.232 |
| 24-may. | 102.673.393 | -457.700.606 | -355.027.213 |
| 25-may. | 103.474.557 | -467.430.603 | -363.956.046 |
| 26-may. | 103.885.128 | -507.768.958 | -403.883.830 |
| 27-may. | 102.880.621 | -555.387.936 | -452.507.315 |
| 28-may. | 101.948.630 | -601.885.902 | -499.937.272 |
| 29-may. | 101.438.519 | -652.350.654 | -550.912.135 |
| 30-may. | 96.354.381 | -700.675.370 | -604.320.989 |
| 31-may. | 99.853.553 | -751.645.401 | -651.791.848 |

Evolución existencias cuentas GTS en PR Bilbao



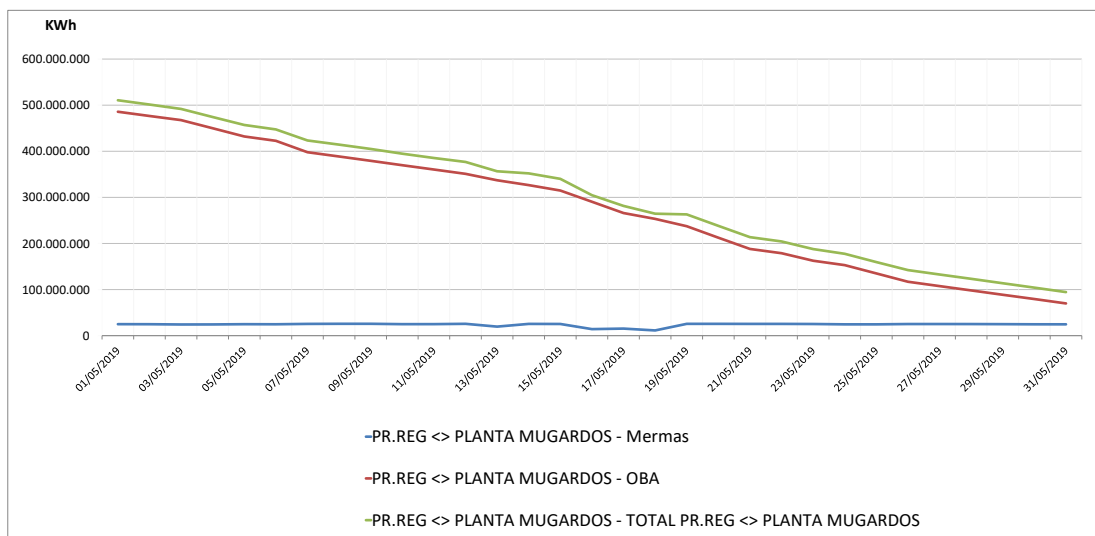
Observaciones:

Cuentas GTS en PR Mugarodos: Mayo 2019

Seguimiento diario provisional de existencias (d+1)

| Unidad: KWh | | | |
|-------------|------------|-------------|---------------------------------|
| | Mermas | OBA | TOTAL PR.REG <> PLANTA MUGARDOS |
| 1-may. | 24.928.166 | 485.766.611 | 510.694.777 |
| 2-may. | 24.812.444 | 476.552.083 | 501.364.527 |
| 3-may. | 24.237.086 | 467.568.243 | 491.805.329 |
| 4-may. | 24.399.294 | 449.938.867 | 474.338.161 |
| 5-may. | 24.912.106 | 432.121.907 | 457.034.013 |
| 6-may. | 24.738.584 | 422.622.451 | 447.361.035 |
| 7-may. | 25.523.361 | 397.921.075 | 423.444.436 |
| 8-may. | 25.788.672 | 388.604.627 | 414.393.299 |
| 9-may. | 25.773.901 | 379.259.404 | 405.033.305 |
| 10-may. | 24.973.359 | 369.779.692 | 394.753.051 |
| 11-may. | 25.029.960 | 360.414.476 | 385.444.436 |
| 12-may. | 25.743.884 | 351.060.396 | 376.804.280 |
| 13-may. | 19.578.304 | 337.079.980 | 356.658.284 |
| 14-may. | 25.482.422 | 326.544.652 | 352.027.074 |
| 15-may. | 25.363.287 | 314.798.444 | 340.161.731 |
| 16-may. | 14.199.876 | 290.475.596 | 304.675.472 |
| 17-may. | 15.392.014 | 266.017.900 | 281.409.914 |
| 18-may. | 11.359.278 | 253.293.932 | 264.653.210 |
| 19-may. | 25.613.696 | 237.411.244 | 263.024.940 |
| 20-may. | 25.642.700 | 212.567.372 | 238.210.072 |
| 21-may. | 25.534.050 | 188.124.012 | 213.658.062 |
| 22-may. | 25.483.719 | 178.869.388 | 204.353.107 |
| 23-may. | 25.314.267 | 162.535.532 | 187.849.799 |
| 24-may. | 24.568.783 | 153.015.884 | 177.584.667 |
| 25-may. | 24.569.659 | 135.014.924 | 159.584.583 |
| 26-may. | 25.259.851 | 116.940.748 | 142.200.599 |
| 27-may. | 25.202.498 | 107.489.132 | 132.691.630 |
| 28-may. | 25.164.690 | 98.143.884 | 123.308.574 |
| 29-may. | 24.945.397 | 88.706.028 | 113.651.425 |
| 30-may. | 24.697.790 | 79.453.807 | 104.151.597 |
| 31-may. | 24.584.493 | 69.899.599 | 94.484.092 |

Evolución existencias cuentas GTS en PR Mugarodos



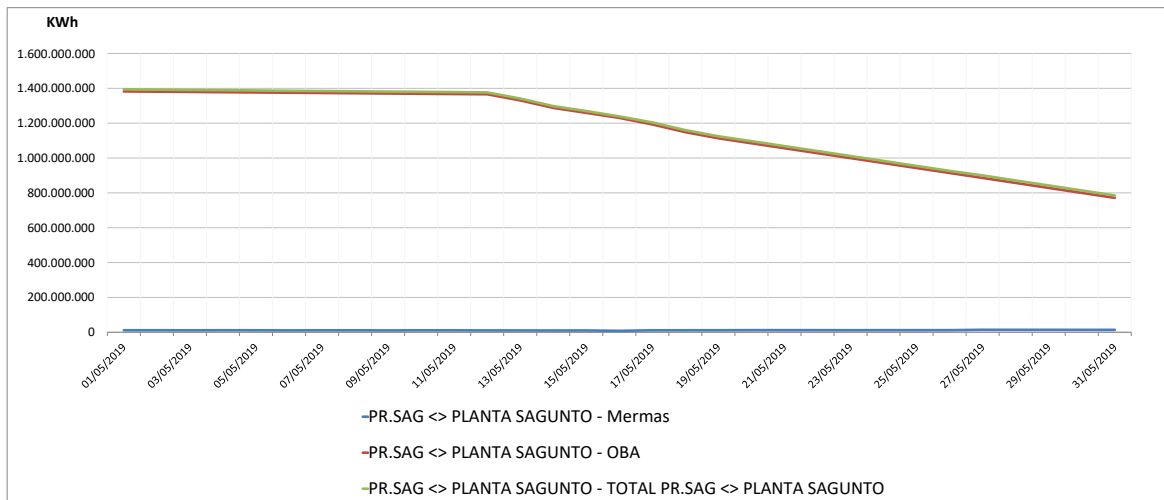
Observaciones:

Cuentas GTS en PR Sagunto: Mayo 2019

Seguimiento diario provisional de existencias (d+1)

| Unidad: KWh | | | |
|-------------|------------|---------------|--------------------------------|
| | Mermas | OBA | TOTAL PR.SAG <> PLANTA SAGUNTO |
| 1-may. | 11.489.442 | 1.382.437.927 | 1.393.927.369 |
| 2-may. | 11.426.616 | 1.380.963.592 | 1.392.390.208 |
| 3-may. | 10.992.234 | 1.379.473.641 | 1.390.465.875 |
| 4-may. | 11.443.824 | 1.377.944.778 | 1.389.388.602 |
| 5-may. | 11.378.252 | 1.376.408.619 | 1.387.786.871 |
| 6-may. | 10.826.785 | 1.374.914.572 | 1.385.741.357 |
| 7-may. | 11.150.713 | 1.373.405.549 | 1.384.556.262 |
| 8-may. | 11.070.852 | 1.371.910.734 | 1.382.981.586 |
| 9-may. | 10.603.459 | 1.370.421.679 | 1.381.025.138 |
| 10-may. | 11.057.118 | 1.368.920.976 | 1.379.978.094 |
| 11-may. | 10.956.101 | 1.367.401.201 | 1.378.357.302 |
| 12-may. | 10.524.388 | 1.365.865.042 | 1.376.389.430 |
| 13-may. | 10.332.613 | 1.330.903.987 | 1.341.236.600 |
| 14-may. | 9.988.493 | 1.287.828.500 | 1.297.816.993 |
| 15-may. | 10.142.594 | 1.259.285.621 | 1.269.428.215 |
| 16-may. | 8.322.910 | 1.230.513.366 | 1.238.836.276 |
| 17-may. | 11.148.348 | 1.192.885.559 | 1.204.033.907 |
| 18-may. | 11.299.125 | 1.148.646.808 | 1.159.945.933 |
| 19-may. | 11.448.784 | 1.113.329.145 | 1.124.777.929 |
| 20-may. | 11.984.566 | 1.084.753.498 | 1.096.738.064 |
| 21-may. | 11.905.581 | 1.056.415.419 | 1.068.321.000 |
| 22-may. | 11.794.458 | 1.027.987.228 | 1.039.781.686 |
| 23-may. | 11.778.061 | 999.559.037 | 1.011.337.098 |
| 24-may. | 11.844.039 | 971.188.190 | 983.032.229 |
| 25-may. | 11.828.748 | 942.768.191 | 954.596.939 |
| 26-may. | 11.823.195 | 914.315.424 | 926.138.619 |
| 27-may. | 14.234.550 | 885.764.353 | 899.998.903 |
| 28-may. | 13.954.539 | 857.082.210 | 871.036.749 |
| 29-may. | 14.038.824 | 828.490.179 | 842.529.003 |
| 30-may. | 13.697.557 | 799.971.876 | 813.669.433 |
| 31-may. | 13.743.019 | 771.420.805 | 785.163.824 |

Evolución existencias cuentas GTS en PR Sagunto



Observaciones: