



# **Seguimiento Cuentas del GTS**

**Información diaria provisional (d+1)**

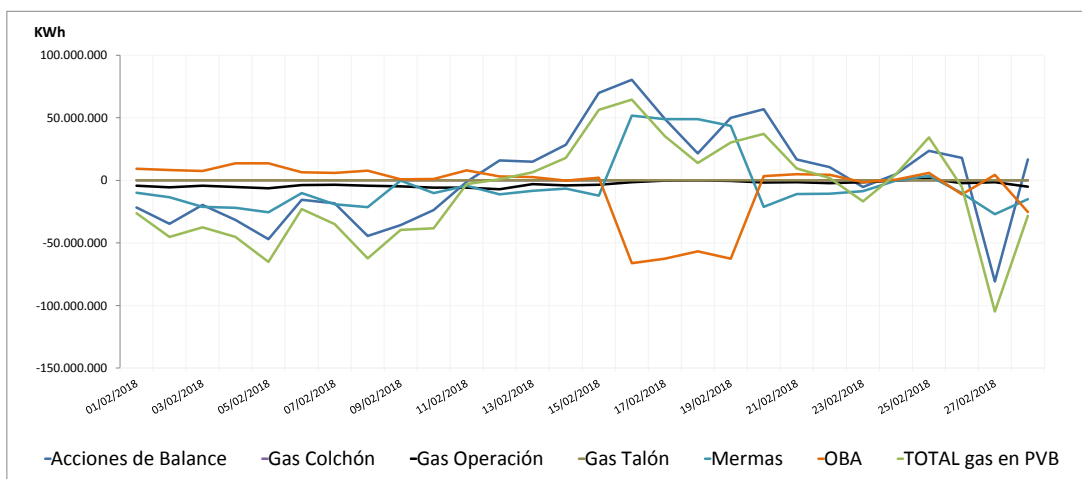
febrero-18

**16/08/2018**

## Seguimiento diario provisional de existencias (d+1)

Unidad:KWh	Acciones de Balance	Gas Colchón	Gas Operación	Gas Talón	Mermas	OBA	TOTAL gas en PVB
1-feb-18	-21.571.653	0	-4.366.163	0	-9.817.785	9.384.725	<b>-26.370.876</b>
2-feb-18	-34.674.151	0	-5.455.040	0	-13.410.003	8.315.738	<b>-45.223.456</b>
3-feb-18	-19.568.481	0	-4.254.472	0	-21.206.807	7.611.967	<b>-37.417.793</b>
4-feb-18	-31.588.664	0	-5.242.628	0	-22.020.966	13.635.019	<b>-45.217.239</b>
5-feb-18	-46.877.965	0	-6.414.797	0	-25.584.145	13.634.348	<b>-65.242.559</b>
6-feb-18	-15.457.345	0	-3.674.558	0	-10.225.658	6.537.720	<b>-22.819.841</b>
7-feb-18	-18.244.047	0	-3.527.572	0	-19.005.709	5.874.873	<b>-34.902.455</b>
8-feb-18	-44.473.228	0	-4.253.881	0	-21.447.119	7.878.731	<b>-62.295.497</b>
9-feb-18	-35.786.608	0	-4.650.680	0	-98.823	951.534	<b>-39.584.577</b>
10-feb-18	-23.572.201	0	-5.745.006	0	-10.088.484	1.116.420	<b>-38.289.271</b>
11-feb-18	-1.156.335	0	-5.819.153	0	-4.247.850	8.140.206	<b>-3.083.132</b>
12-feb-18	16.070.303	0	-6.967.679	0	-11.208.373	3.066.014	<b>960.265</b>
13-feb-18	14.895.290	0	-2.954.103	0	-8.233.424	2.746.804	<b>6.454.567</b>
14-feb-18	28.618.776	0	-3.993.609	0	-6.420.642	-266.582	<b>17.937.943</b>
15-feb-18	70.056.864	0	-3.535.975	0	-12.114.014	2.066.955	<b>56.473.830</b>
16-feb-18	80.543.627	0	-1.521.534	0	51.768.894	-66.151.798	<b>64.639.189</b>
17-feb-18	49.290.424	0	-95.902	0	48.845.524	-62.605.592	<b>35.434.454</b>
18-feb-18	21.710.738	0	165.248	0	48.877.330	-56.784.254	<b>13.969.062</b>
19-feb-18	49.951.812	0	-462.377	0	43.501.787	-62.692.786	<b>30.298.436</b>
20-feb-18	56.791.753	0	-1.643.883	0	-21.248.473	3.401.127	<b>37.300.524</b>
21-feb-18	16.845.146	0	-1.374.013	0	-10.913.998	5.052.618	<b>9.609.753</b>
22-feb-18	10.665.576	0	-2.297.383	0	-10.732.050	4.349.980	<b>1.986.123</b>
23-feb-18	-5.165.897	0	-1.514.141	0	-8.706.733	-1.359.485	<b>-16.746.256</b>
24-feb-18	4.966.071	0	-204.421	0	-266.616	544.380	<b>5.039.414</b>
25-feb-18	23.618.108	0	1.351.786	0	3.648.578	5.872.882	<b>34.491.354</b>
26-feb-18	18.033.428	0	-2.093.704	0	-10.215.410	-11.042.314	<b>-5.318.000</b>
27-feb-18	-80.854.259	0	-1.436.185	0	-27.120.386	4.570.149	<b>-104.840.681</b>
28-feb-18	16.833.951	0	-5.054.281	0	-14.910.140	-25.160.338	<b>-28.290.808</b>

### Evolución existencias cuentas GTS en PVB



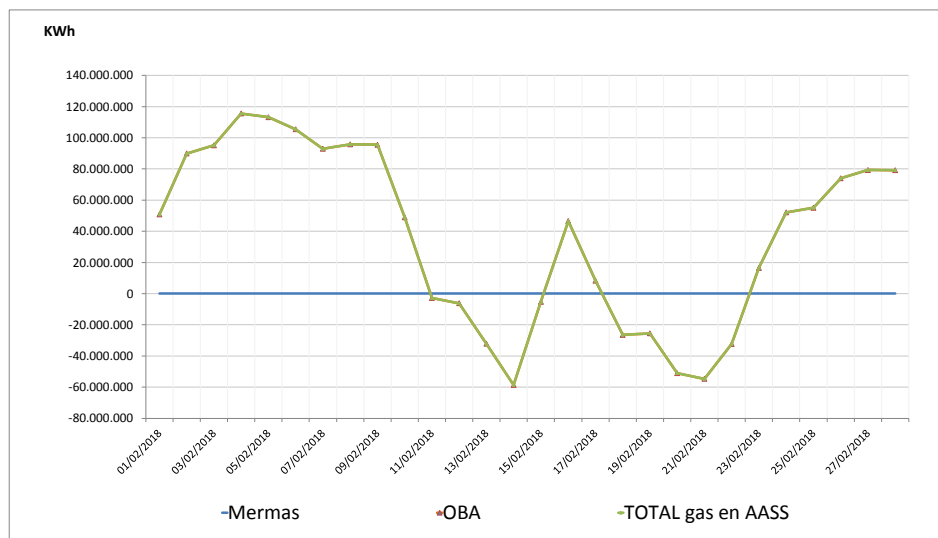
Observaciones:

# Cuentas GTS en AASS: Febrero 2018

## Seguimiento diario provisional de existencias (d+1)

Unidad:KWh	Mermas	OBA	TOTAL gas en AASS
1-feb	0	50.822.938	50.822.938
2-feb	0	89.916.672	89.916.672
3-feb	0	95.107.724	95.107.724
4-feb	0	115.581.980	115.581.980
5-feb	0	113.177.935	113.177.935
6-feb	0	105.453.342	105.453.342
7-feb	0	92.942.164	92.942.164
8-feb	0	95.742.921	95.742.921
9-feb	0	95.510.084	95.510.084
10-feb	0	48.970.850	48.970.850
11-feb	0	-2.815.727	-2.815.727
12-feb	0	-6.175.128	-6.175.128
13-feb	0	-32.124.490	-32.124.490
14-feb	0	-58.600.602	-58.600.602
15-feb	0	-5.283.415	-5.283.415
16-feb	0	46.574.632	46.574.632
17-feb	0	8.294.412	8.294.412
18-feb	0	-26.480.497	-26.480.497
19-feb	0	-25.470.794	-25.470.794
20-feb	0	-51.032.977	-51.032.977
21-feb	0	-54.660.975	-54.660.975
22-feb	0	-32.337.886	-32.337.886
23-feb	0	16.482.337	16.482.337
24-feb	0	52.110.991	52.110.991
25-feb	0	55.056.552	55.056.552
26-feb	0	73.980.576	73.980.576
27-feb	0	79.275.063	79.275.063
28-feb	0	79.204.934	79.204.934

### Evolución existencias cuentas GTS en AASS



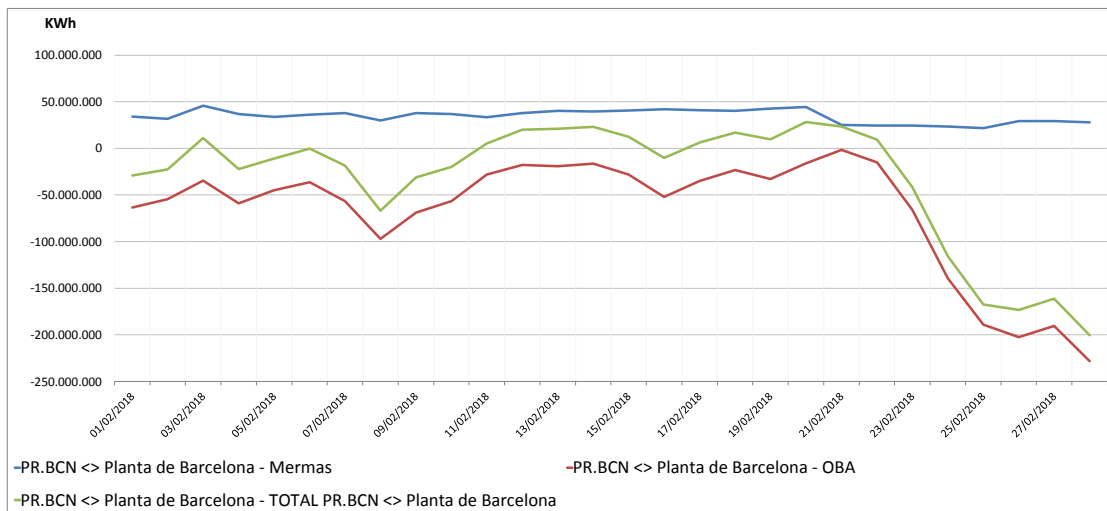
Observaciones :

# Cuentas GTS en PR Barcelona: Febrero 2018

## Seguimiento diario provisional de existencias (d+1)

Unidad: KWh			
	Mermas	OBA	TOTAL PR.BCN <> Planta de Barcelona
1-feb	34.253.254	-63.389.726	-29.136.472
2-feb	31.771.840	-54.376.061	-22.604.221
3-feb	45.886.835	-34.732.170	11.154.665
4-feb	36.800.746	-58.901.781	-22.101.035
5-feb	33.894.742	-44.883.087	-10.988.345
6-feb	36.215.330	-36.364.905	-149.575
7-feb	37.977.867	-56.385.569	-18.407.702
8-feb	30.110.299	-97.112.345	-67.002.046
9-feb	37.771.831	-69.002.098	-31.230.267
10-feb	36.893.604	-56.659.955	-19.766.351
11-feb	33.451.267	-28.140.140	5.311.127
12-feb	37.850.992	-17.735.300	20.115.692
13-feb	40.332.106	-19.285.390	21.046.716
14-feb	39.621.015	-16.406.582	23.214.433
15-feb	40.504.805	-28.100.158	12.404.647
16-feb	41.984.199	-52.239.709	-10.255.510
17-feb	41.123.769	-34.799.239	6.324.530
18-feb	40.153.231	-23.317.992	16.835.239
19-feb	42.815.679	-33.016.703	9.798.976
20-feb	44.289.365	-16.169.166	28.120.199
21-feb	25.017.296	-1.478.995	23.538.301
22-feb	24.401.876	-15.048.898	9.352.978
23-feb	24.336.875	-65.739.632	-41.402.757
24-feb	23.466.899	-139.141.296	-115.674.397
25-feb	21.645.877	-188.940.973	-167.295.096
26-feb	29.156.053	-202.344.414	-173.188.361
27-feb	29.181.166	-190.433.616	-161.252.450
28-feb	27.805.955	-228.256.392	-200.450.437

### Evolución existencias cuentas GTS en PR Barcelona

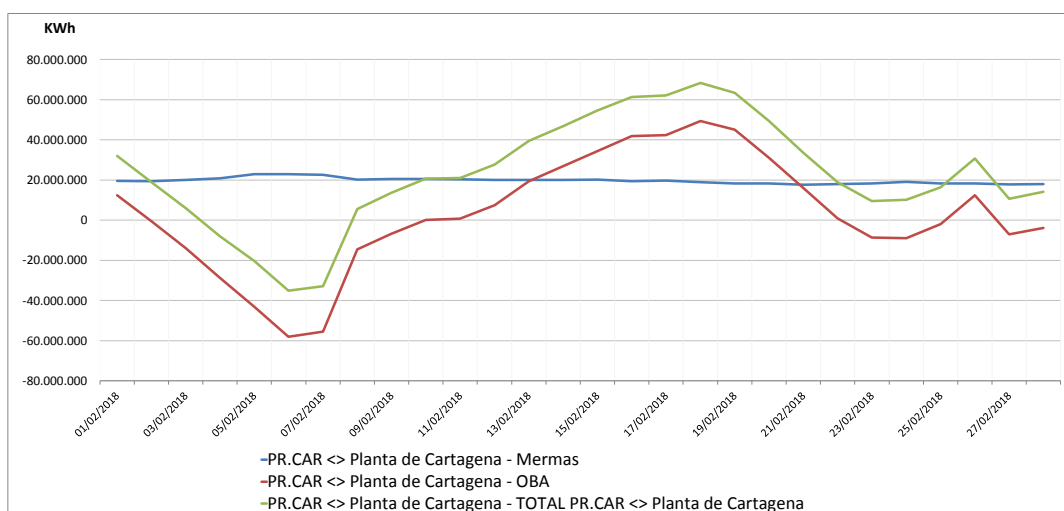


Observaciones:

## Seguimiento diario provisional de existencias (d+1)

Unidad: KWh			
	Mermas	OBA	TOTAL PR.CAR <> Planta de Cartagena
1-feb	19.571.783	12.401.695	31.973.478
2-feb	19.384.496	-458.309	18.926.187
3-feb	19.992.647	-13.902.005	6.090.642
4-feb	20.754.957	-28.692.923	-7.937.966
5-feb	22.874.120	-43.146.809	-20.272.689
6-feb	22.968.244	-58.121.424	-35.153.180
7-feb	22.654.284	-55.510.264	-32.855.980
8-feb	20.170.535	-14.575.800	5.594.735
9-feb	20.445.704	-6.773.588	13.672.116
10-feb	20.506.752	155.477	20.662.229
11-feb	20.281.352	742.544	21.023.896
12-feb	20.100.796	7.515.279	27.616.075
13-feb	19.977.444	19.456.591	39.434.035
14-feb	19.988.176	26.877.026	46.865.202
15-feb	20.242.189	34.443.146	54.685.335
16-feb	19.380.106	41.857.092	61.237.198
17-feb	19.752.818	42.399.710	62.152.528
18-feb	18.911.064	49.429.018	68.340.082
19-feb	18.314.056	45.007.185	63.321.241
20-feb	18.291.793	30.994.108	49.285.901
21-feb	17.600.284	16.020.247	33.620.531
22-feb	18.017.318	957.926	18.975.244
23-feb	18.293.097	-8.728.725	9.564.372
24-feb	19.118.381	-8.959.233	10.159.148
25-feb	18.344.141	-2.023.659	16.320.482
26-feb	18.226.022	12.434.958	30.660.980
27-feb	17.803.076	-7.128.233	10.674.843
28-feb	18.009.154	-3.912.068	14.097.086

## Evolución existencias cuentas GTS en PR Cartagena



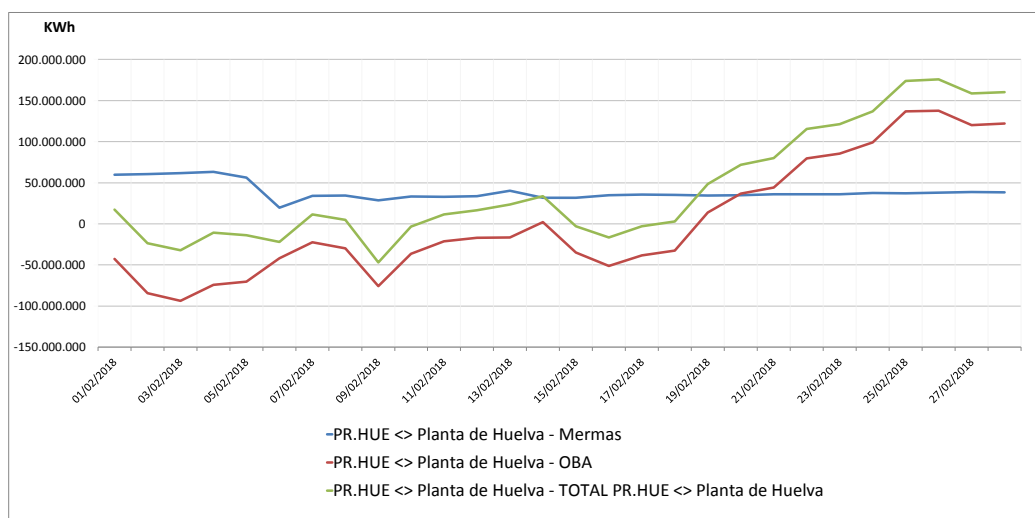
Observaciones:

# Cuentas GTS en PR Huelva: Febrero 2018

## Seguimiento diario provisional de existencias (d+1)

Unidad: KWh			
	Mermas	OBA	TOTAL PR.HUE <> Planta de Huelva
1-feb	59.803.997	-42.639.759	17.164.238
2-feb	60.606.661	-84.098.596	-23.491.935
3-feb	61.881.966	-93.795.389	-31.913.423
4-feb	63.330.151	-74.175.741	-10.845.590
5-feb	56.116.665	-70.078.962	-13.962.297
6-feb	19.784.623	-41.659.824	-21.875.201
7-feb	34.134.597	-22.476.640	11.657.957
8-feb	34.552.978	-29.836.939	4.716.039
9-feb	28.825.363	-75.553.570	-46.728.207
10-feb	33.279.394	-36.539.575	-3.260.181
11-feb	32.871.955	-21.372.569	11.499.386
12-feb	33.626.817	-16.919.460	16.707.357
13-feb	40.313.479	-16.629.407	23.684.072
14-feb	31.603.735	2.122.735	33.726.470
15-feb	31.664.700	-34.674.556	-3.009.856
16-feb	34.791.455	-51.125.599	-16.334.144
17-feb	35.664.986	-38.458.988	-2.794.002
18-feb	35.200.388	-32.347.652	2.852.736
19-feb	34.547.006	13.952.899	48.499.905
20-feb	34.814.840	36.962.248	71.777.088
21-feb	35.893.998	44.058.096	79.952.094
22-feb	36.103.927	79.526.893	115.630.820
23-feb	36.081.683	85.397.728	121.479.411
24-feb	37.506.734	99.296.791	136.803.525
25-feb	37.073.573	136.709.417	173.782.990
26-feb	38.075.179	137.552.328	175.627.507
27-feb	38.675.947	120.026.227	158.702.174
28-feb	38.486.956	121.923.007	160.409.963

### Evolución existencias cuentas GTS en PR Huelva

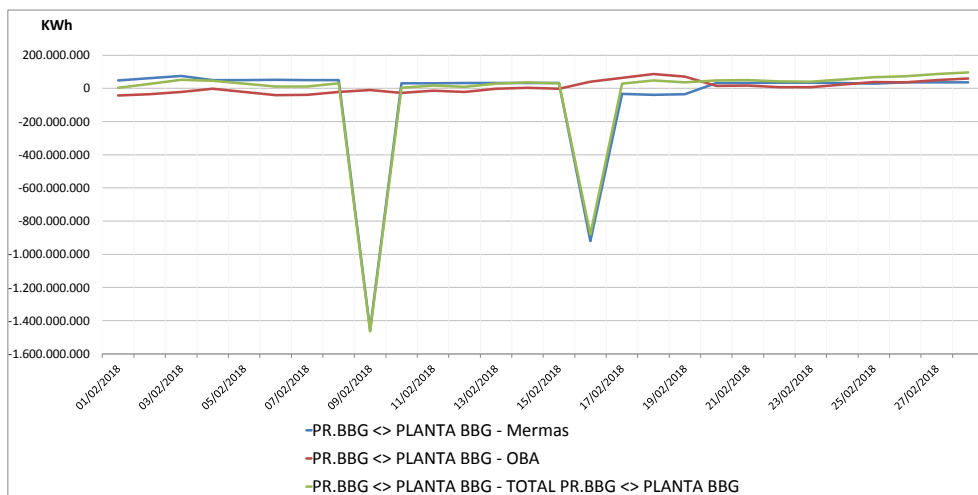


Observaciones:

## Seguimiento diario provisional de existencias (d+1)

Unidad: KWh			
	Mermas	OBA	TOTAL PR.BBG <> PLANTA BBG
1-feb	47.449.846	-43.138.874	4.310.972
2-feb	62.081.990	-36.140.232	25.941.758
3-feb	74.703.640	-22.548.868	52.154.772
4-feb	48.833.713	-3.210.255	45.623.458
5-feb	48.869.005	-21.015.261	27.853.744
6-feb	51.450.062	-40.394.070	11.055.992
7-feb	49.735.745	-38.925.789	10.809.956
8-feb	50.544.598	-20.842.683	29.701.915
9-feb	-1.455.690.199	-9.601.027	-1.465.291.226
10-feb	30.844.593	-27.010.862	3.833.731
11-feb	31.176.152	-13.947.143	17.229.009
12-feb	31.515.103	-21.808.261	9.706.842
13-feb	32.092.531	-3.083.788	29.008.743
14-feb	32.294.681	3.176.154	35.470.835
15-feb	32.931.595	-1.707.222	31.224.373
16-feb	-920.786.650	40.884.944	-879.901.706
17-feb	-33.683.277	62.526.677	28.843.400
18-feb	-39.151.884	86.961.629	47.809.745
19-feb	-34.804.880	70.218.100	35.413.220
20-feb	32.883.802	14.216.282	47.100.084
21-feb	33.037.102	15.981.125	49.018.227
22-feb	33.602.726	7.547.583	41.150.309
23-feb	34.075.052	6.805.695	40.880.747
24-feb	31.956.472	21.920.677	53.877.149
25-feb	28.756.736	38.247.611	67.004.347
26-feb	35.234.076	36.772.404	72.006.480
27-feb	35.919.013	49.783.080	85.702.093
28-feb	36.555.594	58.774.798	95.330.392

### Evolución existencias cuentas GTS en PR Bilbao



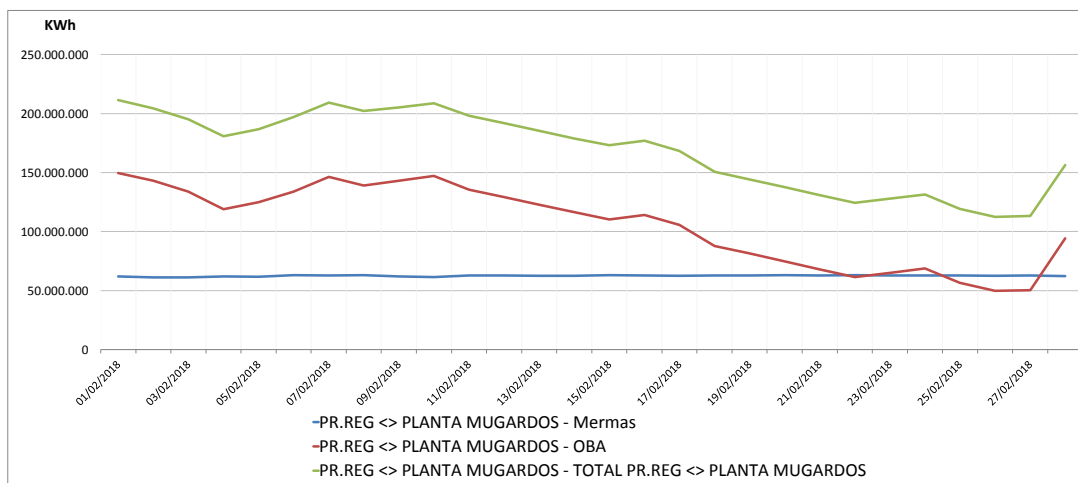
Observaciones:

# Cuentas GTS en PR MugarDOS: Febrero 2018

## Seguimiento diario provisional de existencias (d+1)

Unidad: KWh			
	Mermas	OBA	TOTAL PR.REG <> PLANTA MUGARDOS
1-feb	62.037.472	149.486.008	211.523.480
2-feb	61.267.647	143.142.696	204.410.343
3-feb	61.187.373	133.889.496	195.076.869
4-feb	61.926.894	118.816.664	180.743.558
5-feb	61.750.989	124.961.160	186.712.149
6-feb	63.096.976	133.855.720	196.952.696
7-feb	62.811.856	146.406.360	209.218.216
8-feb	63.065.998	139.039.048	202.105.046
9-feb	62.023.805	143.021.752	205.045.557
10-feb	61.471.981	147.188.776	208.660.757
11-feb	62.692.693	135.532.072	198.224.765
12-feb	62.721.924	129.127.320	191.849.244
13-feb	62.625.115	122.771.720	185.396.835
14-feb	62.434.087	116.379.256	178.813.343
15-feb	62.923.888	110.150.632	173.074.520
16-feb	62.733.474	114.088.280	176.821.754
17-feb	62.475.647	105.711.160	168.186.807
18-feb	62.825.904	87.747.256	150.573.160
19-feb	62.681.042	81.547.304	144.228.346
20-feb	63.000.392	74.671.512	137.671.904
21-feb	62.888.975	67.836.680	130.725.655
22-feb	62.916.502	61.341.816	124.258.318
23-feb	62.877.560	65.050.348	127.927.908
24-feb	62.836.362	68.664.412	131.500.774
25-feb	62.648.499	56.606.300	119.254.799
26-feb	62.619.440	49.771.468	112.390.908
27-feb	62.826.237	50.271.804	113.098.041
28-feb	62.174.312	94.149.060	156.323.372

### Evolución existencias cuentas GTS en PR MugarDOS



Observaciones:

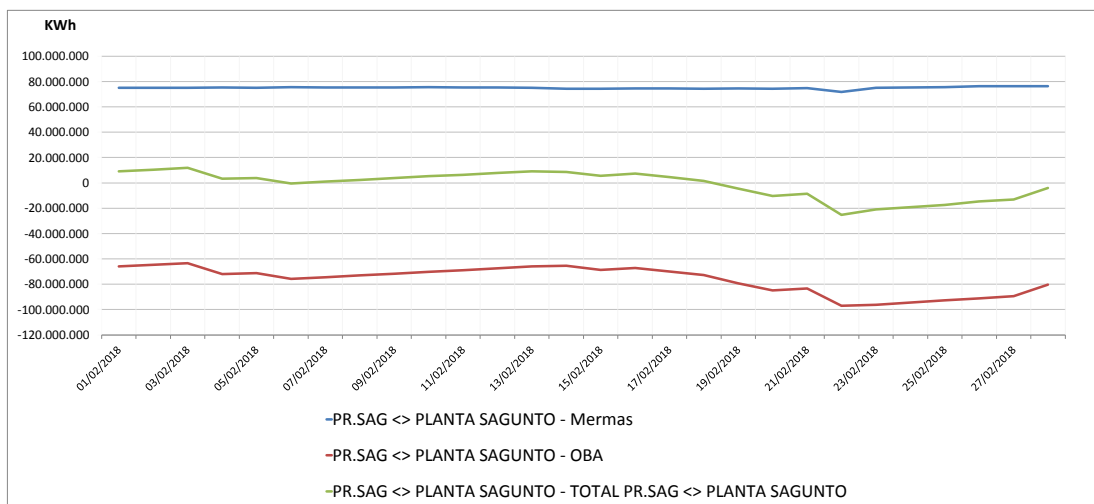


# Cuentas GTS en PR Sagunto: Febrero 2018

## Seguimiento diario provisional de existencias (d+1)

Unidad: KWh			
	Mermas	OBA	TOTAL PR.SAG <> PLANTA SAGUNTO
1-feb	75.010.532	-66.015.559	8.994.973
2-feb	75.024.453	-64.651.031	10.373.422
3-feb	75.122.008	-63.337.015	11.784.993
4-feb	75.175.051	-71.882.423	3.292.628
5-feb	75.025.117	-71.295.671	3.729.446
6-feb	75.464.809	-75.833.975	-369.166
7-feb	75.411.397	-74.424.855	986.542
8-feb	75.402.637	-73.005.223	2.397.414
9-feb	75.367.758	-71.605.959	3.761.799
10-feb	75.500.479	-70.221.063	5.279.416
11-feb	75.168.542	-68.835.943	6.332.599
12-feb	75.182.003	-67.364.503	7.817.500
13-feb	75.034.074	-65.905.143	9.128.931
14-feb	74.174.127	-65.454.135	8.719.992
15-feb	74.316.405	-68.706.759	5.609.646
16-feb	74.659.957	-67.252.647	7.407.310
17-feb	74.626.553	-70.028.999	4.597.554
18-feb	74.313.739	-72.829.047	1.484.692
19-feb	74.567.285	-79.197.031	-4.629.746
20-feb	74.399.454	-84.793.495	-10.394.041
21-feb	74.703.434	-83.312.503	-8.609.069
22-feb	71.829.118	-97.012.919	-25.183.801
23-feb	75.066.795	-96.118.871	-21.052.076
24-feb	75.219.244	-94.460.055	-19.240.811
25-feb	75.461.199	-92.792.343	-17.331.144
26-feb	76.397.645	-91.078.887	-14.681.242
27-feb	76.417.086	-89.407.607	-12.990.521
28-feb	76.404.561	-80.402.087	-3.997.526

## Evolución existencias cuentas GTS en PR Sagunto



Observaciones: