



# **Seguimiento Cuentas del GTS**

**Información diaria provisional (d+1)**

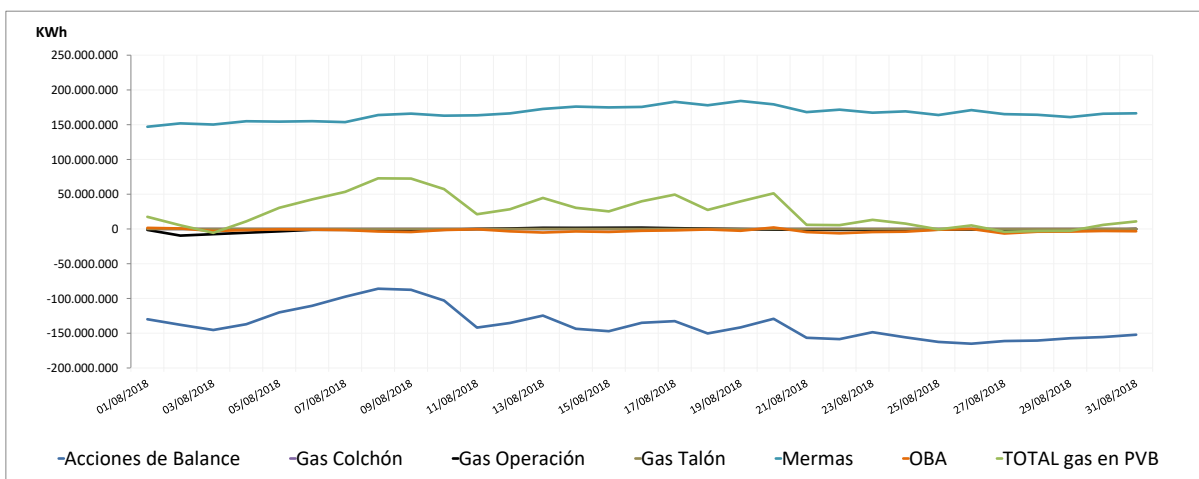
agosto-18

**01/10/2018**

## Seguimiento diario provisional de existencias (d+1)

Unidad:KWh							
	Acciones de Balance	Gas Colchón	Gas Operación	Gas Talón	Mermas	OBA	TOTAL gas en PVB
1-ago.	-129.885.088	0	-1.299.203	0	147.054.278	1.576.944	<b>17.446.931</b>
2-ago.	-137.864.678	0	-9.532.254	0	151.922.874	749.949	<b>5.275.891</b>
3-ago.	-145.342.158	0	-7.500.135	0	150.203.683	-2.936.052	<b>-5.574.662</b>
4-ago.	-137.021.535	0	-5.438.059	0	154.996.216	-1.611.029	<b>10.925.593</b>
5-ago.	-120.031.744	0	-3.391.378	0	154.426.267	-573.478	<b>30.429.667</b>
6-ago.	-110.493.254	0	-1.184.803	0	155.077.343	-849.015	<b>42.550.271</b>
7-ago.	-97.480.401	0	-1.168.495	0	153.667.646	-1.614.694	<b>53.404.056</b>
8-ago.	-85.960.185	0	-1.441.461	0	163.890.303	-3.631.364	<b>72.857.293</b>
9-ago.	-87.502.136	0	-1.562.600	0	165.921.995	-4.377.534	<b>72.479.725</b>
10-ago.	-102.952.137	0	-1.096.713	0	162.954.722	-1.524.710	<b>57.381.162</b>
11-ago.	-141.919.079	0	-6.759	0	163.533.356	-399.264	<b>21.208.254</b>
12-ago.	-135.255.428	0	713.581	0	166.305.490	-3.404.267	<b>28.359.376</b>
13-ago.	-124.637.430	0	1.689.948	0	172.688.785	-5.124.204	<b>44.617.099</b>
14-ago.	-143.625.465	0	1.558.620	0	176.060.479	-3.536.441	<b>30.457.193</b>
15-ago.	-147.050.863	0	1.740.132	0	174.850.773	-4.257.924	<b>25.282.118</b>
16-ago.	-134.994.326	0	1.904.992	0	175.608.862	-2.676.266	<b>39.843.262</b>
17-ago.	-132.607.048	0	1.136.237	0	182.943.195	-2.034.003	<b>49.438.381</b>
18-ago.	-150.270.056	0	483.217	0	177.927.703	-726.109	<b>27.414.755</b>
19-ago.	-141.596.243	0	-258.759	0	184.173.475	-2.627.401	<b>39.691.072</b>
20-ago.	-129.220.411	0	-960.912	0	179.288.425	2.168.726	<b>51.275.828</b>
21-ago.	-156.559.493	0	-1.156.697	0	168.155.442	-4.486.254	<b>5.952.998</b>
22-ago.	-158.489.266	0	-1.355.842	0	171.617.417	-6.257.661	<b>5.514.648</b>
23-ago.	-148.533.511	0	-1.178.562	0	167.253.999	-4.426.184	<b>13.115.742</b>
24-ago.	-155.910.798	0	-1.670.440	0	169.207.470	-3.919.435	<b>7.706.797</b>
25-ago.	-162.487.980	0	-979.967	0	163.938.764	-1.095.212	<b>-624.395</b>
26-ago.	-165.067.877	0	-777.647	0	170.972.693	-14.885	<b>5.112.284</b>
27-ago.	-161.237.963	0	-1.491.872	0	165.164.540	-6.533.834	<b>-4.099.129</b>
28-ago.	-160.560.291	0	-2.667.850	0	164.251.259	-3.943.792	<b>-2.920.674</b>
29-ago.	-157.196.809	0	-2.668.794	0	160.962.158	-3.781.279	<b>-2.684.724</b>
30-ago.	-155.492.284	0	-1.524.171	0	165.766.053	-2.892.082	<b>5.857.516</b>
31-ago.	-152.115.491	0	-126.915	0	166.371.040	-3.242.923	<b>10.885.711</b>

## Evolución existencias cuentas GTS en PVB



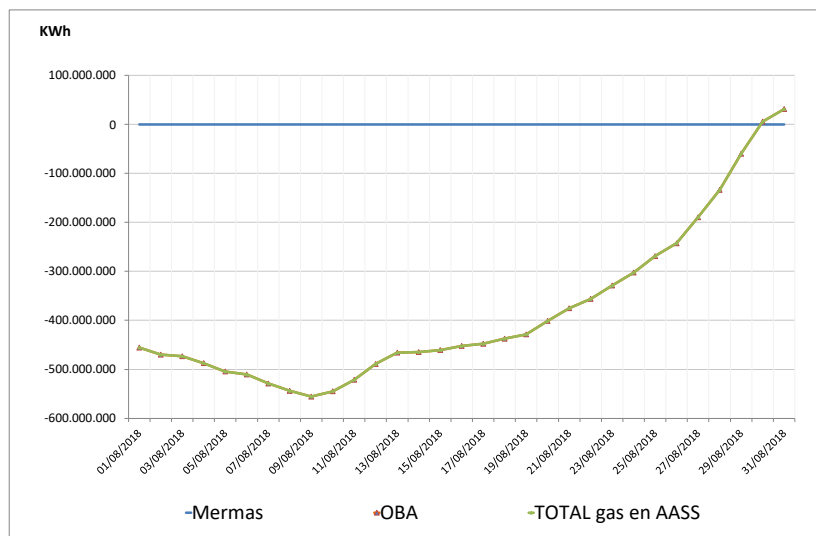
Observaciones:

# Cuentas GTS en AASS: Agosto 2018

## Seguimiento diario provisional de existencias (d+1)

Unidad:KWh	Mermas	OBA	TOTAL gas en AASS
1-ago.	0	-455.709.578	-455.709.578
2-ago.	0	-470.038.853	-470.038.853
3-ago.	0	-473.184.083	-473.184.083
4-ago.	0	-487.270.658	-487.270.658
5-ago.	0	-504.347.073	-504.347.073
6-ago.	0	-510.571.975	-510.571.975
7-ago.	0	-529.027.187	-529.027.187
8-ago.	0	-543.944.991	-543.944.991
9-ago.	0	-555.741.087	-555.741.087
10-ago.	0	-544.774.664	-544.774.664
11-ago.	0	-521.321.811	-521.321.811
12-ago.	0	-489.092.323	-489.092.323
13-ago.	0	-465.878.497	-465.878.497
14-ago.	0	-464.711.423	-464.711.423
15-ago.	0	-460.528.863	-460.528.863
16-ago.	0	-452.149.755	-452.149.755
17-ago.	0	-447.825.113	-447.825.113
18-ago.	0	-437.522.340	-437.522.340
19-ago.	0	-428.637.839	-428.637.839
20-ago.	0	-401.129.527	-401.129.527
21-ago.	0	-375.281.444	-375.281.444
22-ago.	0	-356.151.978	-356.151.978
23-ago.	0	-328.901.335	-328.901.335
24-ago.	0	-302.341.532	-302.341.532
25-ago.	0	-268.919.894	-268.919.894
26-ago.	0	-242.760.489	-242.760.489
27-ago.	0	-189.546.817	-189.546.817
28-ago.	0	-133.609.074	-133.609.074
29-ago.	0	-59.904.981	-59.904.981
30-ago.	0	5.729.508	5.729.508
31-ago.	0	31.417.814	31.417.814

### Evolución existencias cuentas GTS en AASS



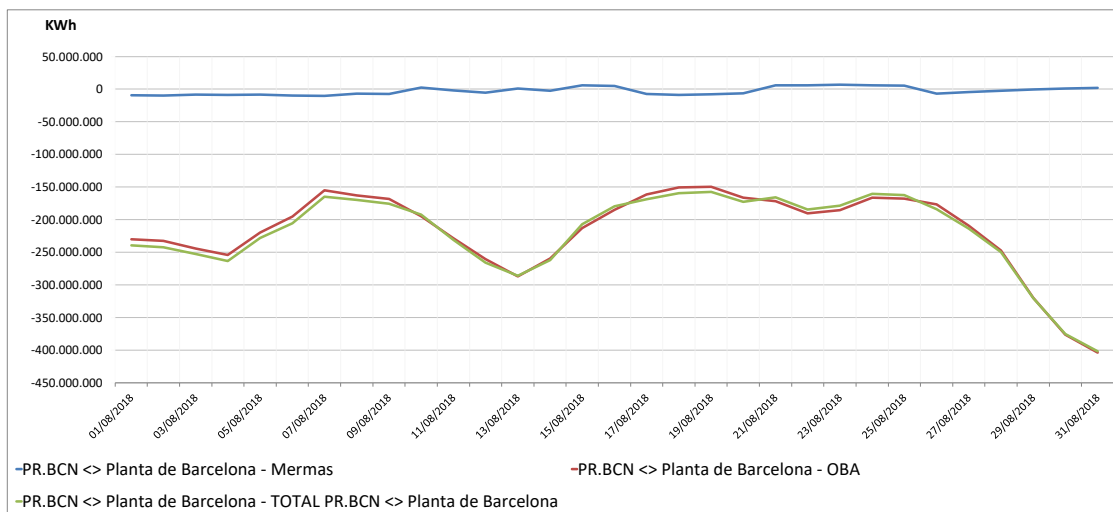
Observaciones :

# Cuentas GTS en PR Barcelona: Agosto 2018

## Seguimiento diario provisional de existencias (d+1)

Unidad: KWh			
	Mermas	OBA	TOTAL PR.BCN <> Planta de Barcelona
1-ago.	-9.521.325	-229.998.821	-239.520.146
2-ago.	-9.974.582	-232.288.414	-242.262.996
3-ago.	-8.363.218	-244.425.589	-252.788.807
4-ago.	-9.024.457	-254.158.351	-263.182.808
5-ago.	-8.518.429	-219.677.012	-228.195.441
6-ago.	-10.059.088	-195.233.117	-205.292.205
7-ago.	-10.157.669	-154.777.512	-164.935.181
8-ago.	-6.883.422	-162.719.444	-169.602.866
9-ago.	-7.550.891	-168.193.166	-175.744.057
10-ago.	2.633.795	-194.968.873	-192.335.078
11-ago.	-2.078.479	-228.759.035	-230.837.514
12-ago.	-5.514.609	-260.367.925	-265.882.534
13-ago.	1.050.581	-286.969.031	-285.918.450
14-ago.	-2.316.233	-259.454.914	-261.771.147
15-ago.	5.713.018	-212.832.022	-207.119.004
16-ago.	5.123.609	-184.794.980	-179.671.371
17-ago.	-7.243.390	-161.498.830	-168.742.220
18-ago.	-8.851.071	-150.460.284	-159.311.355
19-ago.	-7.726.952	-149.744.853	-157.471.805
20-ago.	-6.205.144	-166.227.973	-172.433.117
21-ago.	5.908.105	-171.577.480	-165.669.375
22-ago.	6.018.492	-190.296.455	-184.277.963
23-ago.	6.882.523	-185.550.456	-178.667.933
24-ago.	5.701.967	-166.254.045	-160.552.078
25-ago.	5.369.638	-167.956.427	-162.586.789
26-ago.	-6.968.514	-176.800.783	-183.769.297
27-ago.	-4.458.960	-209.311.632	-213.770.592
28-ago.	-2.631.590	-247.264.441	-249.896.031
29-ago.	-683.005	-319.827.286	-320.510.291
30-ago.	724.692	-376.050.266	-375.325.574
31-ago.	2.054.945	-403.812.323	-401.757.378

### Evolución existencias cuentas GTS en PR Barcelona



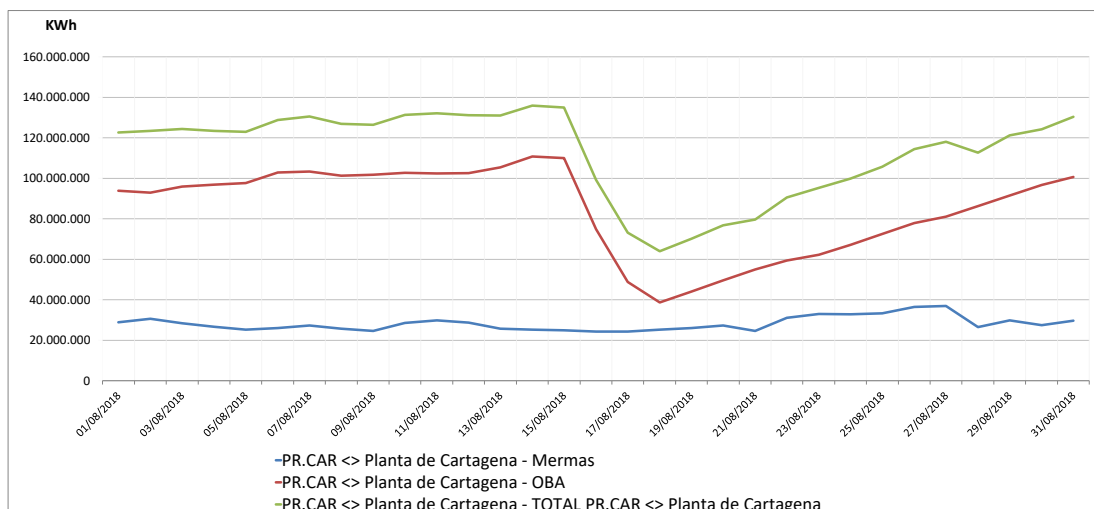
Observaciones:

# Cuentas GTS en PR Cartagena: Agosto 2018

## Seguimiento diario provisional de existencias (d+1)

Unidad: KWh			
	Mermas	OBA	TOTAL PR.CAR <> Planta de Cartagena
1-ago.	28.859.337	93.867.565	122.726.902
2-ago.	30.603.905	92.863.434	123.467.339
3-ago.	28.426.243	95.980.243	124.406.486
4-ago.	26.667.203	96.830.609	123.497.812
5-ago.	25.284.267	97.635.409	122.919.676
6-ago.	25.982.034	102.878.291	128.860.325
7-ago.	27.219.166	103.280.830	130.499.996
8-ago.	25.656.445	101.304.853	126.961.298
9-ago.	24.593.901	101.778.748	126.372.649
10-ago.	28.589.533	102.755.252	131.344.785
11-ago.	29.778.397	102.382.904	132.161.301
12-ago.	28.649.427	102.592.006	131.241.433
13-ago.	25.706.437	105.401.247	131.107.684
14-ago.	25.204.180	110.769.619	135.973.799
15-ago.	24.985.470	110.067.103	135.052.573
16-ago.	24.345.890	74.888.676	99.234.566
17-ago.	24.317.891	48.819.773	73.137.664
18-ago.	25.263.759	38.654.810	63.918.569
19-ago.	25.951.849	44.116.907	70.068.756
20-ago.	27.249.433	49.597.090	76.846.523
21-ago.	24.592.826	54.969.000	79.561.826
22-ago.	31.153.469	59.337.726	90.491.195
23-ago.	33.046.616	62.228.609	95.275.225
24-ago.	32.810.461	67.095.574	99.906.035
25-ago.	33.228.121	72.565.313	105.793.434
26-ago.	36.429.601	77.964.022	114.393.623
27-ago.	36.952.524	81.054.812	118.007.336
28-ago.	26.507.646	86.196.096	112.703.742
29-ago.	29.767.883	91.425.561	121.193.444
30-ago.	27.508.347	96.671.746	124.180.093
31-ago.	29.705.551	100.727.972	130.433.523

## Evolución existencias cuentas GTS en PR Cartagena



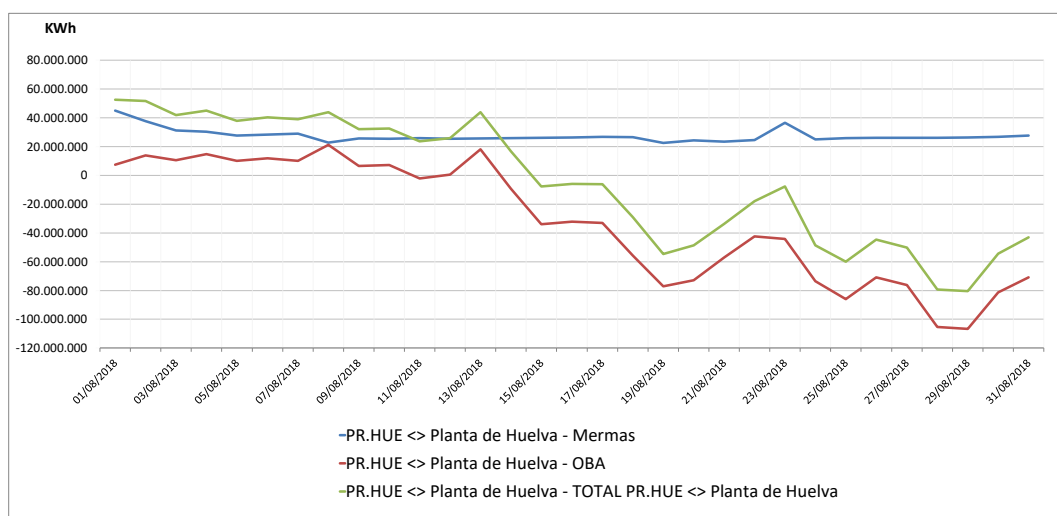
Observaciones:

# Cuentas GTS en PR Huelva: Agosto 2018

## Seguimiento diario provisional de existencias (d+1)

Unidad: KWh			
	Mermas	OBA	TOTAL PR.HUE <> Planta de Huelva
1-ago.	45.049.405	7.505.111	52.554.516
2-ago.	37.760.896	13.923.720	51.684.616
3-ago.	31.214.351	10.637.734	41.852.085
4-ago.	30.284.461	14.844.807	45.129.268
5-ago.	27.687.387	10.156.458	37.843.845
6-ago.	28.374.554	11.944.053	40.318.607
7-ago.	28.946.342	10.119.070	39.065.412
8-ago.	22.712.459	21.313.792	44.026.251
9-ago.	25.720.415	6.439.761	32.160.176
10-ago.	25.360.625	7.307.188	32.667.813
11-ago.	25.809.001	-2.134.626	23.674.375
12-ago.	25.464.989	515.022	25.980.011
13-ago.	25.731.233	18.095.458	43.826.691
14-ago.	26.016.416	-9.332.344	16.684.072
15-ago.	26.082.000	-33.880.609	-7.798.609
16-ago.	26.262.030	-32.129.888	-5.867.858
17-ago.	26.877.765	-32.980.651	-6.102.886
18-ago.	26.670.034	-55.793.495	-29.123.461
19-ago.	22.543.255	-77.104.256	-54.561.001
20-ago.	24.238.821	-72.837.036	-48.598.215
21-ago.	23.495.750	-57.132.946	-33.637.196
22-ago.	24.471.381	-42.305.552	-17.834.171
23-ago.	36.566.150	-44.228.666	-7.662.516
24-ago.	24.986.293	-73.598.093	-48.611.800
25-ago.	25.868.261	-85.927.746	-60.059.485
26-ago.	26.228.855	-70.892.034	-44.663.179
27-ago.	26.103.154	-76.304.522	-50.201.368
28-ago.	26.074.202	-105.340.837	-79.266.635
29-ago.	26.247.134	-106.707.309	-80.460.175
30-ago.	26.876.926	-81.288.191	-54.411.265
31-ago.	27.793.731	-70.937.750	-43.144.019

### Evolución existencias cuentas GTS en PR Huelva



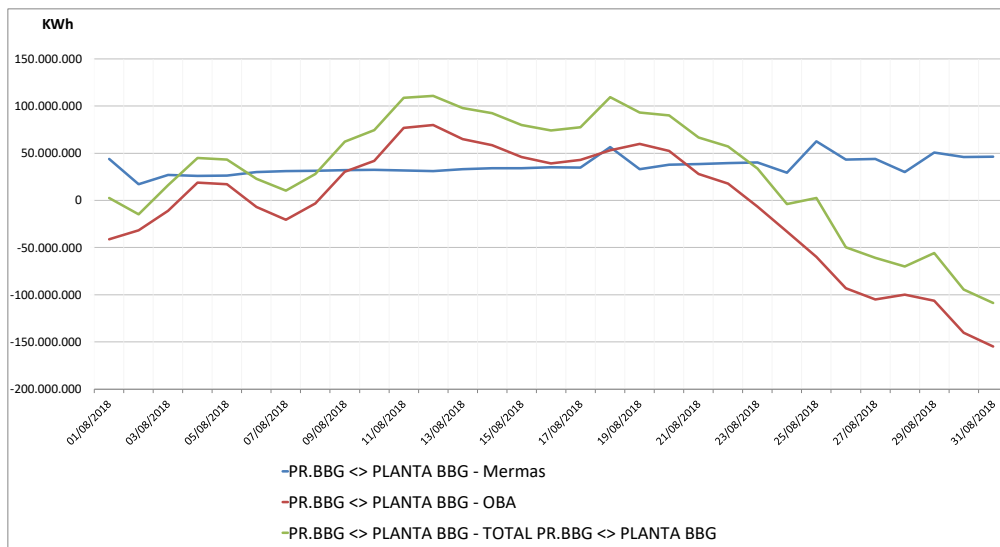
Observaciones:

# Cuentas GTS en PR Bilbao: Agosto 2018

## Seguimiento diario provisional de existencias (d+1)

Unidad: KWh			
	Mermas	OBA	TOTAL PR.BBG <> PLANTA BBG
1-ago.	43.870.706	-41.181.587	2.689.119
2-ago.	17.223.529	-31.854.354	-14.630.825
3-ago.	27.084.055	-11.052.048	16.032.007
4-ago.	26.013.174	18.822.445	44.835.619
5-ago.	26.147.119	16.955.749	43.102.868
6-ago.	30.016.514	-6.959.418	23.057.096
7-ago.	30.970.152	-20.550.289	10.419.863
8-ago.	31.489.452	-3.394.378	28.095.074
9-ago.	31.883.635	30.249.246	62.132.881
10-ago.	32.497.582	41.804.305	74.301.887
11-ago.	31.690.903	76.951.629	108.642.532
12-ago.	30.920.562	79.740.957	110.661.519
13-ago.	33.194.429	64.814.834	98.009.263
14-ago.	34.067.928	58.427.249	92.495.177
15-ago.	34.092.284	45.930.331	80.022.615
16-ago.	34.959.340	39.232.454	74.191.794
17-ago.	34.771.389	42.830.617	77.602.006
18-ago.	56.461.658	52.983.636	109.445.294
19-ago.	32.987.757	59.970.524	92.958.281
20-ago.	37.700.269	52.359.685	90.059.954
21-ago.	38.636.309	27.963.572	66.599.881
22-ago.	39.434.741	17.691.077	57.125.818
23-ago.	40.232.279	-6.474.196	33.758.083
24-ago.	29.177.853	-32.955.766	-3.777.913
25-ago.	62.641.589	-59.960.781	2.680.808
26-ago.	43.325.169	-92.961.538	-49.636.369
27-ago.	43.986.789	-104.958.501	-60.971.712
28-ago.	29.910.423	-99.949.869	-70.039.446
29-ago.	50.565.957	-106.409.801	-55.843.844
30-ago.	45.867.756	-140.348.697	-94.480.941
31-ago.	46.132.133	-154.995.112	-108.862.979

### Evolución existencias cuentas GTS en PR Bilbao

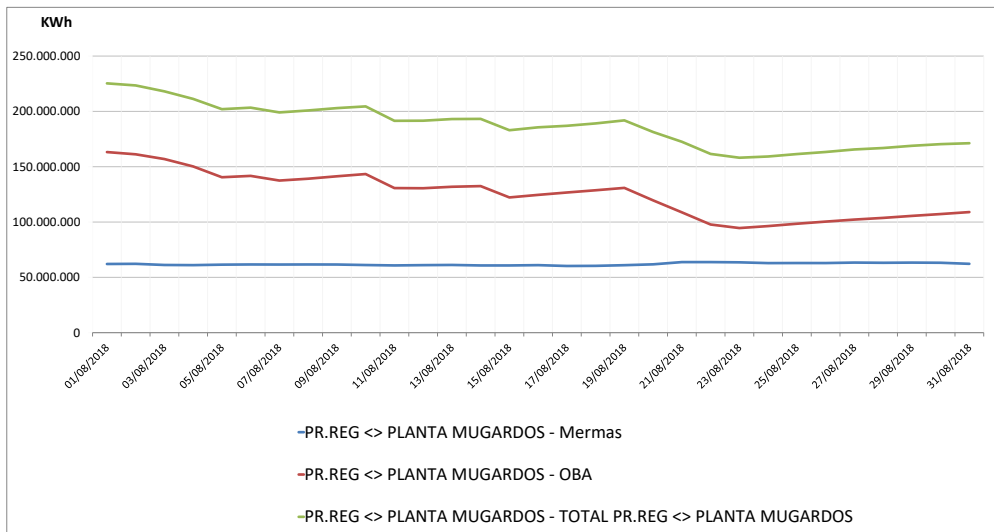


Observaciones:

## Seguimiento diario provisional de existencias (d+1)

Unidad: KWh			
	Mermas	OBA	TOTAL PR.REG <> PLANTA MUGARDOS
1-ago.	62.097.617	163.250.299	225.347.916
2-ago.	62.244.952	161.220.411	223.465.363
3-ago.	61.193.428	156.924.395	218.117.823
4-ago.	61.046.295	150.242.539	211.288.834
5-ago.	61.484.143	140.505.323	201.989.466
6-ago.	61.659.484	141.716.507	203.375.991
7-ago.	61.578.053	137.485.563	199.063.616
8-ago.	61.652.254	139.176.619	200.828.873
9-ago.	61.600.885	141.371.995	202.972.880
10-ago.	61.126.959	143.399.461	204.526.420
11-ago.	60.786.600	130.699.557	191.486.157
12-ago.	61.049.705	130.535.509	191.585.214
13-ago.	61.215.858	131.864.453	193.080.311
14-ago.	60.749.168	132.479.541	193.228.709
15-ago.	60.763.697	122.236.389	183.000.086
16-ago.	61.063.783	124.562.965	185.626.748
17-ago.	60.282.657	126.692.549	186.975.206
18-ago.	60.389.394	128.720.245	189.109.639
19-ago.	61.007.166	130.860.581	191.867.747
20-ago.	61.781.371	119.590.485	181.371.856
21-ago.	63.799.113	108.754.821	172.553.934
22-ago.	63.795.037	97.753.141	161.548.178
23-ago.	63.574.323	94.549.093	158.123.416
24-ago.	62.881.791	96.344.981	159.226.772
25-ago.	62.963.841	98.462.917	161.426.758
26-ago.	62.936.898	100.395.125	163.332.023
27-ago.	63.376.421	102.213.669	165.590.090
28-ago.	63.154.998	103.742.959	166.897.957
29-ago.	63.337.859	105.549.599	168.887.458
30-ago.	63.189.904	107.225.423	170.415.327
31-ago.	62.248.538	109.002.879	171.251.417

### Evolución existencias cuentas GTS en PR MugarDOS



Observaciones:

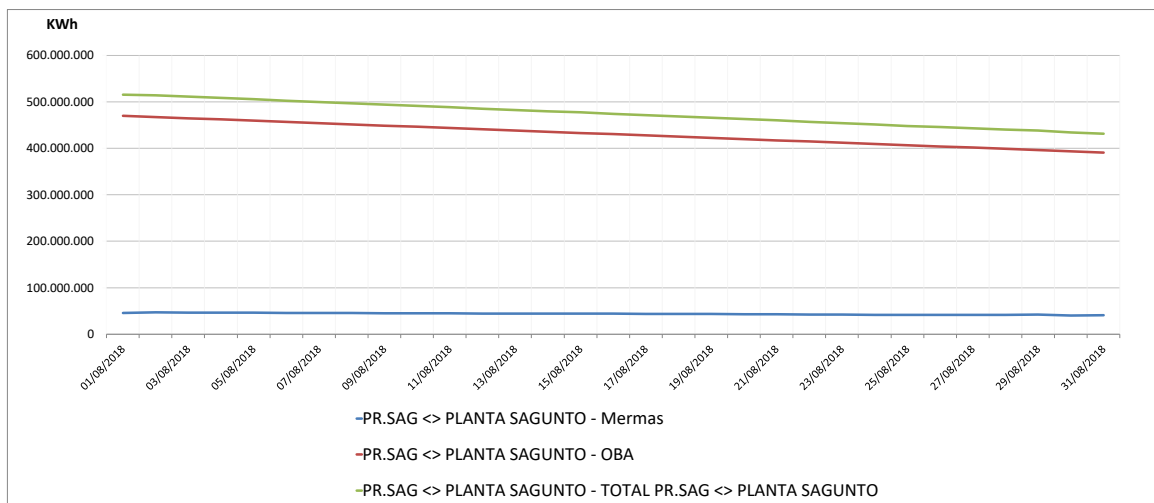


# Cuentas GTS en PR Sagunto: Agosto 2018

## Seguimiento diario provisional de existencias (d+1)

Unidad: KWh			
	Mermas	OBA	TOTAL PR.SAG <-> PLANTA SAGUNTO
1-ago.	45.253.725	470.031.145	515.284.870
2-ago.	46.616.776	467.401.587	514.018.363
3-ago.	46.452.406	464.743.677	511.196.083
4-ago.	46.345.777	462.104.775	508.450.552
5-ago.	45.958.095	459.457.166	505.415.261
6-ago.	45.802.502	456.813.973	502.616.475
7-ago.	45.585.015	454.164.572	499.749.587
8-ago.	45.307.333	451.520.931	496.828.264
9-ago.	45.005.972	448.890.282	493.896.254
10-ago.	44.804.344	446.242.929	491.047.273
11-ago.	44.594.414	443.602.488	488.196.902
12-ago.	44.358.663	440.951.999	485.310.662
13-ago.	44.237.808	438.323.654	482.561.462
14-ago.	44.164.682	435.704.845	479.869.527
15-ago.	44.275.342	433.058.260	477.333.602
16-ago.	43.939.567	430.425.947	474.365.514
17-ago.	43.541.054	427.777.954	471.319.008
18-ago.	43.316.468	425.128.297	468.444.765
19-ago.	43.377.448	422.468.464	465.845.912
20-ago.	42.946.304	419.842.039	462.788.343
21-ago.	42.785.017	417.200.766	459.985.783
22-ago.	42.413.019	414.581.509	456.994.528
23-ago.	42.116.213	411.956.940	454.073.153
24-ago.	41.718.172	409.322.387	451.040.559
25-ago.	41.484.030	406.695.514	448.179.544
26-ago.	41.512.480	404.084.897	445.597.377
27-ago.	41.355.317	401.488.488	442.843.805
28-ago.	41.261.033	398.866.351	440.127.384
29-ago.	42.047.036	396.250.806	438.297.842
30-ago.	40.392.878	393.614.205	434.007.083
31-ago.	40.545.026	390.990.212	431.535.238

## Evolución existencias cuentas GTS en PR Sagunto



Observaciones: