



**Demand assessment report
for incremental capacity
between *Enagas Transporte SAU* and
REN Gasodutos, SA
where no non-binding demand
indications were received**

2017-07-27

This report is a joint assessment of the potential for incremental capacity projects conducted by

REN Gasodutos, SA	Enagas Transporte SAU
Address: Estrada Nacional 116, Vila de Rei 2674-505 Bucelas	Address: Paseo de los Olmos 19, 28005 Madrid
	

Table of contents

A.	Non-binding Demand indications	4
B.	Demand assessment	5
i.	Historical usage pattern (optional)	5
ii.	Results of current annual yearly auction (optional)	8
iii.	Expected amount, direction and duration of demand for incremental capacity	8
C.	Conclusion for the (non)-initiation of an incremental capacity project/process	9
D.	Fees	10
E.	Contact information	11

A. Non-binding Demand indications

The involved TSOs, Enagas Transporte and REN Gasodutos, have not received any non-binding demand indications for firm capacity at the interconnection points between the entry-exit system of REN Gasodutos, and the entry-exit system of Enagas Transporte for any future period.

The following periods have been included in this analysis:

- a) non-binding demand indications received within 8 weeks after the 6 April 2017 – entry into force of REGULATION EC 459/2017.
- b) non-binding demand indications received later than 8 weeks after the 6 April 2017, which would have been considered in the current incremental capacity cycle.

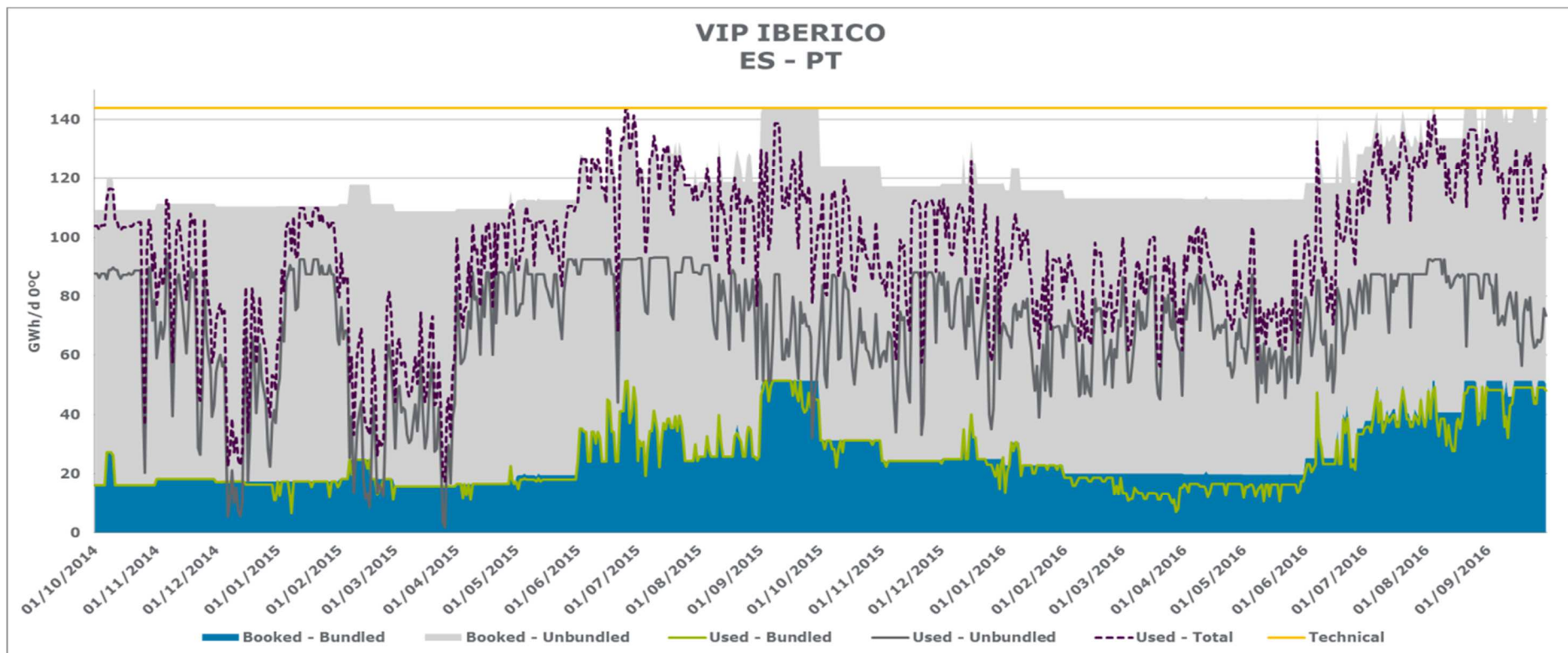
Therefore, the amount of 0 for non-binding demand indications has been used as a basis for this demand assessment.

B. Demand assessment

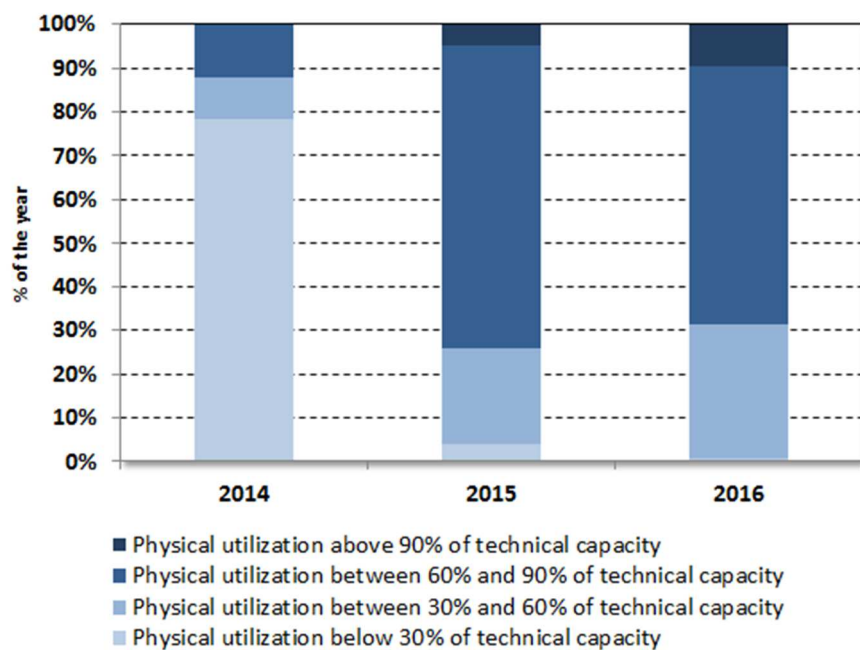
i. Historical usage pattern (optional)

The utilisation of the technical capacity is presented in the charts below by comparing the technical capacity with the booked capacity, the allocated “commercial” flow and the physical flow from October 2014 to September 2016 at the concerned interconnection point(s).

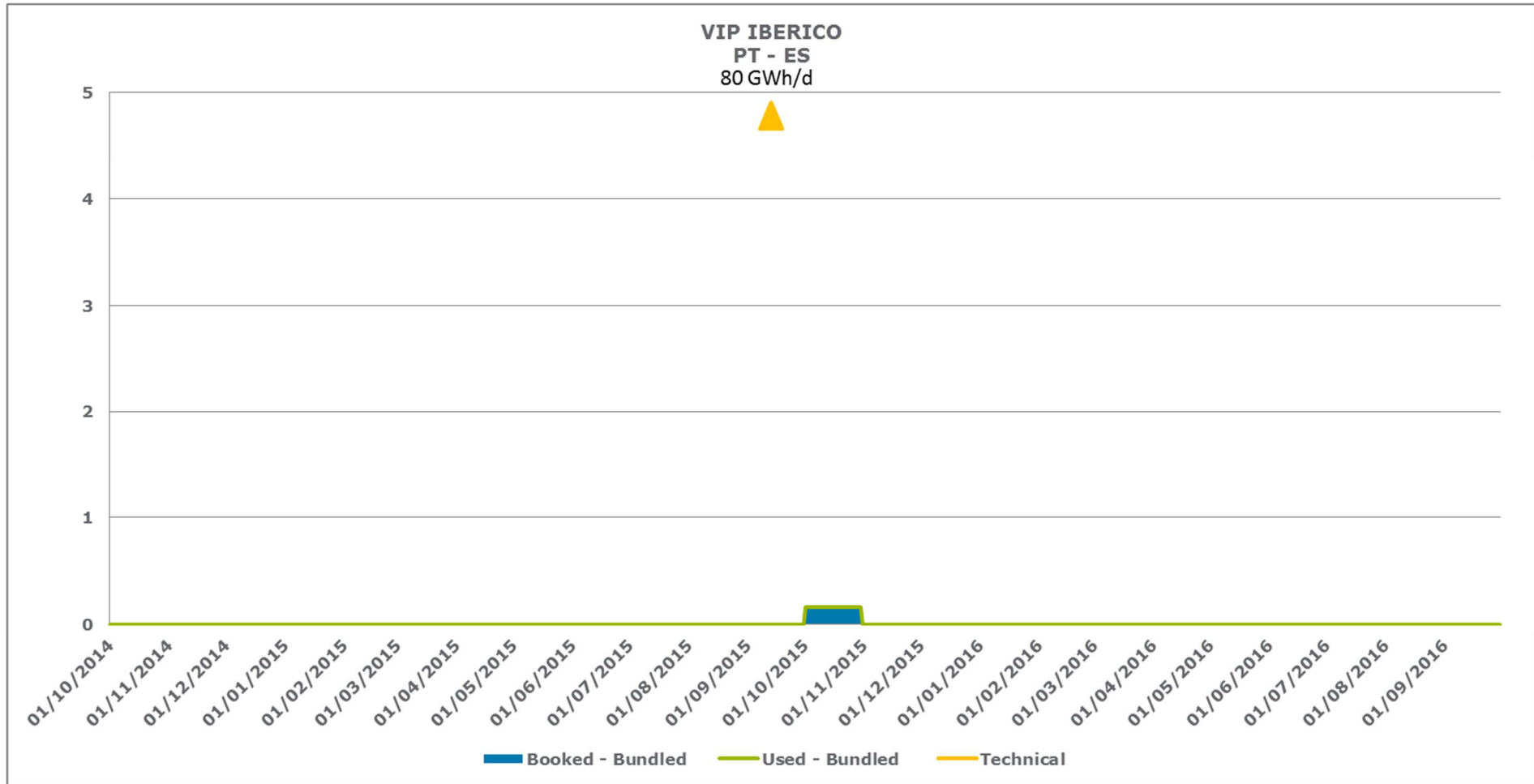
Flow Spain to Portugal:



Physical utilization rate of VIP Iberico Spain to Portugal Flow direction



Flow Portugal to Spain:



ii. Results of current annual yearly auction (optional)

In the recent annual yearly auctions, taking place on 06.03.2017 for the joint interconnection point(s) the following results have been achieved:

kWh/d 25°C

Interconnection point name	Interconnection point EIC	Flow direction	Gas year [yyyy]	Offered capacity (kWh/d 25°C) Amount	Booked capacity (kWh/d 25°C) Amount	Capacity type [e.g. firm]
VIP IBERICO	21Z000000000282J	SP – PT	2017	36.841.152	13.924.080	Firm bundled
				92.758.824	87.771.792	Firm unbundled (Portuguese side)

The equivalent unbundled capacity on the Spanish side is completely allocated based on LT contracts.

iii. Expected amount, direction and duration of demand for incremental capacity

The received demand indications within the current incremental process between the entry-exit system of Enagas Transporte and the entry-exit system of REN Gasodutos, are zero. Since (the historical usage of the concerned interconnection point(s) as well as) the potentially available capacity (i.e. technical capacity which is not yet booked) for the requested period are currently sufficient to cover the need for capacity.

C. Conclusion for the (non)-initiation of an incremental capacity project/process

According to the assessment result of the non-binding demand indications (and the historical usage patterns), which indicate that no demand levels for incremental capacity need to be developed and no incremental capacity project will be initiated.

Based on the aforementioned decision, no technical studies for incremental capacity projects will be conducted.

D. Fees

Both TSOs did not introduce a fee for the evaluation and processing of non-binding demand indications.

E. Contact information

<p>REN Gasodutos, SA</p> <p>Henrique Leite</p> <p>Studies and Energy Planning</p> <p>Email: Henrique.leite@ren.pt</p> <p>Address: Avenida Estados Unidos da América, 55</p> 	<p>Enagas Transporte</p> <p>Fatima Romero</p> <p>Logistic Commercial Department</p> <p>Telephone: +34 91709 93 03</p> <p>Email: fromeroc@enagas.es</p> <p>Address: Paseo de los Olmos 19, 28005 Madrid</p> 
---	---