



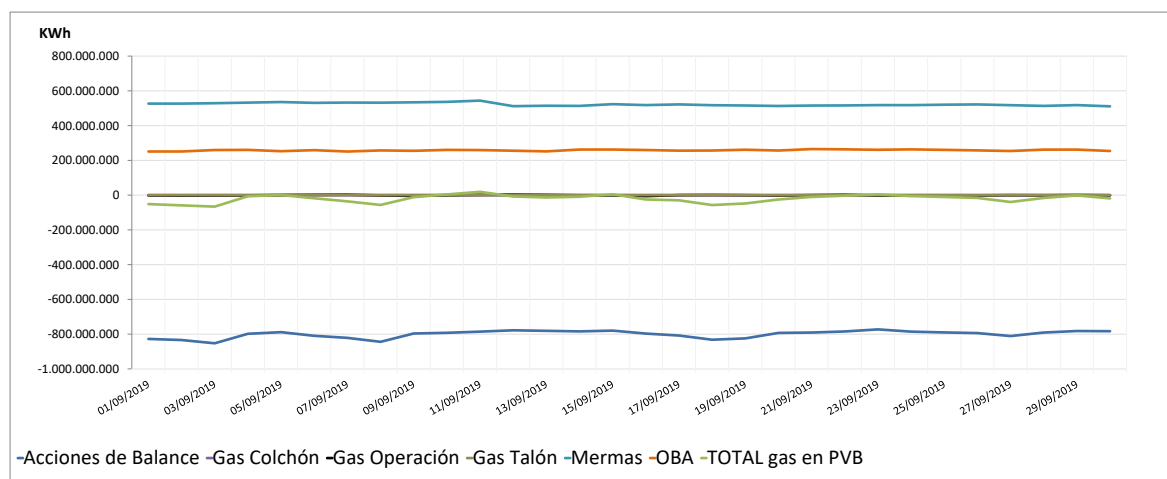
Seguimiento Cuentas del GTS

Información diaria provisional (d+1)

Seguimiento diario provisional de existencias (d+1)

Unidad:KWh	Acciones de Balance	Gas Colchón	Gas Operación	Gas Talón	Mermas	OBA	TOTAL gas en PVB
1-sep.-19	-827.691.789	0	-1.477.751	0	526.766.346	250.956.803	-51.446.391
2-sep.-19	-833.957.880	0	-2.705.840	0	526.664.917	251.101.173	-58.897.630
3-sep.-19	-852.691.695	0	-1.968.511	0	528.839.009	259.625.644	-66.195.553
4-sep.-19	-798.029.057	0	-1.466.656	0	532.452.155	260.418.071	-6.625.487
5-sep.-19	-788.579.219	0	495.163	0	535.761.807	252.841.433	519.184
6-sep.-19	-809.459.479	0	1.539.743	0	530.932.789	258.826.798	-18.160.149
7-sep.-19	-821.449.714	0	2.190.153	0	532.633.141	250.791.830	-35.834.590
8-sep.-19	-844.228.150	0	-1.611.422	0	532.085.746	257.261.291	-56.492.535
9-sep.-19	-796.298.427	0	-4.589.986	0	534.097.118	255.061.057	-11.730.238
10-sep.-19	-792.382.420	0	-618.644	0	536.659.477	260.285.474	3.943.887
11-sep.-19	-785.523.947	0	1.498.160	0	543.840.455	259.175.296	18.989.964
12-sep.-19	-777.902.358	0	2.617.497	0	511.946.704	255.469.005	-7.869.152
13-sep.-19	-780.813.925	0	1.259.512	0	514.329.637	251.748.208	-13.476.568
14-sep.-19	-784.235.834	0	-772.032	0	513.439.147	262.308.596	-9.260.123
15-sep.-19	-779.682.036	0	-1.346.912	0	523.404.416	262.373.202	4.748.670
16-sep.-19	-796.703.510	0	-5.724.549	0	517.983.043	259.564.897	-24.880.119
17-sep.-19	-807.992.767	0	60.902	0	522.065.775	255.915.034	-29.951.056
18-sep.-19	-832.093.078	0	917.196	0	517.552.412	256.584.859	-57.038.611
19-sep.-19	-824.563.379	0	-399.241	0	515.825.605	261.231.210	-47.905.805
20-sep.-19	-792.878.148	0	-1.887.503	0	512.977.507	256.587.171	-25.200.973
21-sep.-19	-790.904.993	0	-45.252	0	515.361.354	265.163.894	-10.424.997
22-sep.-19	-784.503.214	0	1.766.210	0	516.032.496	263.549.927	-3.154.581
23-sep.-19	-772.606.042	0	-2.228.893	0	517.976.235	260.895.448	4.036.748
24-sep.-19	-785.447.666	0	-1.290.448	0	517.862.866	263.261.573	-5.613.675
25-sep.-19	-790.108.099	0	-1.523.459	0	520.478.951	260.478.176	-10.674.431
26-sep.-19	-793.776.700	0	-1.565.722	0	521.829.461	257.388.936	-16.124.025
27-sep.-19	-810.997.119	0	-305.073	0	517.743.545	253.991.313	-39.567.334
28-sep.-19	-790.888.141	0	-791.618	0	513.502.985	261.834.923	-16.341.851
29-sep.-19	-781.935.906	0	290.063	0	517.956.674	261.964.587	-1.724.582
30-sep.-19	-783.109.676	0	-1.092.024	0	511.064.582	254.095.101	-19.042.017

Evolución existencias cuentas GTS en PVB



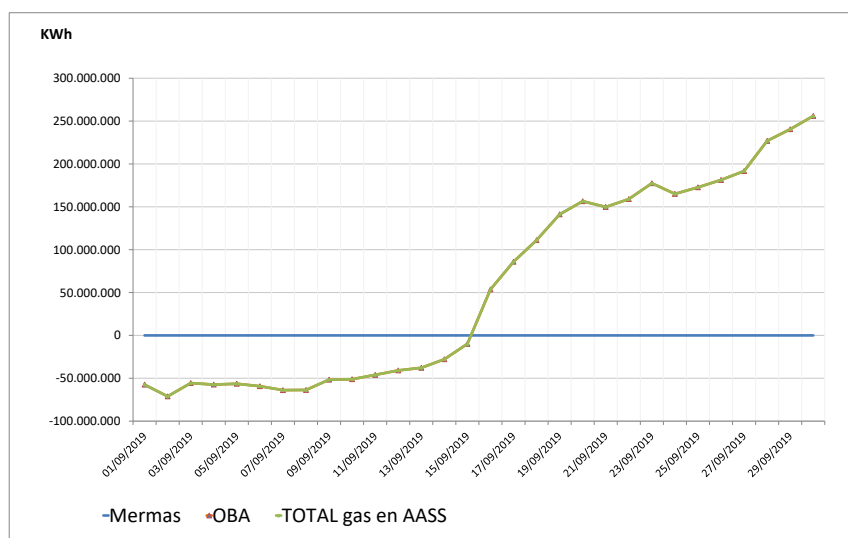
Observaciones:

Cuentas GTS en AASS: Septiembre 2019

Seguimiento diario provisional de existencias (d+1)

Unidad:KWh	Mermas	OBA	TOTAL gas en AASS
1-sep.	0	-57.456.264	-57.456.264
2-sep.	0	-71.139.789	-71.139.789
3-sep.	0	-55.628.025	-55.628.025
4-sep.	0	-57.393.410	-57.393.410
5-sep.	0	-56.395.972	-56.395.972
6-sep.	0	-59.241.845	-59.241.845
7-sep.	0	-63.846.793	-63.846.793
8-sep.	0	-63.652.546	-63.652.546
9-sep.	0	-51.664.349	-51.664.349
10-sep.	0	-51.152.327	-51.152.327
11-sep.	0	-46.057.893	-46.057.893
12-sep.	0	-40.886.189	-40.886.189
13-sep.	0	-37.806.766	-37.806.766
14-sep.	0	-27.839.225	-27.839.225
15-sep.	0	-9.898.517	-9.898.517
16-sep.	0	53.584.490	53.584.490
17-sep.	0	85.936.586	85.936.586
18-sep.	0	111.096.189	111.096.189
19-sep.	0	141.205.533	141.205.533
20-sep.	0	156.491.969	156.491.969
21-sep.	0	149.810.202	149.810.202
22-sep.	0	159.019.646	159.019.646
23-sep.	0	177.498.706	177.498.706
24-sep.	0	165.074.328	165.074.328
25-sep.	0	172.721.414	172.721.414
26-sep.	0	181.332.083	181.332.083
27-sep.	0	191.713.754	191.713.754
28-sep.	0	226.902.213	226.902.213
29-sep.	0	240.523.214	240.523.214
30-sep.	0	256.018.141	256.018.141

Evolución existencias cuentas GTS en AASS



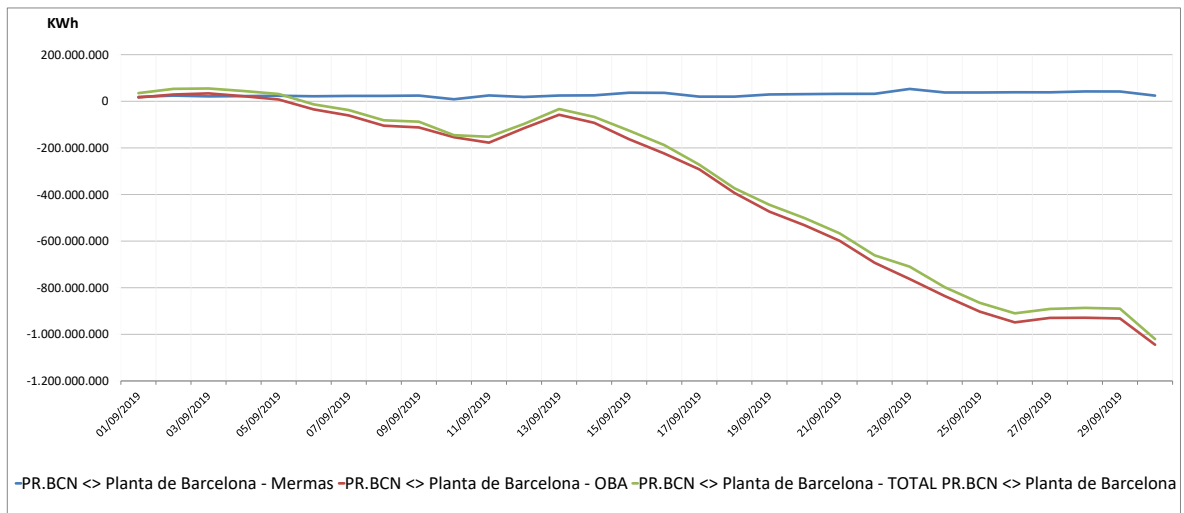
Observaciones :

Cuentas GTS en PR Barcelona: Septiembre 2019

Seguimiento diario provisional de existencias (d+1)

Unidad: KWh			
	Mermas	OBA	TOTAL PR.BCN <> Planta de Barcelona
1-sep.	18.707.478	16.225.571	34.933.049
2-sep.	24.355.956	29.028.822	53.384.778
3-sep.	21.098.028	33.832.851	54.930.879
4-sep.	22.184.176	21.802.799	43.986.975
5-sep.	23.758.182	7.679.207	31.437.389
6-sep.	21.544.125	-34.741.359	-13.197.234
7-sep.	22.948.342	-60.698.279	-37.749.937
8-sep.	23.138.236	-104.722.014	-81.583.778
9-sep.	24.590.270	-112.066.835	-87.476.565
10-sep.	8.628.653	-154.161.694	-145.533.041
11-sep.	25.078.211	-177.485.982	-152.407.771
12-sep.	18.423.249	-115.387.272	-96.964.023
13-sep.	24.629.334	-57.809.782	-33.180.448
14-sep.	25.423.472	-92.364.763	-66.941.291
15-sep.	36.789.383	-162.907.187	-126.117.804
16-sep.	36.150.865	-224.118.686	-187.967.821
17-sep.	19.830.164	-292.001.376	-272.171.212
18-sep.	19.910.758	-392.919.055	-373.008.297
19-sep.	29.336.729	-473.611.831	-444.275.102
20-sep.	30.729.590	-531.766.554	-501.036.964
21-sep.	31.929.851	-598.502.886	-566.573.035
22-sep.	32.086.330	-692.958.290	-660.871.960
23-sep.	52.971.089	-762.505.597	-709.534.508
24-sep.	37.742.102	-835.629.926	-797.887.824
25-sep.	37.756.632	-902.474.371	-864.717.739
26-sep.	38.665.513	-948.618.314	-909.952.801
27-sep.	38.459.424	-929.461.491	-891.002.067
28-sep.	42.222.803	-928.736.140	-886.513.337
29-sep.	41.960.999	-931.827.951	-889.866.952
30-sep.	24.209.415	-1.044.567.820	-1.020.358.405

Evolución existencias cuentas GTS en PR Barcelona



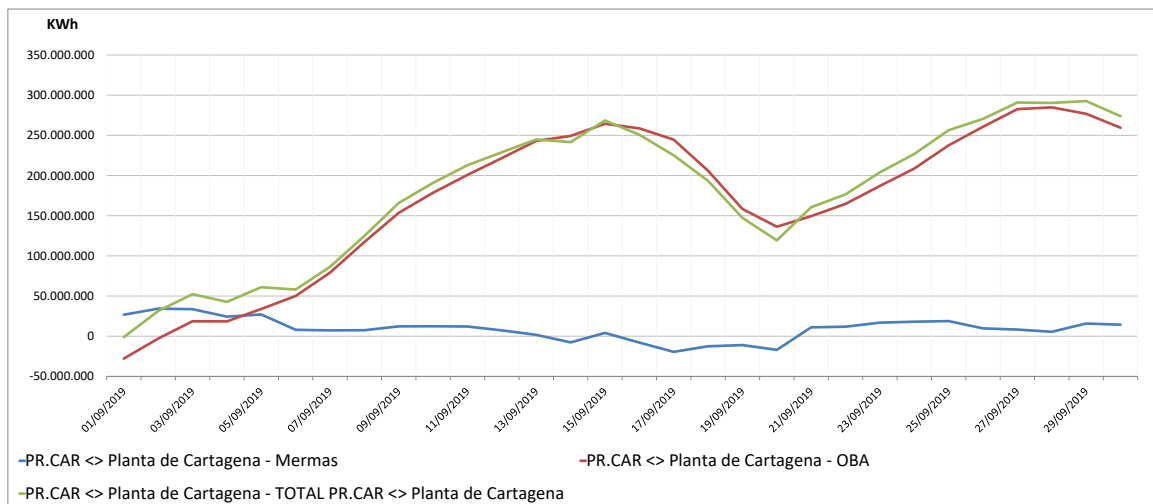
Observaciones:

Cuentas GTS en PR Cartagena: Septiembre 2019

Seguimiento diario provisional de existencias (d+1)

Unidad: KWh	Mermas	OBA	TOTAL PR.CAR <> Planta de Cartagena
1-sep.	26.734.542	-27.839.732	-1.105.190
2-sep.	34.318.885	-2.957.441	31.361.444
3-sep.	33.686.089	18.651.657	52.337.746
4-sep.	24.351.443	18.440.849	42.792.292
5-sep.	27.080.881	33.947.599	61.028.480
6-sep.	7.994.144	50.100.338	58.094.482
7-sep.	7.247.181	79.185.675	86.432.856
8-sep.	7.515.976	117.266.139	124.782.115
9-sep.	12.288.550	153.589.404	165.877.954
10-sep.	12.411.684	178.607.811	191.019.495
11-sep.	12.128.782	200.796.462	212.925.244
12-sep.	7.242.676	221.803.238	229.045.914
13-sep.	1.767.727	243.106.884	244.874.611
14-sep.	-7.669.928	249.304.203	241.634.275
15-sep.	4.135.378	264.419.399	268.554.777
16-sep.	-7.939.379	258.752.854	250.813.475
17-sep.	-19.482.996	244.667.177	225.184.181
18-sep.	-12.536.934	205.949.629	193.412.695
19-sep.	-11.040.924	158.396.815	147.355.891
20-sep.	-16.963.403	136.267.500	119.304.097
21-sep.	11.063.769	149.492.548	160.556.317
22-sep.	11.872.586	164.690.101	176.562.687
23-sep.	16.884.879	187.115.343	204.000.222
24-sep.	18.110.900	208.737.140	226.848.040
25-sep.	18.814.122	237.621.754	256.435.876
26-sep.	9.764.232	260.745.398	270.509.630
27-sep.	8.282.391	282.660.191	290.942.582
28-sep.	5.525.482	284.850.199	290.375.681
29-sep.	15.798.391	276.913.498	292.711.889
30-sep.	14.367.490	259.530.918	273.898.408

Evolución existencias cuentas GTS en PR Cartagena



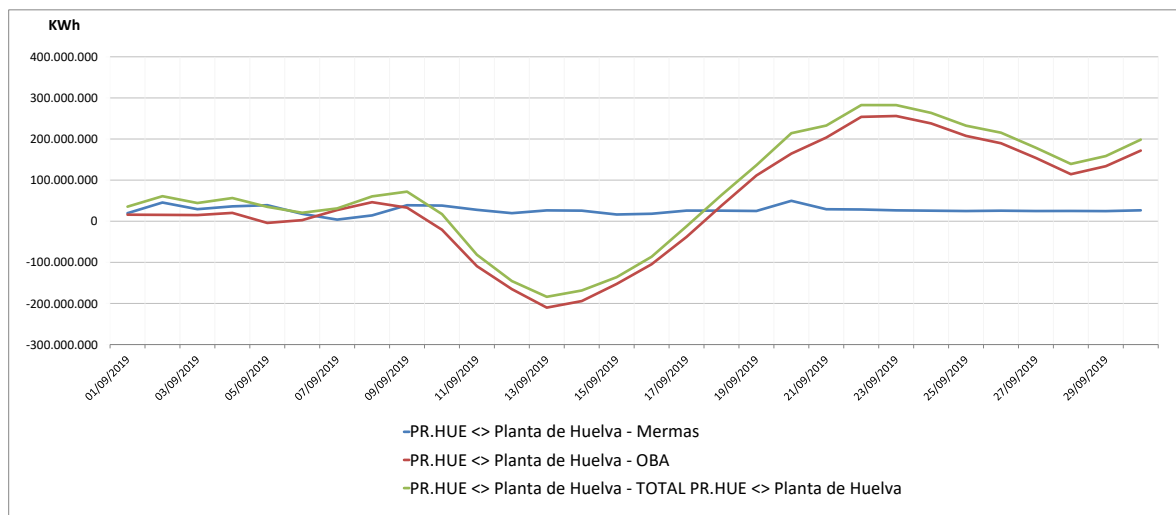
Observaciones:

Cuentas GTS en PR Huelva: Septiembre 2019

Seguimiento diario provisional de existencias (d+1)

Unidad: KWh			
	Mermas	OBA	TOTAL PR.HUE <> Planta de Huelva
1-sep.	19.555.247	15.899.687	35.454.934
2-sep.	45.476.508	15.471.161	60.947.669
3-sep.	29.304.718	14.998.401	44.303.119
4-sep.	36.132.869	20.272.432	56.405.301
5-sep.	39.025.742	-4.061.849	34.963.893
6-sep.	17.923.333	2.708.197	20.631.530
7-sep.	3.929.154	27.280.711	31.209.865
8-sep.	14.213.633	46.261.129	60.474.762
9-sep.	38.922.120	33.050.292	71.972.412
10-sep.	38.052.654	-20.738.027	17.314.627
11-sep.	27.755.316	-109.295.884	-81.540.568
12-sep.	19.694.230	-165.178.388	-145.484.158
13-sep.	26.319.392	-210.147.861	-183.828.469
14-sep.	25.739.234	-194.210.539	-168.471.305
15-sep.	16.426.034	-152.491.221	-136.065.187
16-sep.	18.206.212	-104.622.050	-86.415.838
17-sep.	25.874.749	-38.141.338	-12.266.589
18-sep.	25.763.876	37.956.624	63.720.500
19-sep.	24.926.742	111.342.688	136.269.430
20-sep.	49.673.300	164.497.250	214.170.550
21-sep.	29.156.602	203.612.286	232.768.888
22-sep.	28.610.433	253.911.407	282.521.840
23-sep.	26.469.448	256.053.768	282.523.216
24-sep.	25.637.776	237.939.732	263.577.508
25-sep.	24.828.731	207.647.616	232.476.347
26-sep.	25.668.897	189.750.914	215.419.811
27-sep.	24.793.313	153.877.776	178.671.089
28-sep.	25.037.444	114.316.911	139.354.355
29-sep.	24.618.996	133.925.997	158.544.993
30-sep.	26.577.567	171.900.015	198.477.582

Evolución existencias cuentas GTS en PR Huelva



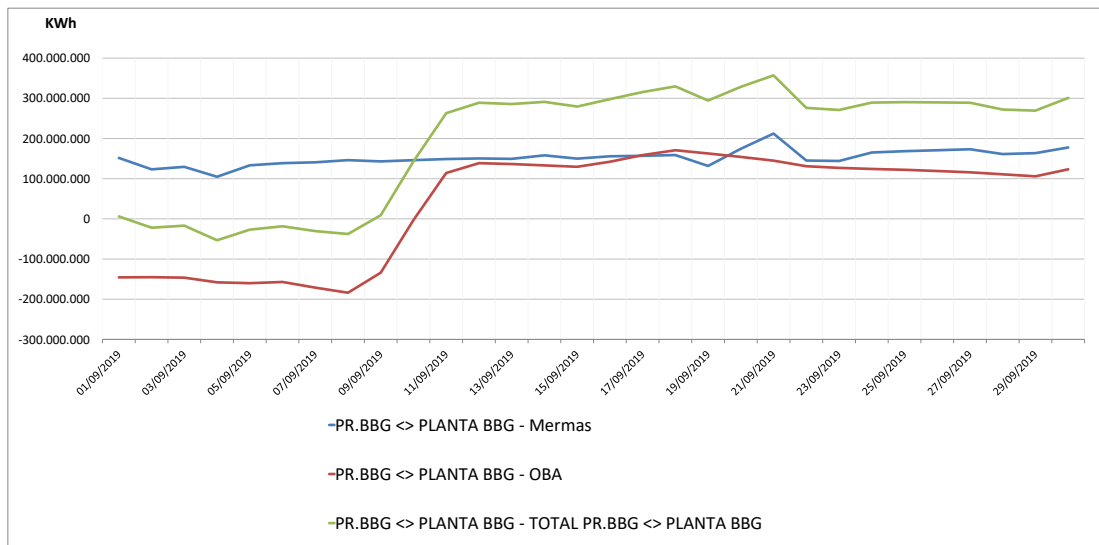
Observaciones:

Cuentas GTS en PR Bilbao: Septiembre 2019

Seguimiento diario provisional de existencias (d+1)

Unidad: KWh			
	Mermas	OBA	TOTAL PR.BBG <> PLANTA BBG
1-sep.	151.691.289	-145.634.203	6.057.086
2-sep.	123.166.463	-145.185.518	-22.019.055
3-sep.	129.453.015	-146.365.980	-16.912.965
4-sep.	104.739.212	-158.035.629	-53.296.417
5-sep.	133.221.835	-160.110.821	-26.888.986
6-sep.	138.631.749	-157.045.026	-18.413.277
7-sep.	140.703.562	-171.176.663	-30.473.101
8-sep.	146.104.456	-183.863.340	-37.758.884
9-sep.	142.990.065	-134.005.408	8.984.657
10-sep.	146.019.536	-2.976.341	143.043.195
11-sep.	148.865.501	114.137.259	263.002.760
12-sep.	150.328.162	138.616.480	288.944.642
13-sep.	149.335.199	136.417.721	285.752.920
14-sep.	158.051.581	133.066.868	291.118.449
15-sep.	149.894.294	129.567.868	279.462.162
16-sep.	155.744.140	142.177.113	297.921.253
17-sep.	156.988.579	158.616.755	315.605.334
18-sep.	158.797.147	170.843.548	329.640.695
19-sep.	131.731.750	162.697.233	294.428.983
20-sep.	174.405.186	154.204.050	328.609.236
21-sep.	212.216.895	144.845.046	357.061.941
22-sep.	145.110.446	131.000.543	276.110.989
23-sep.	144.091.410	126.885.718	270.977.128
24-sep.	165.185.099	124.208.092	289.393.191
25-sep.	168.405.943	122.055.614	290.461.557
26-sep.	170.765.303	119.108.177	289.873.480
27-sep.	173.223.569	115.833.498	289.057.067
28-sep.	161.253.545	110.821.766	272.075.311
29-sep.	163.610.084	105.794.109	269.404.193
30-sep.	177.655.509	123.350.184	301.005.693

Evolución existencias cuentas GTS en PR Bilbao

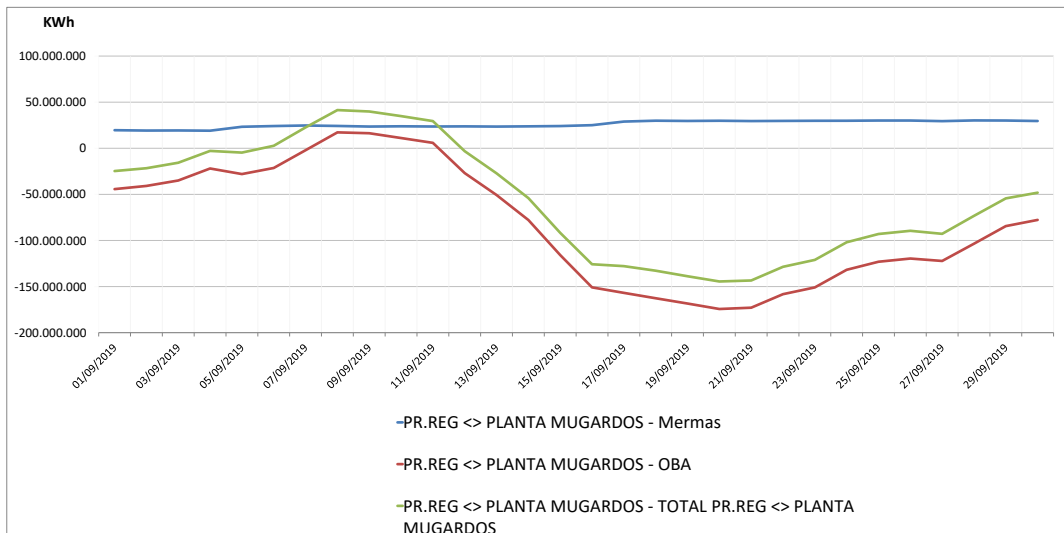


Observaciones:

Seguimiento diario provisional de existencias (d+1)

Unidad: KWh			
	Mermas	OBA	TOTAL PR.REG <> PLANTA MUGARDOS
1-sep.	19.609.637	-44.302.438	-24.692.801
2-sep.	19.205.525	-40.861.782	-21.656.257
3-sep.	19.294.690	-34.966.086	-15.671.396
4-sep.	19.065.622	-21.935.414	-2.869.792
5-sep.	23.286.191	-27.977.510	-4.691.319
6-sep.	24.086.100	-21.389.910	2.696.190
7-sep.	24.691.957	-2.092.870	22.599.087
8-sep.	24.196.832	17.236.170	41.433.002
9-sep.	23.560.463	16.339.674	39.900.137
10-sep.	23.807.093	11.103.978	34.911.071
11-sep.	23.603.005	5.884.154	29.487.159
12-sep.	23.758.712	-26.915.574	-3.156.862
13-sep.	23.495.205	-50.685.158	-27.189.953
14-sep.	23.785.302	-77.819.606	-54.034.304
15-sep.	24.101.257	-115.836.102	-91.734.845
16-sep.	25.048.078	-150.849.718	-125.801.640
17-sep.	28.976.548	-156.830.886	-127.854.338
18-sep.	29.881.801	-162.669.846	-132.788.045
19-sep.	29.605.970	-168.406.470	-138.800.500
20-sep.	29.876.320	-174.342.094	-144.465.774
21-sep.	29.508.369	-172.891.262	-143.382.893
22-sep.	29.703.488	-158.274.798	-128.571.310
23-sep.	29.832.176	-150.923.486	-121.091.310
24-sep.	29.854.402	-131.788.494	-101.934.092
25-sep.	30.057.077	-123.049.278	-92.992.201
26-sep.	30.059.841	-119.577.774	-89.517.933
27-sep.	29.421.008	-122.239.943	-92.818.935
28-sep.	30.192.055	-103.496.119	-73.304.064
29-sep.	30.076.482	-84.419.623	-54.343.141
30-sep.	29.540.414	-77.729.175	-48.188.761

Evolución existencias cuentas GTS en PR Mugardos



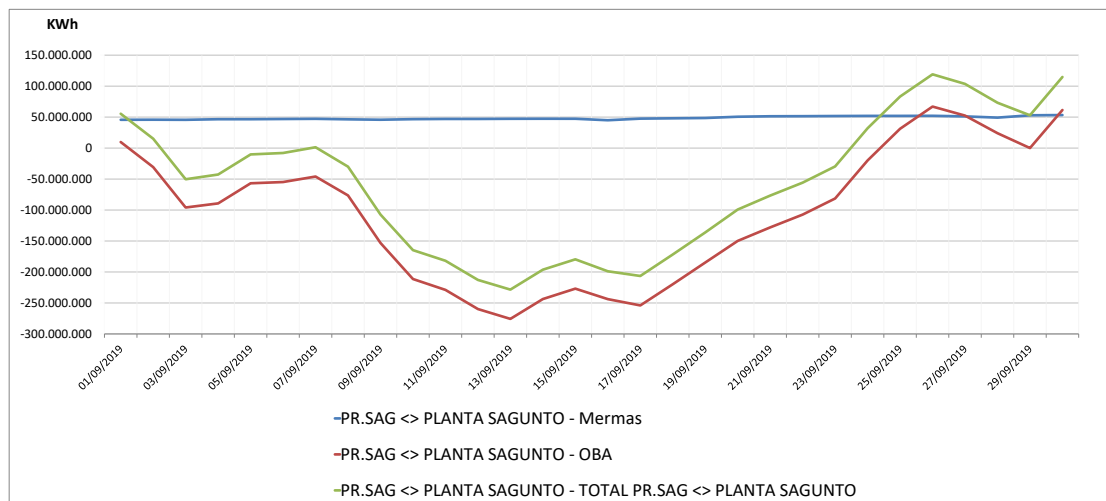
Observaciones:

Cuentas GTS en PR Sagunto: Septiembre 2019

Seguimiento diario provisional de existencias (d+1)

Unidad: KWh			
	Mermas	OBA	TOTAL PR.SAG <> PLANTA SAGUNTO
1-sep.	45.671.060	9.787.406	55.458.466
2-sep.	45.849.796	-30.702.930	15.146.866
3-sep.	45.622.917	-95.945.714	-50.322.797
4-sep.	46.603.573	-89.268.114	-42.664.541
5-sep.	46.587.715	-56.826.674	-10.238.959
6-sep.	46.921.001	-54.793.938	-7.872.937
7-sep.	47.253.667	-45.927.748	1.325.919
8-sep.	46.413.319	-76.440.436	-30.027.117
9-sep.	45.791.851	-153.108.500	-107.316.649
10-sep.	46.669.342	-211.374.004	-164.704.662
11-sep.	47.040.274	-228.944.468	-181.904.194
12-sep.	47.027.068	-259.823.508	-212.796.440
13-sep.	47.272.179	-275.723.452	-228.451.273
14-sep.	47.407.238	-243.696.515	-196.289.277
15-sep.	47.354.646	-226.922.757	-179.568.111
16-sep.	44.966.378	-243.813.541	-198.847.163
17-sep.	47.543.648	-253.978.693	-206.435.045
18-sep.	48.073.654	-219.800.549	-171.726.895
19-sep.	48.595.560	-184.765.005	-136.169.445
20-sep.	50.608.272	-149.857.773	-99.249.501
21-sep.	51.351.954	-128.034.867	-76.682.913
22-sep.	51.534.778	-107.336.921	-55.802.143
23-sep.	51.778.371	-81.376.889	-29.598.518
24-sep.	51.979.860	-19.927.577	32.052.283
25-sep.	52.005.325	31.175.239	83.180.564
26-sep.	52.075.372	66.983.591	119.058.963
27-sep.	51.168.121	52.427.527	103.595.648
28-sep.	49.191.314	24.030.777	73.222.091
29-sep.	52.924.087	41.323	52.965.410
30-sep.	53.322.794	61.441.483	114.764.277

Evolución existencias cuentas GTS en PR Sagunto



Observaciones: