



# **Seguimiento Cuentas del GTS**

## ***Monitoring of Enagás GTS accounts***

**Información diaria provisional. *Daily provisional balance information (d+1)***

### Seguimiento diario provisional existencias. *Daily provisional stocks monitoring (d+1)*

#### PVB

kWh	1-oct.	31-oct.
Acciones balance / Balancing actions	-294.571.102	-271.146.555
Gas Colchón/Cushion gas	0	0
Gas Operación/ Working gas	320.000	-67.239
Gas Talón/ Heel gas	0	0
Mermas/Shrinkages	306.655.718	261.138.374
OBA	6.920.577	1.078.815
<b>TOTAL</b>	<b>19.325.193</b>	<b>-8.996.605</b>

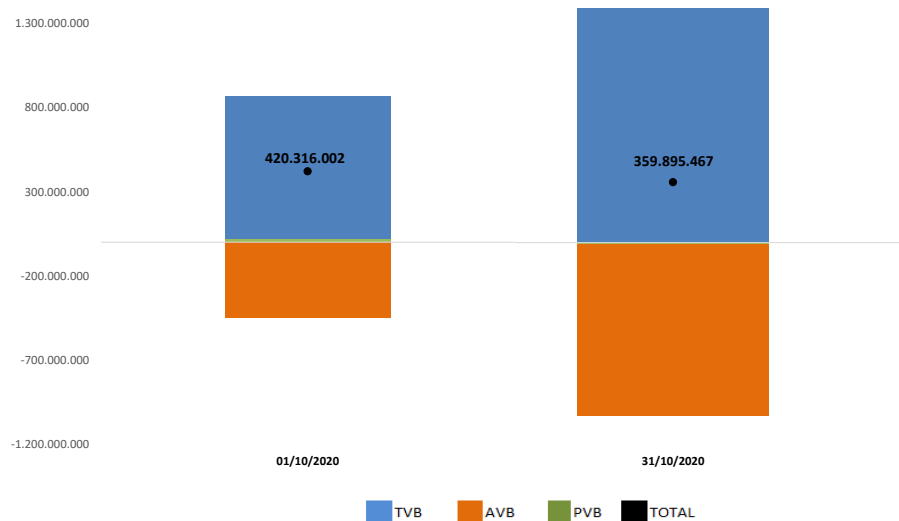
#### AVB

kWh	1-oct.	31-oct.
Imbalance AVB	3.269	3.269
Mermas/Shrinkages	36.000.001	1
OBA	-481.665.813	-1.023.364.702
<b>TOTAL</b>	<b>-445.662.543</b>	<b>-1.023.361.432</b>

#### TVB

kWh	1-oct.	31-oct.
Imbalance TVB	-3.032.842	-3.864.091
Mermas/Shrinkages	345.302.603	366.695.388
OBA	504.383.591	1.029.422.207
<b>TOTAL</b>	<b>846.653.352</b>	<b>1.392.253.504</b>

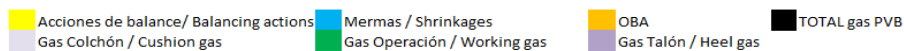
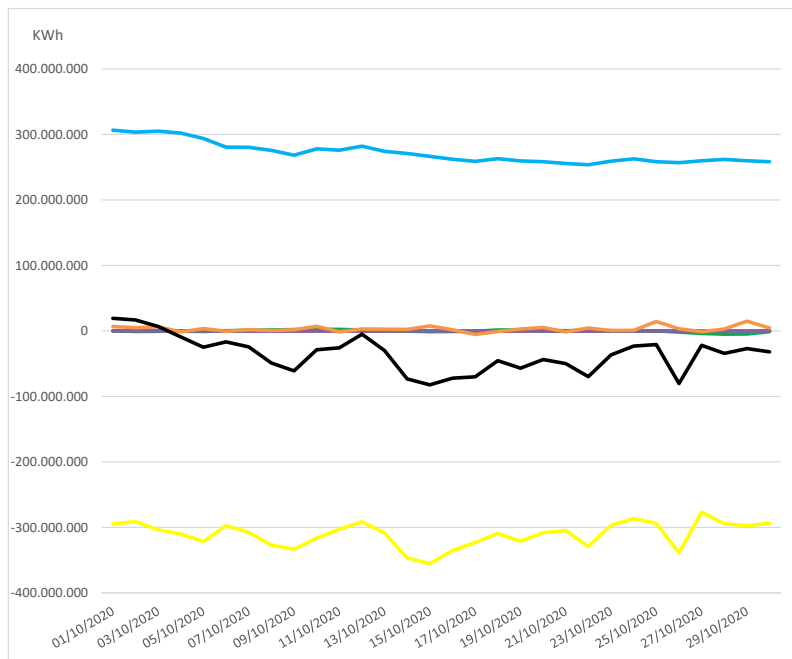
*KWh*



Observaciones / Notes

## Seguimiento diario provisional existencias. Daily provisional stocks monitoring.

kWh		Gas Colchón Cushion gas	Gas Operación Working gas	Gas Talón Heel gas	Mermas Shrinkages	OBA	TOTAL gas PVB
1-oct.	- 294.571.102	-	320.000	-	306.655.718	6.920.577	19.325.193
2-oct.	- 291.035.651	-	787.735	-	303.635.267	5.080.426	16.892.307
3-oct.	- 303.915.735	-	550.609	-	305.137.991	6.105.728	6.777.375
4-oct.	- 309.924.553	-	86.258	-	302.316.214	- 1.483.712	- 9.005.793
5-oct.	- 321.500.921	-	915.657	-	293.963.943	3.694.507	- 24.758.128
6-oct.	- 297.463.794	-	427.591	-	280.926.664	- 549.432	- 16.658.971
7-oct.	- 307.711.523	-	986.840	-	280.543.581	1.844.400	- 24.336.702
8-oct.	- 327.032.571	-	1.609.930	-	275.725.591	711.379	- 48.985.671
9-oct.	- 333.162.231	-	2.053.422	-	268.474.663	1.776.547	- 60.857.599
10-oct.	- 316.368.853	-	2.561.516	-	278.084.949	7.090.100	- 28.632.288
11-oct.	- 303.033.432	-	2.554.840	-	276.097.229	- 1.317.158	- 25.698.521
12-oct.	- 291.457.068	-	1.500.454	-	282.108.519	2.903.042	- 4.945.053
13-oct.	- 308.406.911	-	1.366.572	-	274.470.179	2.761.378	- 29.808.782
14-oct.	- 346.465.489	-	232.441	-	271.085.864	2.442.179	- 73.169.887
15-oct.	- 355.449.669	-	1.150.846	-	266.556.527	7.776.323	- 82.267.665
16-oct.	- 335.283.426	-	794.119	-	262.182.851	1.867.038	- 72.027.656
17-oct.	- 323.177.890	-	635.131	-	259.076.168	- 5.315.859	- 70.052.712
18-oct.	- 309.066.893	-	1.488.761	-	263.118.171	- 908.969	- 45.368.930
19-oct.	- 321.038.803	-	1.566.885	-	259.809.033	2.931.348	- 56.731.537
20-oct.	- 308.121.491	-	715.391	-	258.523.983	5.370.205	- 43.511.912
21-oct.	- 304.531.255	-	274.252	-	255.786.429	- 1.260.418	- 49.730.992
22-oct.	- 329.089.163	-	908.810	-	253.848.014	4.563.169	- 69.769.170
23-oct.	- 296.770.465	-	267.015	-	259.392.543	553.405	- 36.557.502
24-oct.	- 286.750.837	-	28.297	-	262.811.183	846.844	- 23.121.107
25-oct.	- 293.712.972	-	76.335	-	258.596.411	14.438.491	- 20.601.735
26-oct.	- 339.086.725	-	1.655.705	-	257.166.068	3.261.306	- 80.315.056
27-oct.	- 276.676.386	-	3.824.729	-	259.835.126	- 1.193.466	- 21.859.455
28-oct.	- 294.481.363	-	4.893.275	-	262.033.398	2.978.729	- 34.362.511
29-oct.	- 297.187.538	-	4.676.891	-	260.016.504	14.927.544	- 26.920.381
30-oct.	- 293.644.782	-	1.214.269	-	258.527.877	4.359.959	- 31.971.215
31-oct.	- 271.146.555	-	67.239	-	261.138.374	1.078.815	- 8.996.605

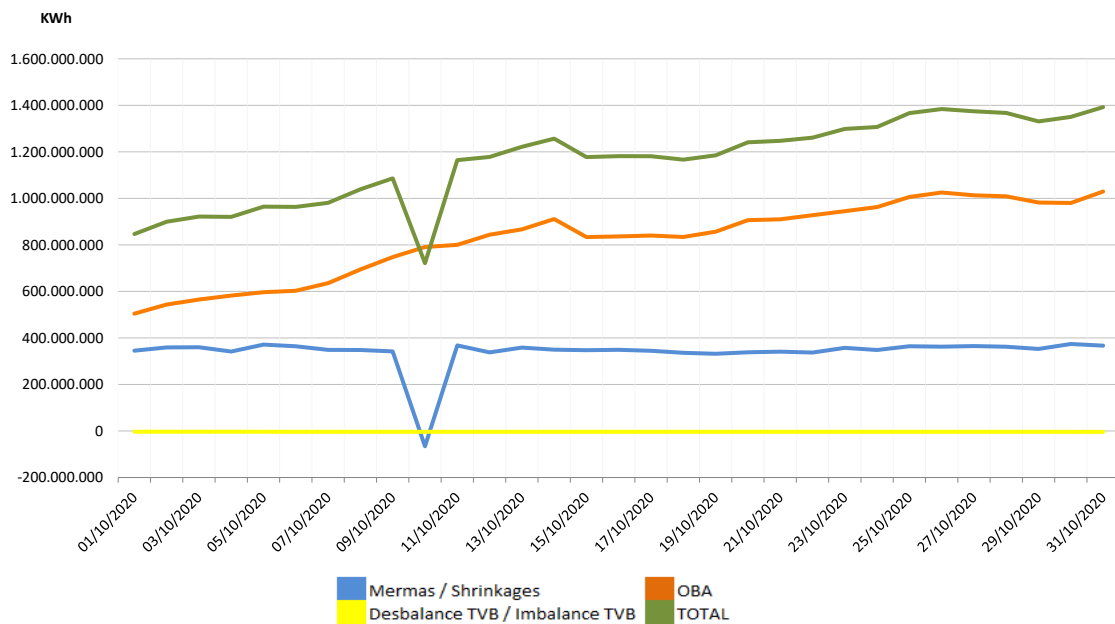


### Observaciones / Notes

## Seguimiento diario provisional existencias. Daily provisional stocks monitoring (d+1)

KWh	Mermas Shrinkages	OBA	Desbalance TVB Imbalance TVB	TOTAL
1-oct.	345.302.603	504.383.591	-3.032.842	846.653.352
2-oct.	359.214.035	543.528.589	-3.114.015	899.628.609
3-oct.	359.949.135	564.967.922	-3.131.229	921.785.828
4-oct.	341.527.980	582.096.740	-3.140.987	920.483.733
5-oct.	371.373.778	596.580.726	-3.449.401	964.505.103
6-oct.	364.127.480	602.711.960	-3.528.077	963.311.363
7-oct.	348.765.271	635.597.552	-3.543.505	980.819.318
8-oct.	348.216.003	694.406.207	-3.578.683	1.039.043.527
9-oct.	342.066.163	747.575.266	-3.614.753	1.086.026.676
10-oct.	-65.772.427	790.774.049	-3.614.753	721.386.869
11-oct.	367.814.309	800.195.981	-3.614.753	1.164.395.537
12-oct.	337.997.874	843.701.786	-3.640.848	1.178.058.812
13-oct.	358.444.530	866.811.153	-3.652.626	1.221.603.057
14-oct.	349.485.750	911.063.814	-3.655.458	1.256.894.106
15-oct.	347.380.442	833.729.748	-3.656.046	1.177.454.144
16-oct.	348.925.007	836.324.442	-3.660.216	1.181.589.233
17-oct.	344.679.884	840.230.631	-3.660.216	1.181.250.299
18-oct.	336.083.441	834.060.367	-3.660.216	1.166.483.592
19-oct.	331.928.462	856.733.833	-3.675.082	1.184.987.213
20-oct.	338.421.381	906.266.412	-3.689.091	1.240.998.702
21-oct.	341.065.766	910.015.246	-3.689.424	1.247.391.588
22-oct.	337.117.846	927.606.557	-3.695.493	1.261.028.910
23-oct.	357.379.473	944.892.348	-3.701.956	1.298.569.865
24-oct.	348.119.444	962.534.820	-3.704.739	1.306.949.525
25-oct.	364.314.193	1.005.944.304	-3.742.445	1.366.516.052
26-oct.	362.498.703	1.025.209.685	-3.742.766	1.383.965.622
27-oct.	365.024.144	1.013.148.134	-3.748.238	1.374.424.040
28-oct.	362.194.794	1.008.781.182	-3.749.290	1.367.226.686
29-oct.	352.684.331	982.017.345	-3.751.520	1.330.950.156
30-oct.	373.989.892	980.115.709	-3.864.082	1.350.241.519
31-oct.	366.695.388	1.029.422.207	-3.864.091	1.392.253.504

## Evolución existencias cuentas GTS en TVB. Progress stocks in TVB



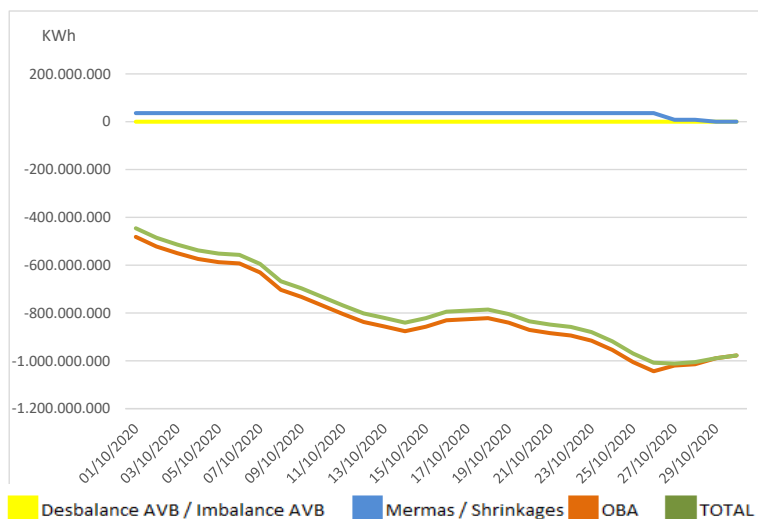
### Observaciones / Notes

10/10/2020: Valor de mermas anómalo enviado por operador. Será resuelto en el Final Provisional (m+3)

## Cuentas GTS AVB. GTS Accounts in AVB: October 2020

Seguimiento diario provisional existencias. Daily provisional stocks monitoring (d+1)

kWh	Desbalance AVB Imbalance AVB	Mermas Shrinkages	OBA	TOTAL
1-oct.	3.269	36.000.001	- 481.665.813	- 445.662.543
2-oct.	3.269	36.000.001	- 521.587.391	- 485.584.121
3-oct.	3.269	36.000.001	- 550.136.561	- 514.133.291
4-oct.	3.269	36.000.001	- 574.132.280	- 538.129.010
5-oct.	3.269	36.000.001	- 587.628.042	- 551.624.772
6-oct.	3.269	36.000.001	- 593.242.081	- 557.238.811
7-oct.	3.269	36.000.001	- 630.271.146	- 594.267.876
8-oct.	3.269	36.000.001	- 703.536.830	- 667.533.560
9-oct.	3.269	36.000.001	- 732.666.998	- 696.663.728
10-oct.	3.269	36.000.001	- 768.343.996	- 732.340.726
11-oct.	3.269	36.000.001	- 804.574.483	- 768.571.213
12-oct.	3.269	36.000.001	- 837.912.448	- 801.909.178
13-oct.	3.269	36.000.001	- 856.453.832	- 820.450.562
14-oct.	3.269	36.000.001	- 876.274.586	- 840.271.316
15-oct.	3.269	36.000.001	- 857.227.187	- 821.223.917
16-oct.	3.269	36.000.001	- 830.884.704	- 794.881.434
17-oct.	3.269	36.000.001	- 826.148.847	- 790.145.577
18-oct.	3.269	36.000.001	- 821.859.792	- 785.856.522
19-oct.	3.269	36.000.001	- 840.183.381	- 804.180.111
20-oct.	3.269	36.000.001	- 871.136.496	- 835.133.226
21-oct.	3.269	36.000.001	- 884.111.567	- 848.108.297
22-oct.	3.269	36.000.001	- 894.156.739	- 858.153.469
23-oct.	3.269	36.000.001	- 915.649.953	- 879.646.683
24-oct.	3.269	36.000.001	- 954.253.473	- 918.250.203
25-oct.	3.269	36.000.001	- 1.005.211.432	- 969.208.162
26-oct.	3.269	36.000.001	- 1.043.717.183	- 1.007.713.913
27-oct.	3.269	8.364.593	- 1.020.093.659	- 1.011.725.797
28-oct.	3.269	8.364.593	- 1.014.175.927	- 1.005.808.065
29-oct.	3.269	1	- 989.204.527	- 989.201.257
30-oct.	3.269	1	- 977.549.514	- 977.546.244
31-oct.	3.269	1	- 1.023.364.702	- 1.023.361.432



Observaciones / Notes