



Seguimiento Cuentas del GTS

Información diaria provisional (d+1)

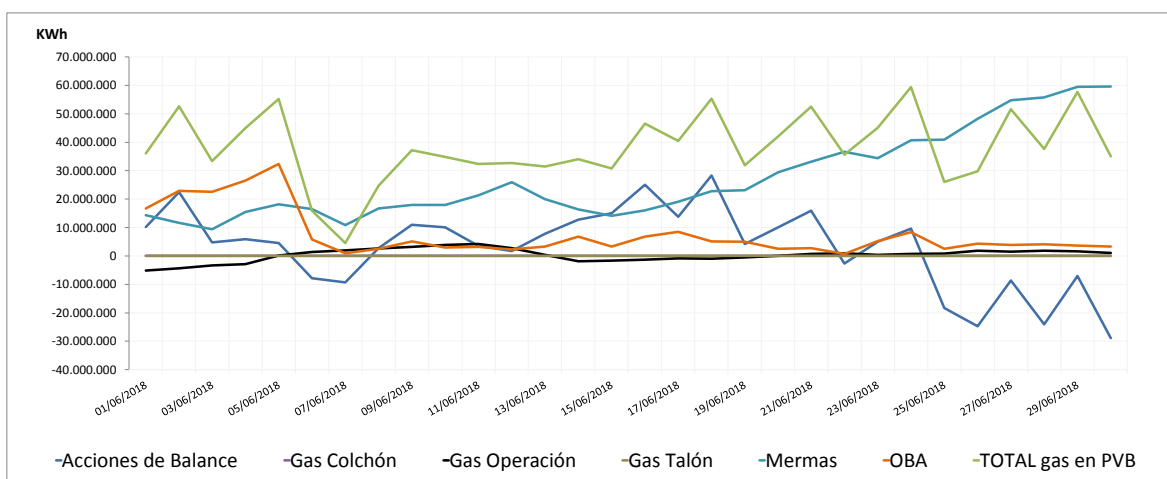
junio-18

10/08/2018

Seguimiento diario provisional de existencias (d+1)

Unidad:KWh	Acciones de Balance	Gas Colchón	Gas Operación	Gas Talón	Mermas	OBA	TOTAL gas en PVB
1-jun-18	10.172.893	0	-5.144.496	0	14.348.549	16.727.906	36.104.852
2-jun-18	22.436.302	0	-4.376.695	0	11.587.075	22.944.652	52.591.334
3-jun-18	4.749.623	0	-3.333.393	0	9.368.361	22.606.365	33.390.956
4-jun-18	5.842.652	0	-2.850.983	0	15.436.292	26.500.520	44.928.481
5-jun-18	4.513.378	0	119.428	0	18.153.419	32.395.666	55.181.891
6-jun-18	-7.793.733	0	1.399.040	0	16.483.582	5.805.270	15.894.159
7-jun-18	-9.263.717	0	2.011.583	0	10.842.205	942.196	4.532.267
8-jun-18	2.795.068	0	2.664.738	0	16.750.231	2.491.959	24.701.996
9-jun-18	10.930.171	0	3.227.067	0	17.975.126	5.068.376	37.200.740
10-jun-18	10.047.078	0	3.920.457	0	17.920.516	2.961.594	34.849.645
11-jun-18	3.574.379	0	4.247.506	0	21.293.842	3.206.092	32.321.819
12-jun-18	1.723.551	0	2.748.386	0	25.900.834	2.280.985	32.653.756
13-jun-18	7.788.756	0	335.730	0	19.959.400	3.330.232	31.414.118
14-jun-18	12.726.936	0	-1.849.602	0	16.392.316	6.806.091	34.075.741
15-jun-18	15.062.246	0	-1.688.600	0	14.142.752	3.290.874	30.807.272
16-jun-18	24.998.984	0	-1.316.615	0	16.073.874	6.797.818	46.554.061
17-jun-18	13.775.009	0	-866.508	0	19.117.206	8.464.302	40.490.009
18-jun-18	28.335.151	0	-988.230	0	22.819.184	5.120.564	55.286.669
19-jun-18	4.248.133	0	-494.344	0	23.147.585	5.005.329	31.906.703
20-jun-18	10.036.965	0	39.804	0	29.460.904	2.547.054	42.084.727
21-jun-18	15.860.107	0	681.581	0	33.189.313	2.767.032	52.498.033
22-jun-18	-2.680.464	0	991.814	0	36.636.156	681.198	35.628.704
23-jun-18	5.047.659	0	412.773	0	34.398.251	5.223.451	45.082.134
24-jun-18	9.637.929	0	711.350	0	40.715.405	8.341.845	59.406.529
25-jun-18	-18.310.479	0	816.055	0	40.916.797	2.577.519	25.999.892
26-jun-18	-24.668.917	0	1.819.990	0	48.260.763	4.296.588	29.708.424
27-jun-18	-8.637.574	0	1.489.226	0	54.790.534	3.903.610	51.545.796
28-jun-18	-24.004.679	0	1.826.191	0	55.737.336	4.044.597	37.603.445
29-jun-18	-7.037.617	0	1.614.242	0	59.486.948	3.621.357	57.684.930
30-jun-18	-28.936.119	0	1.015.153	0	59.613.580	3.339.535	35.032.149

Evolución existencias cuentas GTS en PVB



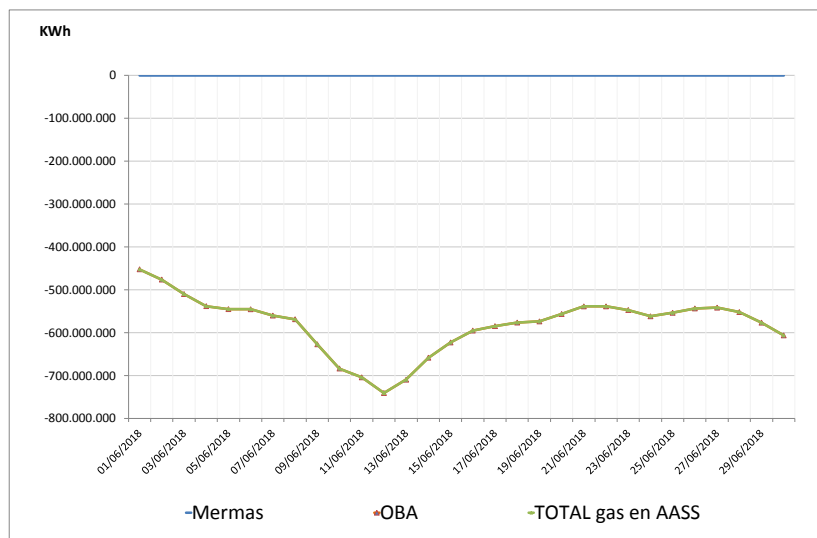
Observaciones:

Cuentas GTS en AASS: Junio 2018

Seguimiento diario provisional de existencias (d+1)

Unidad:KWh	Mermas	OBA	TOTAL gas en AASS
1-jun	0	-452.382.028	-452.382.028
2-jun	0	-476.364.337	-476.364.337
3-jun	0	-510.133.153	-510.133.153
4-jun	0	-538.329.755	-538.329.755
5-jun	0	-545.280.583	-545.280.583
6-jun	0	-545.591.861	-545.591.861
7-jun	0	-560.333.482	-560.333.482
8-jun	0	-568.857.641	-568.857.641
9-jun	0	-627.350.564	-627.350.564
10-jun	0	-683.847.797	-683.847.797
11-jun	0	-704.481.812	-704.481.812
12-jun	0	-740.916.699	-740.916.699
13-jun	0	-709.866.481	-709.866.481
14-jun	0	-658.598.153	-658.598.153
15-jun	0	-623.050.557	-623.050.557
16-jun	0	-595.310.375	-595.310.375
17-jun	0	-584.897.713	-584.897.713
18-jun	0	-576.667.185	-576.667.185
19-jun	0	-573.914.104	-573.914.104
20-jun	0	-556.728.209	-556.728.209
21-jun	0	-538.912.802	-538.912.802
22-jun	0	-538.840.619	-538.840.619
23-jun	0	-547.367.480	-547.367.480
24-jun	0	-561.979.627	-561.979.627
25-jun	0	-553.816.747	-553.816.747
26-jun	0	-543.726.690	-543.726.690
27-jun	0	-541.833.361	-541.833.361
28-jun	0	-552.157.383	-552.157.383
29-jun	0	-576.895.930	-576.895.930
30-jun	0	-606.582.600	-606.582.600

Evolución existencias cuentas GTS en AASS



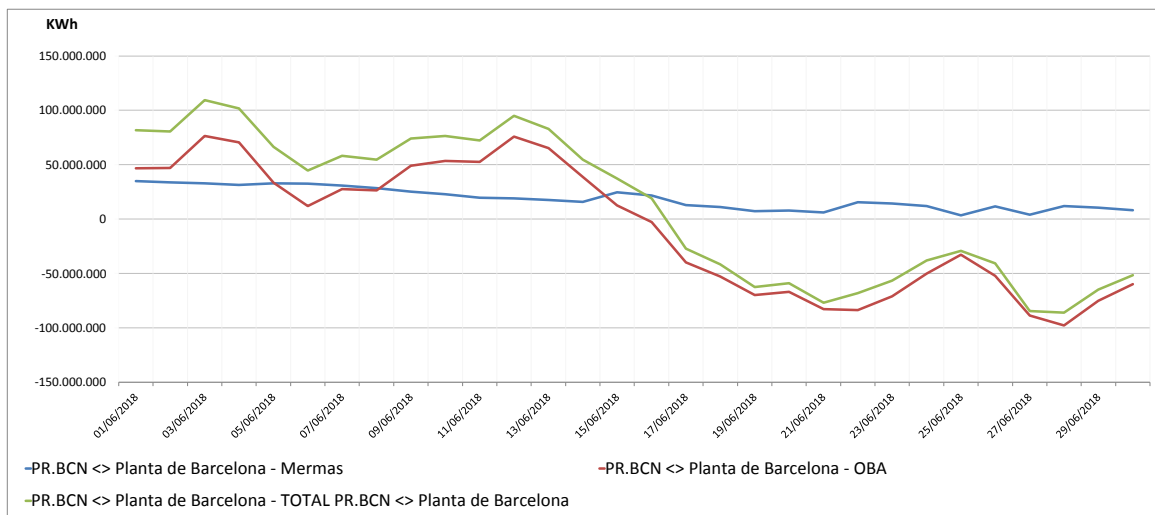
Observaciones :

Cuentas GTS en PR Barcelona: Junio 2018

Seguimiento diario provisional de existencias (d+1)

Unidad: KWh			
	Mermas	OBA	TOTAL PR.BCN <> Planta de Barcelona
1-jun	34.853.417	46.753.316	81.606.733
2-jun	33.741.422	46.895.841	80.637.263
3-jun	32.788.531	76.514.823	109.303.354
4-jun	31.388.401	70.432.994	101.821.395
5-jun	32.974.043	33.554.525	66.528.568
6-jun	32.616.371	11.910.106	44.526.477
7-jun	30.743.458	27.578.964	58.322.422
8-jun	28.334.753	26.386.013	54.720.766
9-jun	25.146.733	49.047.772	74.194.505
10-jun	22.854.421	53.493.445	76.347.866
11-jun	19.621.228	52.629.061	72.250.289
12-jun	19.133.780	75.782.398	94.916.178
13-jun	17.485.030	65.333.924	82.818.954
14-jun	15.894.224	38.725.137	54.619.361
15-jun	24.707.300	12.509.040	37.216.340
16-jun	21.806.490	-2.769.044	19.037.446
17-jun	12.798.646	-39.882.143	-27.083.497
18-jun	11.086.750	-52.786.452	-41.699.702
19-jun	7.211.507	-69.823.988	-62.612.481
20-jun	7.863.929	-66.856.210	-58.992.281
21-jun	6.006.483	-82.918.985	-76.912.502
22-jun	15.587.777	-83.565.861	-67.978.084
23-jun	14.430.620	-71.069.295	-56.638.675
24-jun	12.106.460	-50.058.684	-37.952.224
25-jun	3.333.233	-32.657.738	-29.324.505
26-jun	11.570.216	-52.152.594	-40.582.378
27-jun	4.152.390	-88.760.345	-84.607.955
28-jun	11.841.172	-97.731.318	-85.890.146
29-jun	10.389.199	-75.237.585	-64.848.386
30-jun	8.217.263	-59.842.525	-51.625.262

Evolución existencias cuentas GTS en PR Barcelona



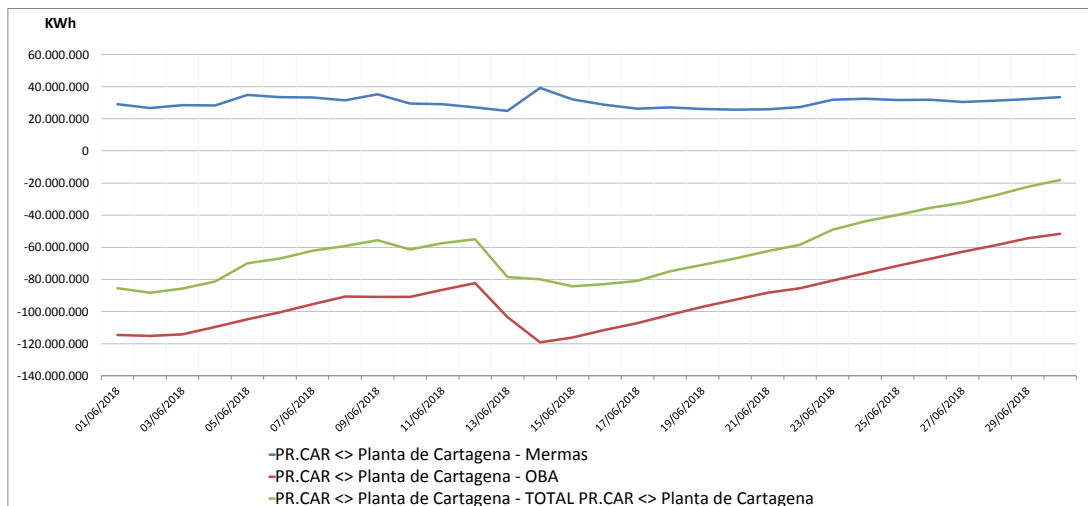
Observaciones:

Cuentas GTS en PR Cartagena: Junio 2018

Seguimiento diario provisional de existencias (d+1)

Unidad: KWh			
	Mermas	OBA	TOTAL PR.CAR <> Planta de Cartagena
1-jun	29.092.852	-114.536.153	-85.443.301
2-jun	26.769.842	-115.075.961	-88.306.119
3-jun	28.520.521	-114.241.432	-85.720.911
4-jun	28.310.641	-109.514.791	-81.204.150
5-jun	34.847.686	-104.794.173	-69.946.487
6-jun	33.504.261	-100.433.337	-66.929.076
7-jun	33.254.467	-95.463.598	-62.209.131
8-jun	31.471.917	-90.567.030	-59.095.113
9-jun	35.249.597	-90.762.387	-55.512.790
10-jun	29.485.413	-90.826.793	-61.341.380
11-jun	29.106.037	-86.484.468	-57.378.431
12-jun	27.148.216	-82.224.603	-55.076.387
13-jun	24.922.132	-103.431.266	-78.509.134
14-jun	39.304.144	-119.138.351	-79.834.207
15-jun	32.021.023	-116.210.141	-84.189.118
16-jun	28.619.869	-111.434.881	-82.815.012
17-jun	26.332.830	-107.202.694	-80.869.864
18-jun	27.115.957	-102.017.164	-74.901.207
19-jun	26.142.651	-97.087.870	-70.945.219
20-jun	25.687.937	-92.603.591	-66.915.654
21-jun	25.967.689	-88.239.777	-62.272.088
22-jun	27.187.411	-85.560.810	-58.373.399
23-jun	31.770.219	-80.691.870	-48.921.651
24-jun	32.416.082	-76.195.266	-43.779.184
25-jun	31.650.492	-71.604.918	-39.954.426
26-jun	31.788.316	-67.212.559	-35.424.243
27-jun	30.516.979	-62.829.321	-32.312.342
28-jun	31.210.959	-58.822.704	-27.611.745
29-jun	32.186.973	-54.459.254	-22.272.281
30-jun	33.460.464	-51.570.918	-18.110.454

Evolución existencias cuentas GTS en PR Cartagena

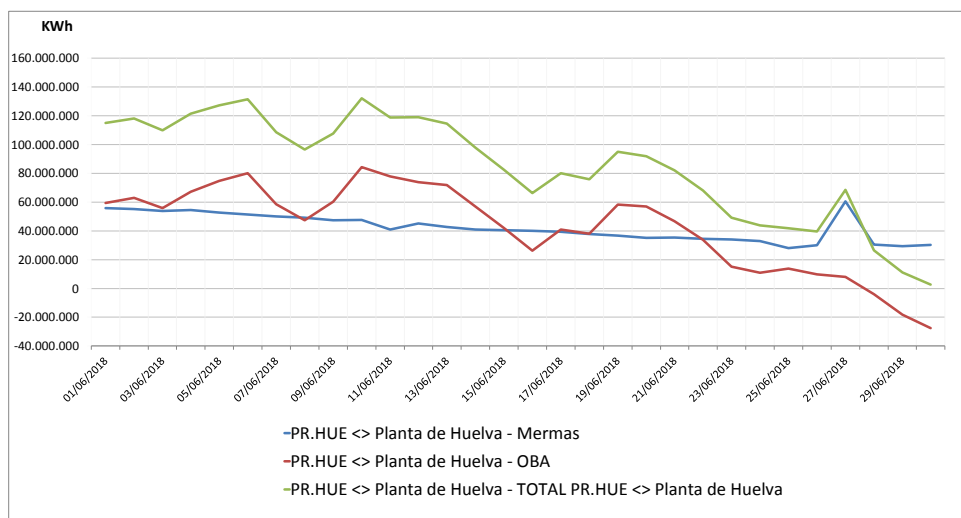


Observaciones:

Seguimiento diario provisional de existencias (d+1)

Unidad: KWh			
	Mermas	OBA	TOTAL PR.HUE <> Planta de Huelva
1-jun	55.782.866	59.320.771	115.103.637
2-jun	55.123.131	62.954.086	118.077.217
3-jun	53.913.497	55.944.845	109.858.342
4-jun	54.406.080	67.121.264	121.527.344
5-jun	52.697.476	74.654.601	127.352.077
6-jun	51.324.082	80.089.656	131.413.738
7-jun	50.172.158	58.458.231	108.630.389
8-jun	49.135.493	47.345.907	96.481.400
9-jun	47.284.216	60.324.911	107.609.127
10-jun	47.718.230	84.415.899	132.134.129
11-jun	40.951.850	77.787.914	118.739.764
12-jun	45.154.662	73.841.631	118.996.293
13-jun	42.724.707	71.953.624	114.678.331
14-jun	40.913.212	57.057.919	97.971.131
15-jun	40.464.051	42.084.238	82.548.289
16-jun	40.014.339	26.268.389	66.282.728
17-jun	39.284.516	40.880.120	80.164.636
18-jun	37.782.727	38.017.774	75.800.501
19-jun	36.693.858	58.216.606	94.910.464
20-jun	35.087.366	56.898.835	91.986.201
21-jun	35.423.804	46.685.205	82.109.009
22-jun	34.445.937	33.737.644	68.183.581
23-jun	34.042.221	15.046.520	49.088.741
24-jun	32.949.058	10.873.828	43.822.886
25-jun	28.023.042	13.715.556	41.738.598
26-jun	29.935.119	9.684.526	39.619.645
27-jun	60.464.673	8.025.061	68.489.734
28-jun	30.476.444	-3.994.844	26.481.600
29-jun	29.337.055	-18.159.399	11.177.656
30-jun	30.160.858	-27.514.104	2.646.754

Evolución existencias cuentas GTS en PR Huelva



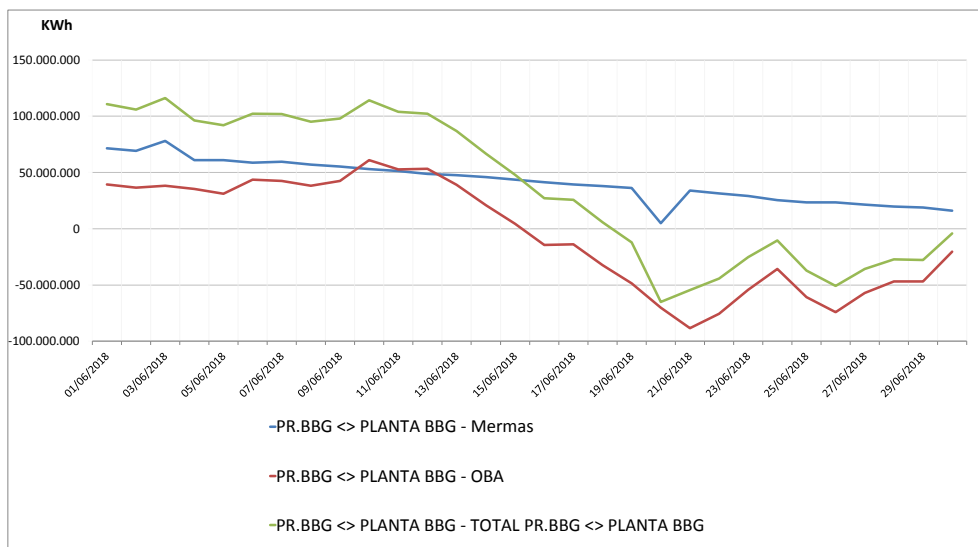
Observaciones:

Cuentas GTS en PR Bilbao: Junio 2018

Seguimiento diario provisional de existencias (d+1)

Unidad: KWh			
	Mermas	OBA	TOTAL PR.BBG <> PLANTA BBG
1-jun	71.398.071	39.347.654	110.745.725
2-jun	69.296.649	36.541.614	105.838.263
3-jun	77.980.979	38.220.529	116.201.508
4-jun	60.935.003	35.450.674	96.385.677
5-jun	61.062.827	31.013.281	92.076.108
6-jun	58.611.414	43.688.441	102.299.855
7-jun	59.531.780	42.423.259	101.955.039
8-jun	56.976.923	38.211.333	95.188.256
9-jun	55.428.106	42.655.600	98.083.706
10-jun	53.145.784	61.140.325	114.286.109
11-jun	51.299.265	52.721.402	104.020.667
12-jun	48.764.371	53.418.733	102.183.104
13-jun	47.589.555	39.179.122	86.768.677
14-jun	45.793.999	20.845.344	66.639.343
15-jun	43.559.927	4.291.717	47.851.644
16-jun	41.484.896	-14.469.871	27.015.025
17-jun	39.419.660	-13.697.568	25.722.092
18-jun	38.028.772	-32.216.054	5.812.718
19-jun	36.355.177	-48.525.914	-12.170.737
20-jun	5.065.198	-70.045.716	-64.980.518
21-jun	34.067.861	-88.437.865	-54.370.004
22-jun	31.479.211	-75.689.105	-44.209.894
23-jun	29.139.028	-54.263.542	-25.124.514
24-jun	25.483.698	-35.790.536	-10.306.838
25-jun	23.499.036	-60.653.019	-37.153.983
26-jun	23.372.808	-74.082.740	-50.709.932
27-jun	21.340.401	-57.145.393	-35.804.992
28-jun	19.636.740	-46.790.004	-27.153.264
29-jun	19.006.870	-46.734.222	-27.727.352
30-jun	16.175.171	-20.275.256	-4.100.085

Evolución existencias cuentas GTS en PR Bilbao



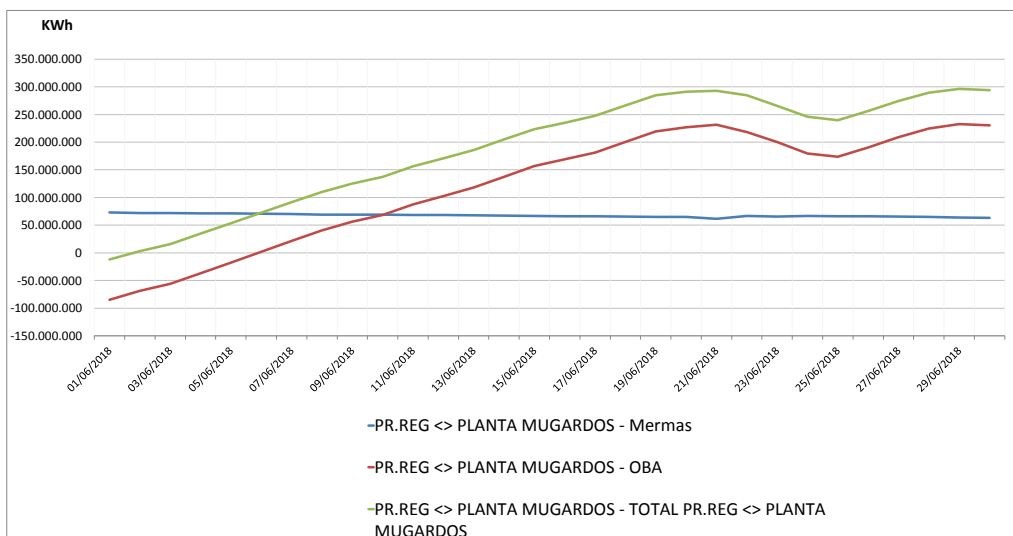
Observaciones:

Cuentas GTS en PR MugarDOS: Junio 2018

Seguimiento diario provisional de existencias (d+1)

Unidad: KWh			
	Mermas	OBA	TOTAL PR.REG <> PLANTA MUGARDOS
1-jun	72.935.113	-84.827.483	-11.892.370
2-jun	71.926.443	-68.948.964	2.977.479
3-jun	71.964.627	-56.258.861	15.705.766
4-jun	71.536.837	-36.936.694	34.600.143
5-jun	71.171.651	-17.557.183	53.614.468
6-jun	70.921.065	1.781.368	72.702.433
7-jun	70.077.386	21.353.391	91.430.777
8-jun	69.248.543	40.569.062	109.817.605
9-jun	69.218.721	55.972.445	125.191.166
10-jun	68.952.248	68.429.076	137.381.324
11-jun	68.626.485	87.525.963	156.152.448
12-jun	68.273.768	102.598.274	170.872.042
13-jun	67.897.189	118.096.569	185.993.758
14-jun	67.489.141	137.447.408	204.936.549
15-jun	66.722.006	156.650.791	223.372.797
16-jun	66.084.222	168.894.430	234.978.652
17-jun	66.227.968	181.441.173	247.669.141
18-jun	65.755.526	200.550.620	266.306.146
19-jun	65.162.080	219.479.331	284.641.411
20-jun	64.633.609	226.725.674	291.359.283
21-jun	61.416.633	231.510.929	292.927.562
22-jun	66.599.385	218.255.224	284.854.609
23-jun	65.504.933	200.429.759	265.934.692
24-jun	66.535.574	179.590.726	246.126.300
25-jun	66.197.273	173.607.181	239.804.454
26-jun	65.960.341	190.501.188	256.461.529
27-jun	65.402.735	208.939.387	274.342.122
28-jun	64.925.164	224.314.258	289.239.422
29-jun	63.952.392	232.423.257	296.375.649
30-jun	63.353.989	230.406.977	293.760.966

Evolución existencias cuentas GTS en PR MugarDOS



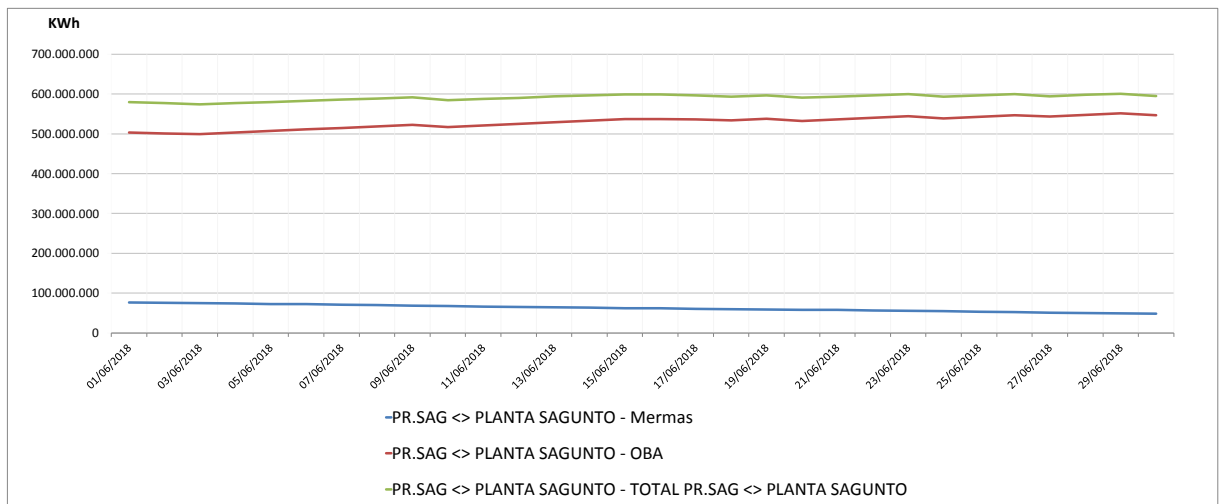
Observaciones:

Cuentas GTS en PR Sagunto: Junio 2018

Seguimiento diario provisional de existencias (d+1)

Unidad: KWh			
	Mermas	OBA	TOTAL PR.SAG <> PLANTA SAGUNTO
1-jun	76.695.216	503.171.690	579.866.906
2-jun	76.050.034	501.131.706	577.181.740
3-jun	74.874.024	499.060.650	573.934.674
4-jun	73.817.765	503.027.930	576.845.695
5-jun	72.838.554	506.991.274	579.829.828
6-jun	72.164.094	510.933.594	583.097.688
7-jun	71.059.993	514.879.210	585.939.203
8-jun	69.904.905	518.809.210	588.714.115
9-jun	68.606.429	522.749.898	591.356.327
10-jun	67.429.466	517.103.290	584.532.756
11-jun	66.348.634	520.993.802	587.342.436
12-jun	65.440.580	524.950.714	590.391.294
13-jun	64.807.937	528.901.834	593.709.771
14-jun	63.457.280	532.860.154	596.317.434
15-jun	62.329.829	536.782.698	599.112.527
16-jun	61.921.449	536.717.850	598.639.299
17-jun	60.400.555	535.845.194	596.245.749
18-jun	59.435.040	533.801.370	593.236.410
19-jun	58.557.166	537.785.930	596.343.096
20-jun	58.282.222	532.404.858	590.687.080
21-jun	57.642.244	536.005.578	593.647.822
22-jun	56.622.649	539.974.490	596.597.139
23-jun	55.770.582	543.950.314	599.720.896
24-jun	54.429.393	538.997.370	593.426.763
25-jun	53.447.703	542.934.346	596.382.049
26-jun	52.610.990	546.907.354	599.518.344
27-jun	50.867.421	543.421.738	594.289.159
28-jun	50.358.769	547.405.754	597.764.523
29-jun	49.453.502	551.393.290	600.846.792
30-jun	48.287.729	546.462.885	594.750.614

Evolución existencias cuentas GTS en PR Sagunto



Observaciones: