



Seguimiento Cuentas del GTS

Información diaria provisional (d+1)

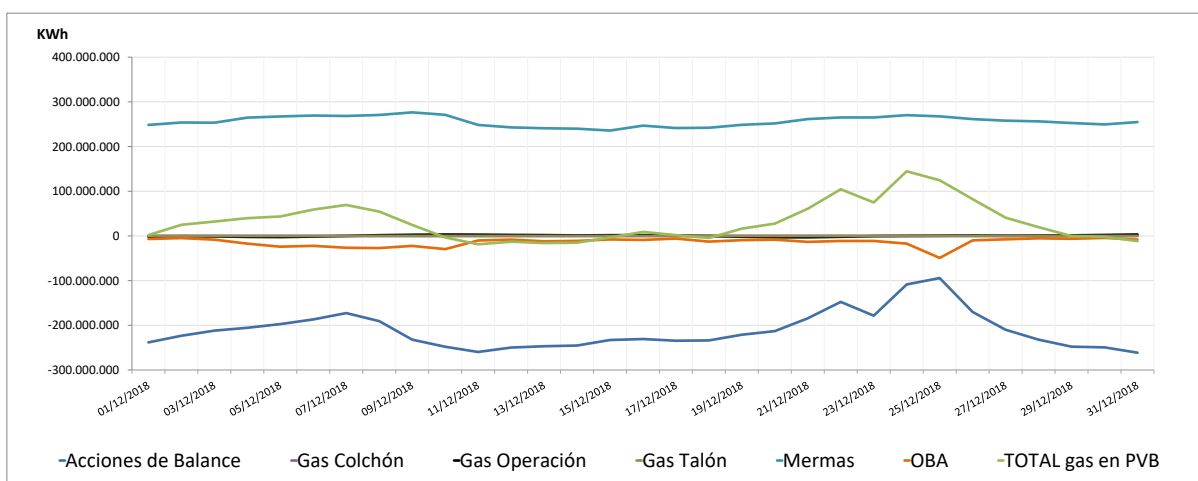
diciembre-18

02/01/2019

Seguimiento diario provisional de existencias (d+1)

Unidad:KWh							
	Acciones de Balance	Gas Colchón	Gas Operación	Gas Talón	Mermas	OBA	TOTAL gas en PVB
1-dic.	-238.184.305	0	-1.550.366	0	248.435.471	-6.853.152	1.847.648
2-dic.	-223.386.973	0	-739.698	0	253.901.570	-4.841.588	24.933.311
3-dic.	-211.917.962	0	-988.845	0	253.388.862	-8.256.981	32.225.074
4-dic.	-205.539.018	0	-2.170.236	0	264.771.540	-17.279.417	39.782.869
5-dic.	-197.303.703	0	-2.533.826	0	267.381.040	-24.061.624	43.481.887
6-dic.	-186.861.251	0	-1.379.094	0	269.421.936	-22.191.095	58.990.496
7-dic.	-172.643.985	0	-34.863	0	268.423.978	-26.446.978	69.298.152
8-dic.	-190.662.405	0	1.627.448	0	270.732.076	-27.129.739	54.567.380
9-dic.	-232.069.534	0	2.597.444	0	276.491.215	-22.336.076	24.683.049
10-dic.	-247.999.492	0	3.104.388	0	271.089.288	-29.564.947	-3.370.763
11-dic.	-259.712.193	0	2.842.296	0	248.345.999	-10.209.912	-18.733.810
12-dic.	-249.782.801	0	2.263.376	0	242.907.491	-8.257.619	-12.869.553
13-dic.	-246.841.363	0	1.866.198	0	241.009.386	-11.968.347	-15.934.126
14-dic.	-245.297.150	0	1.182.793	0	240.054.739	-11.084.695	-15.144.313
15-dic.	-232.943.312	0	1.626.449	0	235.783.733	-7.846.749	-3.379.879
16-dic.	-230.786.459	0	1.787.149	0	246.867.758	-8.887.948	8.980.500
17-dic.	-234.507.875	0	789.732	0	241.484.978	-5.906.562	1.860.273
18-dic.	-233.848.855	0	-152.380	0	242.046.205	-12.688.457	-4.643.487
19-dic.	-221.068.484	0	-1.797.464	0	248.635.238	-9.489.487	16.279.803
20-dic.	-213.003.716	0	-2.973.978	0	251.815.972	-8.324.033	27.514.245
21-dic.	-184.327.398	0	-3.113.123	0	261.581.483	-13.282.983	60.857.979
22-dic.	-147.607.399	0	-1.924.249	0	265.157.716	-11.262.536	104.363.532
23-dic.	-178.449.651	0	-464.571	0	265.103.741	-11.284.473	74.905.046
24-dic.	-108.550.136	0	124.442	0	270.323.383	-17.267.109	144.630.580
25-dic.	-94.281.829	0	463.427	0	267.623.372	-49.212.037	124.592.933
26-dic.	-170.162.565	0	876.242	0	261.472.579	-9.917.155	82.269.101
27-dic.	-209.984.773	0	470.989	0	257.960.155	-7.565.678	40.880.693
28-dic.	-232.147.728	0	724.852	0	256.377.616	-5.354.152	19.600.588
29-dic.	-247.810.330	0	1.224.512	0	252.681.207	-6.371.213	-275.824
30-dic.	-249.367.062	0	2.208.064	0	249.482.716	-4.417.737	-2.094.019
31-dic.	-261.283.607	0	3.206.012	0	254.827.716	-8.175.117	-11.424.996

Evolución existencias cuentas GTS en PVB



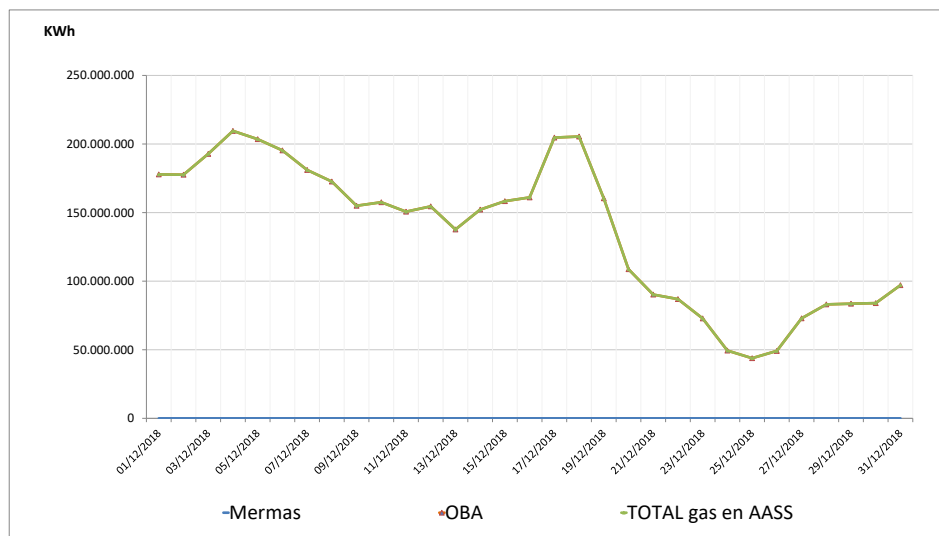
Observaciones:

Cuentas GTS en AASS: Diciembre 2018

Seguimiento diario provisional de existencias (d+1)

Unidad:KWh	Mermas	OBA	TOTAL gas en AASS
1-dic.	0	177.820.479	177.820.479
2-dic.	0	177.622.507	177.622.507
3-dic.	0	192.801.077	192.801.077
4-dic.	0	209.548.164	209.548.164
5-dic.	0	203.533.772	203.533.772
6-dic.	0	195.334.454	195.334.454
7-dic.	0	181.068.708	181.068.708
8-dic.	0	172.642.021	172.642.021
9-dic.	0	154.990.224	154.990.224
10-dic.	0	157.527.385	157.527.385
11-dic.	0	150.663.727	150.663.727
12-dic.	0	154.518.727	154.518.727
13-dic.	0	137.683.702	137.683.702
14-dic.	0	152.155.370	152.155.370
15-dic.	0	158.321.258	158.321.258
16-dic.	0	161.067.247	161.067.247
17-dic.	0	204.684.168	204.684.168
18-dic.	0	205.443.221	205.443.221
19-dic.	0	160.396.845	160.396.845
20-dic.	0	108.719.874	108.719.874
21-dic.	0	90.229.330	90.229.330
22-dic.	0	86.921.161	86.921.161
23-dic.	0	72.819.879	72.819.879
24-dic.	0	49.399.431	49.399.431
25-dic.	0	43.839.234	43.839.234
26-dic.	0	49.128.293	49.128.293
27-dic.	0	72.892.628	72.892.628
28-dic.	0	83.042.261	83.042.261
29-dic.	0	83.592.113	83.592.113
30-dic.	0	83.988.704	83.988.704
31-dic.	0	97.079.692	97.079.692

Evolución existencias cuentas GTS en AASS



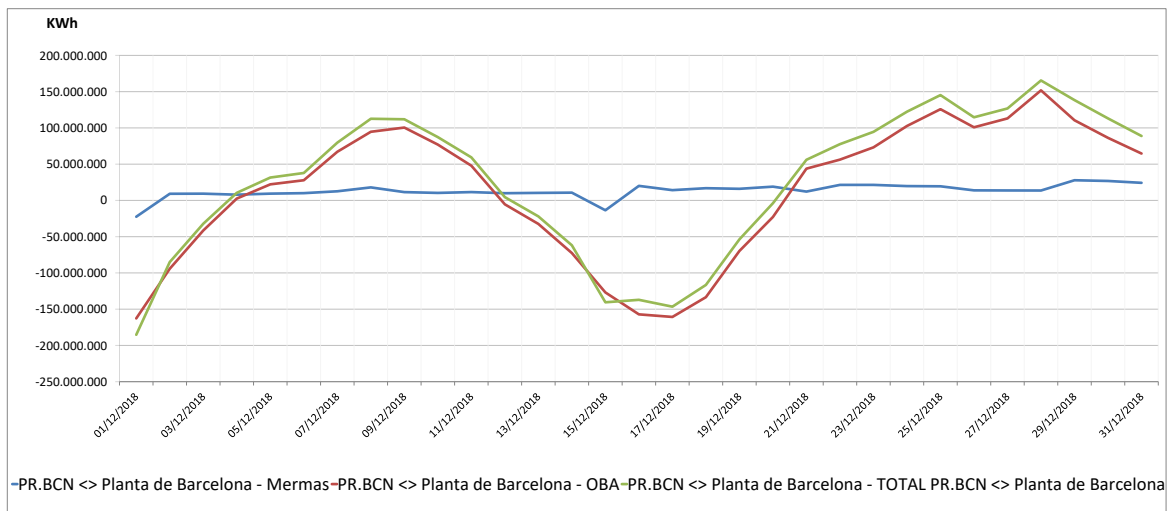
Observaciones :

Cuentas GTS en PR Barcelona: Diciembre 2018

Seguimiento diario provisional de existencias (d+1)

Unidad: KWh			
	Mermas	OBA	TOTAL PR.BCN <> Planta de Barcelona
1-dic.	-22.519.209	-162.758.413	-185.277.622
2-dic.	9.174.371	-94.195.202	-85.020.831
3-dic.	9.291.504	-41.496.645	-32.205.141
4-dic.	7.887.231	2.569.892	10.457.123
5-dic.	9.334.617	22.158.606	31.493.223
6-dic.	10.038.318	27.806.218	37.844.536
7-dic.	12.583.222	67.052.032	79.635.254
8-dic.	17.961.134	94.660.692	112.621.826
9-dic.	11.446.829	100.461.066	111.907.895
10-dic.	10.305.729	77.005.599	87.311.328
11-dic.	11.486.454	47.847.693	59.334.147
12-dic.	9.915.575	-5.388.415	4.527.160
13-dic.	10.361.373	-32.402.816	-22.041.443
14-dic.	10.726.114	-72.619.719	-61.893.605
15-dic.	-13.580.980	-126.921.477	-140.502.457
16-dic.	20.053.849	-157.172.039	-137.118.190
17-dic.	14.150.928	-160.729.868	-146.578.940
18-dic.	16.881.036	-133.457.367	-116.576.331
19-dic.	16.035.415	-69.746.485	-53.711.070
20-dic.	18.965.872	-22.817.368	-3.851.496
21-dic.	12.189.563	43.817.770	56.007.333
22-dic.	21.390.656	56.227.366	77.618.022
23-dic.	21.390.719	73.203.228	94.593.947
24-dic.	19.752.480	102.625.949	122.378.429
25-dic.	19.480.317	125.802.389	145.282.706
26-dic.	13.842.306	100.808.024	114.650.330
27-dic.	13.729.772	113.113.161	126.842.933
28-dic.	13.650.338	151.786.842	165.437.180
29-dic.	27.797.171	110.541.642	138.338.813
30-dic.	26.834.742	86.239.004	113.073.746
31-dic.	24.217.180	64.635.578	88.852.758

Evolución existencias cuentas GTS en PR Barcelona

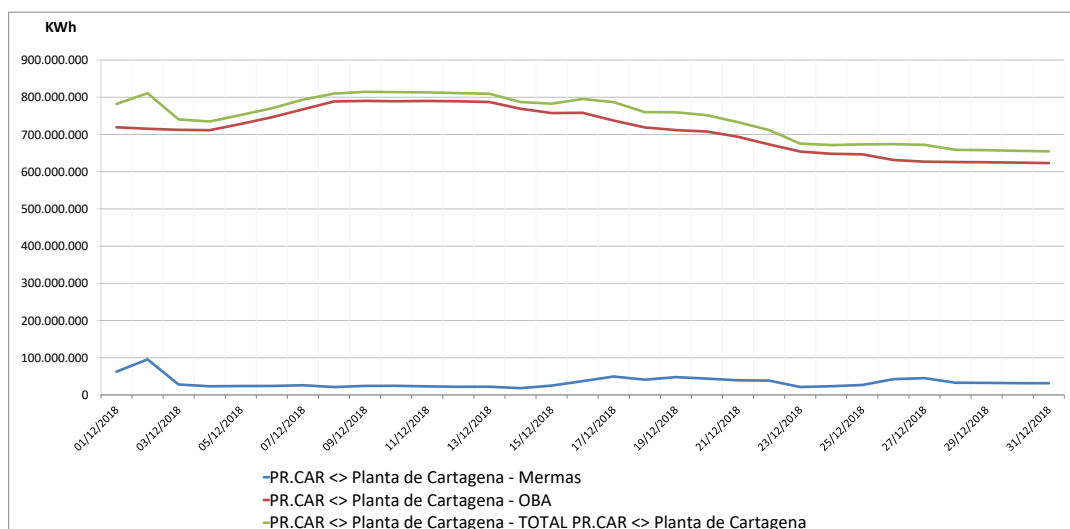


Observaciones:

Seguimiento diario provisional de existencias (d+1)

Unidad: KWh			
	Mermas	OBA	TOTAL PR.CAR <> Planta de Cartagena
1-dic.	62.627.830	719.368.447	781.996.277
2-dic.	95.559.275	715.306.812	810.866.087
3-dic.	28.103.531	712.377.838	740.481.369
4-dic.	23.311.462	711.580.061	734.891.523
5-dic.	24.082.397	728.227.345	752.309.742
6-dic.	24.161.550	746.262.922	770.424.472
7-dic.	26.121.382	767.550.823	793.672.205
8-dic.	21.223.861	788.669.813	809.893.674
9-dic.	24.432.323	790.183.818	814.616.141
10-dic.	24.513.328	789.273.303	813.786.631
11-dic.	23.102.464	789.989.981	813.092.445
12-dic.	21.936.167	789.166.332	811.102.499
13-dic.	22.166.161	787.148.382	809.314.543
14-dic.	18.220.956	769.100.503	787.321.459
15-dic.	25.130.505	757.585.844	782.716.349
16-dic.	37.234.898	758.210.053	795.444.951
17-dic.	49.508.541	737.369.976	786.878.517
18-dic.	41.065.373	718.926.465	759.991.838
19-dic.	47.907.296	711.701.756	759.609.052
20-dic.	43.906.096	707.851.967	751.758.063
21-dic.	39.394.802	693.697.388	733.092.190
22-dic.	38.568.907	673.244.845	711.813.752
23-dic.	21.407.005	654.064.317	675.471.322
24-dic.	23.485.980	648.061.072	671.547.052
25-dic.	26.786.619	646.695.504	673.482.123
26-dic.	42.495.410	631.483.581	673.978.991
27-dic.	45.237.528	626.956.491	672.194.019
28-dic.	32.879.046	625.886.331	658.765.377
29-dic.	32.545.398	625.370.019	657.915.417
30-dic.	31.700.121	624.330.270	656.030.391
31-dic.	31.526.390	623.129.240	654.655.630

Evolución existencias cuentas GTS en PR Cartagena



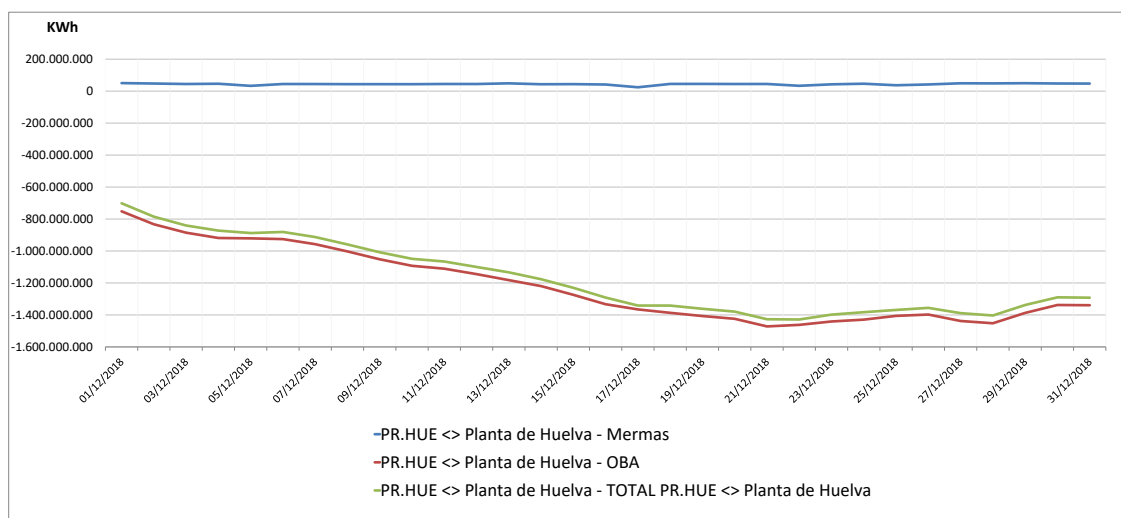
Observaciones:

Cuentas GTS en PR Huelva: Diciembre 2018

Seguimiento diario provisional de existencias (d+1)

Unidad: KWh			
	Mermas	OBA	TOTAL PR.HUE <> Planta de Huelva
1-dic.	50.382.252	-751.697.478	-701.315.226
2-dic.	47.650.565	-832.821.919	-785.171.354
3-dic.	44.809.727	-885.334.941	-840.525.214
4-dic.	46.247.563	-918.501.937	-872.254.374
5-dic.	33.168.660	-920.994.440	-887.825.780
6-dic.	44.648.258	-925.553.197	-880.904.939
7-dic.	44.454.582	-957.137.050	-912.682.468
8-dic.	43.708.405	-1.002.648.964	-958.940.559
9-dic.	43.718.542	-1.051.854.739	-1.008.136.197
10-dic.	43.552.900	-1.092.508.859	-1.048.955.959
11-dic.	44.977.334	-1.110.683.018	-1.065.705.684
12-dic.	44.793.334	-1.144.594.921	-1.099.801.587
13-dic.	48.935.734	-1.182.327.412	-1.133.391.678
14-dic.	43.134.663	-1.219.613.146	-1.176.478.483
15-dic.	43.988.619	-1.274.256.420	-1.230.267.801
16-dic.	41.577.329	-1.333.078.377	-1.291.501.048
17-dic.	24.096.132	-1.365.455.701	-1.341.359.569
18-dic.	45.188.907	-1.386.670.164	-1.341.481.257
19-dic.	45.313.433	-1.406.737.082	-1.361.423.649
20-dic.	44.667.635	-1.424.069.527	-1.379.401.892
21-dic.	44.907.684	-1.471.699.225	-1.426.791.541
22-dic.	33.465.561	-1.461.964.168	-1.428.498.607
23-dic.	42.776.010	-1.440.692.023	-1.397.916.013
24-dic.	46.499.273	-1.429.277.370	-1.382.778.097
25-dic.	37.026.665	-1.405.666.799	-1.368.640.134
26-dic.	41.933.647	-1.397.599.170	-1.355.665.523
27-dic.	49.078.243	-1.437.722.513	-1.388.644.270
28-dic.	48.511.407	-1.452.068.042	-1.403.556.635
29-dic.	49.747.773	-1.387.341.043	-1.337.593.270
30-dic.	47.901.366	-1.337.635.613	-1.289.734.247
31-dic.	47.421.780	-1.339.355.157	-1.291.933.377

Evolución existencias cuentas GTS en PR Huelva



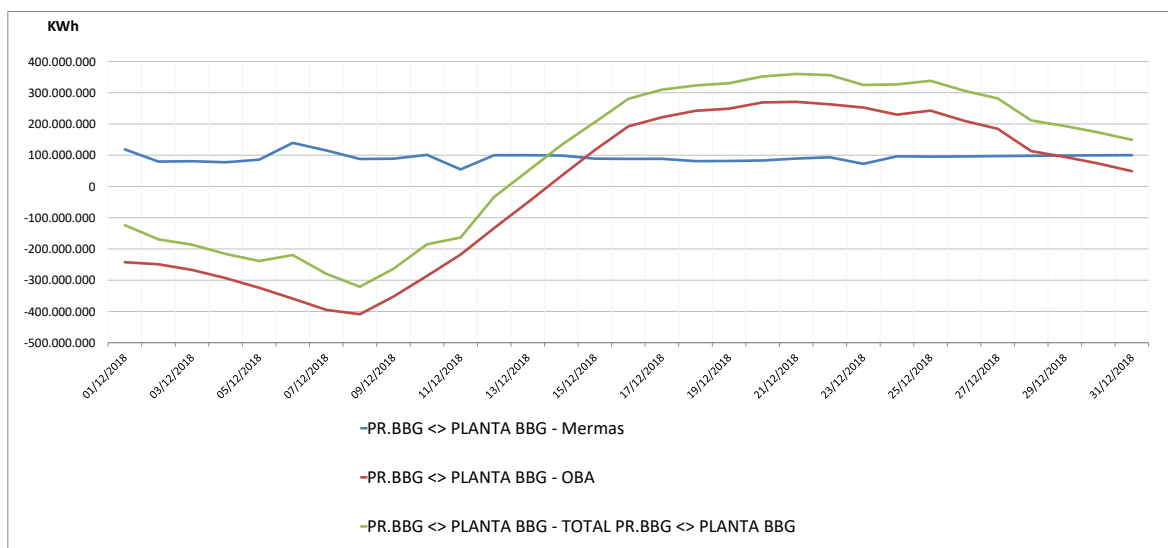
Observaciones:

Cuentas GTS en PR Bilbao: Diciembre 2018

Seguimiento diario provisional de existencias (d+1)

Unidad: KWh			
	Mermas	OBA	TOTAL PR.BBG <> PLANTA BBG
1-dic.	118.534.188	-242.462.401	-123.928.213
2-dic.	79.617.449	-248.963.045	-169.345.596
3-dic.	80.728.219	-267.100.955	-186.372.736
4-dic.	77.409.841	-293.260.042	-215.850.201
5-dic.	85.701.273	-324.236.030	-238.534.757
6-dic.	139.426.837	-358.879.853	-219.453.016
7-dic.	115.334.616	-394.917.547	-279.582.931
8-dic.	87.894.323	-408.925.612	-321.031.289
9-dic.	88.897.280	-352.419.253	-263.521.973
10-dic.	101.153.553	-286.309.952	-185.156.399
11-dic.	54.659.608	-218.113.482	-163.453.874
12-dic.	99.884.061	-133.284.188	-33.400.127
13-dic.	100.045.526	-51.078.817	48.966.709
14-dic.	99.038.973	33.343.139	132.382.112
15-dic.	89.049.689	116.438.954	205.488.643
16-dic.	88.187.417	192.390.675	280.578.092
17-dic.	88.452.195	221.297.065	309.749.260
18-dic.	80.941.280	242.208.265	323.149.545
19-dic.	81.499.559	248.962.083	330.461.642
20-dic.	83.083.301	268.950.440	352.033.741
21-dic.	89.292.586	270.705.112	359.997.698
22-dic.	93.319.254	262.813.004	356.132.258
23-dic.	72.334.997	252.499.469	324.834.466
24-dic.	96.576.979	229.915.487	326.492.466
25-dic.	95.440.939	242.678.720	338.119.659
26-dic.	96.152.365	210.115.163	306.267.528
27-dic.	97.238.935	184.543.753	281.782.688
28-dic.	98.165.005	113.155.248	211.320.253
29-dic.	98.857.753	94.620.171	193.477.924
30-dic.	99.595.950	73.463.960	173.059.910
31-dic.	100.236.979	48.925.376	149.162.355

Evolución existencias cuentas GTS en PR Bilbao

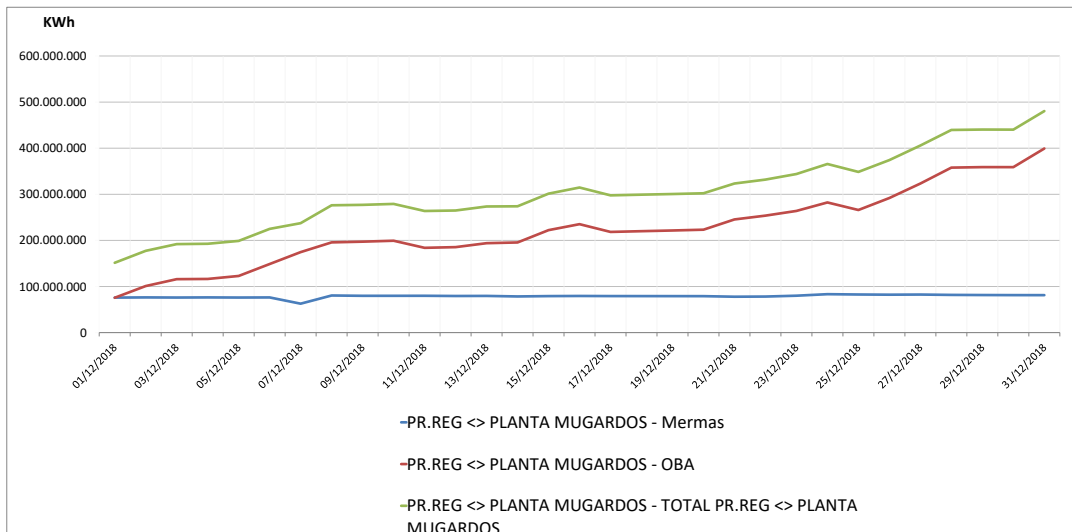


Observaciones:

Seguimiento diario provisional de existencias (d+1)

Unidad: KWh			
	Mermas	OBA	TOTAL PR.REG <> PLANTA MUGARDOS
1-dic.	75.890.086	75.567.189	151.457.275
2-dic.	76.325.051	101.014.037	177.339.088
3-dic.	76.022.663	115.885.013	191.907.676
4-dic.	76.299.302	116.383.125	192.682.427
5-dic.	76.076.171	122.824.533	198.900.704
6-dic.	76.242.716	148.717.845	224.960.561
7-dic.	62.707.438	174.607.061	237.314.499
8-dic.	80.471.346	195.716.245	276.187.591
9-dic.	79.817.662	197.299.797	277.117.459
10-dic.	79.816.570	199.305.237	279.121.807
11-dic.	79.890.780	183.886.293	263.777.073
12-dic.	79.393.038	185.424.789	264.817.827
13-dic.	79.616.977	193.963.349	273.580.326
14-dic.	78.414.354	195.555.093	273.969.447
15-dic.	79.149.618	222.263.509	301.413.127
16-dic.	79.466.020	235.217.557	314.683.577
17-dic.	79.279.700	218.381.397	297.661.097
18-dic.	79.166.965	220.010.005	299.176.970
19-dic.	79.104.086	221.494.416	300.598.502
20-dic.	79.006.677	223.215.019	302.221.696
21-dic.	77.875.188	245.488.294	323.363.482
22-dic.	78.232.336	253.695.446	331.927.782
23-dic.	80.038.433	263.918.342	343.956.775
24-dic.	83.331.785	282.365.126	365.696.911
25-dic.	82.664.453	265.914.086	348.578.539
26-dic.	82.241.124	291.991.718	374.232.842
27-dic.	82.534.255	323.336.806	405.871.061
28-dic.	81.752.267	357.852.198	439.604.465
29-dic.	81.486.734	358.972.710	440.459.444
30-dic.	81.328.063	358.939.878	440.267.941
31-dic.	81.242.879	399.283.878	480.526.757

Evolución existencias cuentas GTS en PR MugarDOS



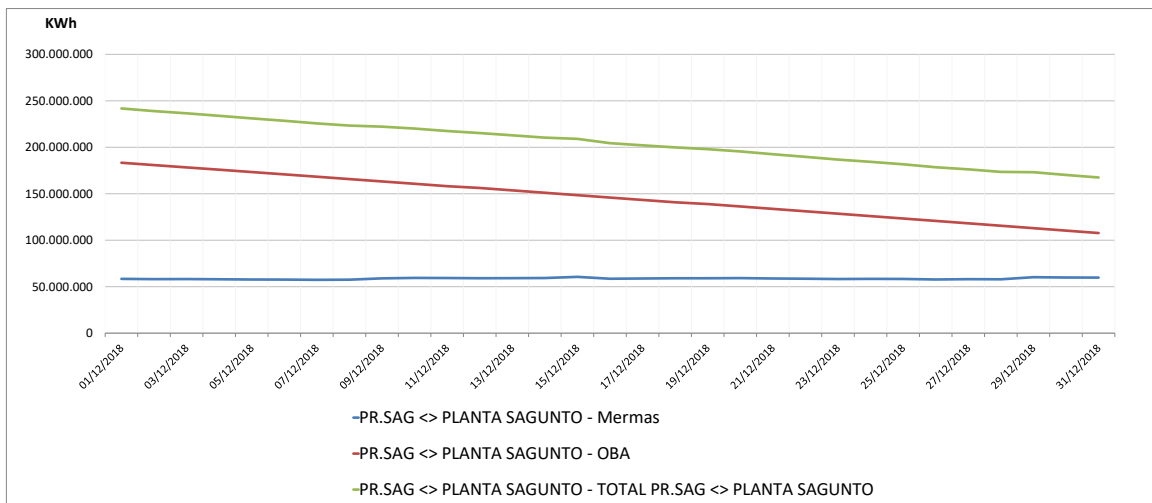
Observaciones:

Cuentas GTS en PR Sagunto: Diciembre 2018

Seguimiento diario provisional de existencias (d+1)

Unidad: KWh			
	Mermas	OBA	TOTAL PR.SAG <> PLANTA SAGUNTO
1-dic.	58.412.097	183.378.160	241.790.257
2-dic.	58.125.608	180.844.976	238.970.584
3-dic.	58.214.505	178.357.680	236.572.185
4-dic.	57.978.987	175.877.168	233.856.155
5-dic.	57.717.669	173.380.592	231.098.261
6-dic.	57.663.813	170.866.032	228.529.845
7-dic.	57.366.766	168.335.280	225.702.046
8-dic.	57.548.050	165.800.752	223.348.802
9-dic.	58.960.873	163.268.336	222.229.209
10-dic.	59.434.046	160.730.928	220.164.974
11-dic.	59.343.042	158.146.608	217.489.650
12-dic.	59.088.747	156.241.968	215.330.715
13-dic.	59.211.365	153.659.440	212.870.805
14-dic.	59.338.440	151.069.360	210.407.800
15-dic.	60.576.348	148.477.040	209.053.388
16-dic.	58.552.885	145.901.232	204.454.117
17-dic.	58.819.384	143.329.712	202.149.096
18-dic.	59.062.981	140.828.080	199.891.061
19-dic.	59.063.263	138.943.216	198.006.479
20-dic.	59.221.813	136.339.376	195.561.189
21-dic.	58.809.842	133.734.000	192.543.842
22-dic.	58.569.316	131.155.824	189.725.140
23-dic.	58.227.442	128.563.760	186.791.202
24-dic.	58.399.268	125.965.488	184.364.756
25-dic.	58.352.532	123.366.896	181.719.428
26-dic.	57.761.150	120.784.496	178.545.646
27-dic.	58.079.299	118.186.224	176.265.523
28-dic.	57.967.191	115.595.760	173.562.951
29-dic.	60.242.902	112.968.880	173.211.782
30-dic.	59.876.487	110.352.496	170.228.983
31-dic.	59.777.755	107.735.890	167.513.645

Evolución existencias cuentas GTS en PR Sagunto



Observaciones: